



COMMUNITY SAFETY STATION REVITALIZATION – PHASE 1

JASON RADLEY
PROJECT MANAGER

Enhancing Public Safety Through Strategic Facility Investment by repair, upgrade and modernization to our Community Safety Stations

COMMUNITY SAFETY STATION REVITALIZATION

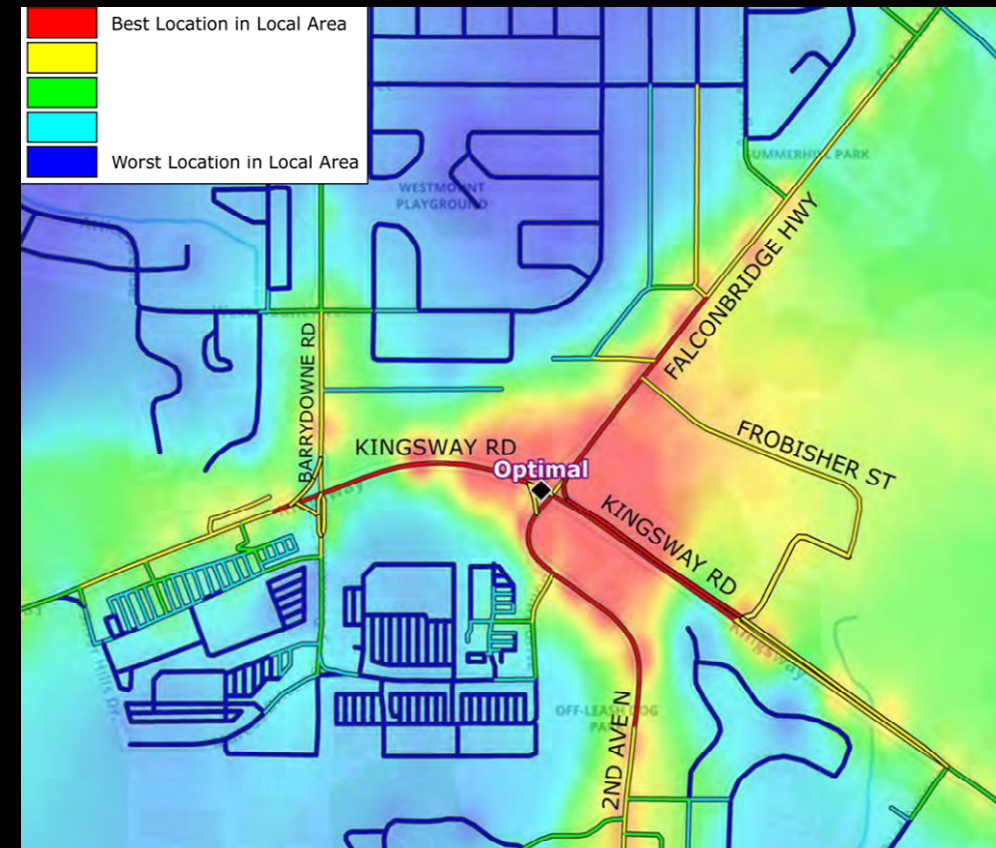
BACKGROUND

- As part of an Asset Management study, BCA reports indicate that majority of existing Emergency Services facilities are beyond their lifecycle age and in Poor to Fair condition
- In 2022, CGS Staff were directed to report on the fiscal and operational sustainability of the City's 24 fire and paramedic response stations throughout the community
- Two separate consultant reports provide the basis of support and Council Resolution to proceed with Phase 1



STATION LOCATION REVIEW

- Operational Research & Health Ltd (ORH) provided a comprehensive study which evaluated 5 years of response call data
- Collection of information identified specific response challenges and recommendations for optimal station locations, namely
 - MINNOW LAKE STATION
 - GARSON STATION





OPERATIONAL SUSTAINABILITY REVIEW

- Masri O Architects Ltd prepared an extensive report which reviewed the condition and efficiencies of all 24 stations within the community
- Outlined a path of optimization and modernization of all Emergency Safety Stations, along with prioritization
- PHASE 1:
 - Renovation and Additions to **VAN HORNE, LONG LAKE & VAL THERESE** Stations
 - NEW Construction in ideal locations of **MINNOW LAKE & GARSON** Stations



ENGAGED CONSULTANT

salterpilon

01

In Q4 of 2024, Salter Pilon Architecture, was awarded as the successful Consultant to the project RFP

02

Since, Salter Pilon has been completing its' Site Due Diligence and Location Recommendations as well as Schematic Designs of all 5 stations

03

Currently, as Site Selection and Design Developments progress, Project schedules forecast that site clearing, alterations and servicing efforts of Minnow Lake, Garson and Val Therese locations may commence in Q3 of 2025