

**LEGEND**

- ROAD (CGS)
- LOT LINE (CGS)
- WATERCOURSE & WATERBODY (CGS)
- DITCH (CGS)
- MAJOR CONTOUR (10m)
- MINOR CONTOUR (2m)
- TRUNK STORM SEWER: NO SURCHARGING (MODEL)
- TRUNK STORM SEWER: SURCHARGING (MODEL)
- TRUNK STORM SEWER: FLOODING (MODEL)
- TRUNK STORM SEWER SUBCATCHMENT AREA



City of Greater Sudbury

Amec Foster Wheeler Environment & Infrastructure

131 Fielding Road  
Lively, Ontario  
P3Y 1L7  
705-682-2632



DWN BY:

KMR

CHK'D BY:

MDOG

SCALE:

1:15,000

PROJECT

Junction Creek Subwatershed Study  
City of Greater Sudbury, Ontario

TITLE

Trunk Storm Sewer System 5yr Performance - Garson

DATE

Dec. 2018

PROJECT No.

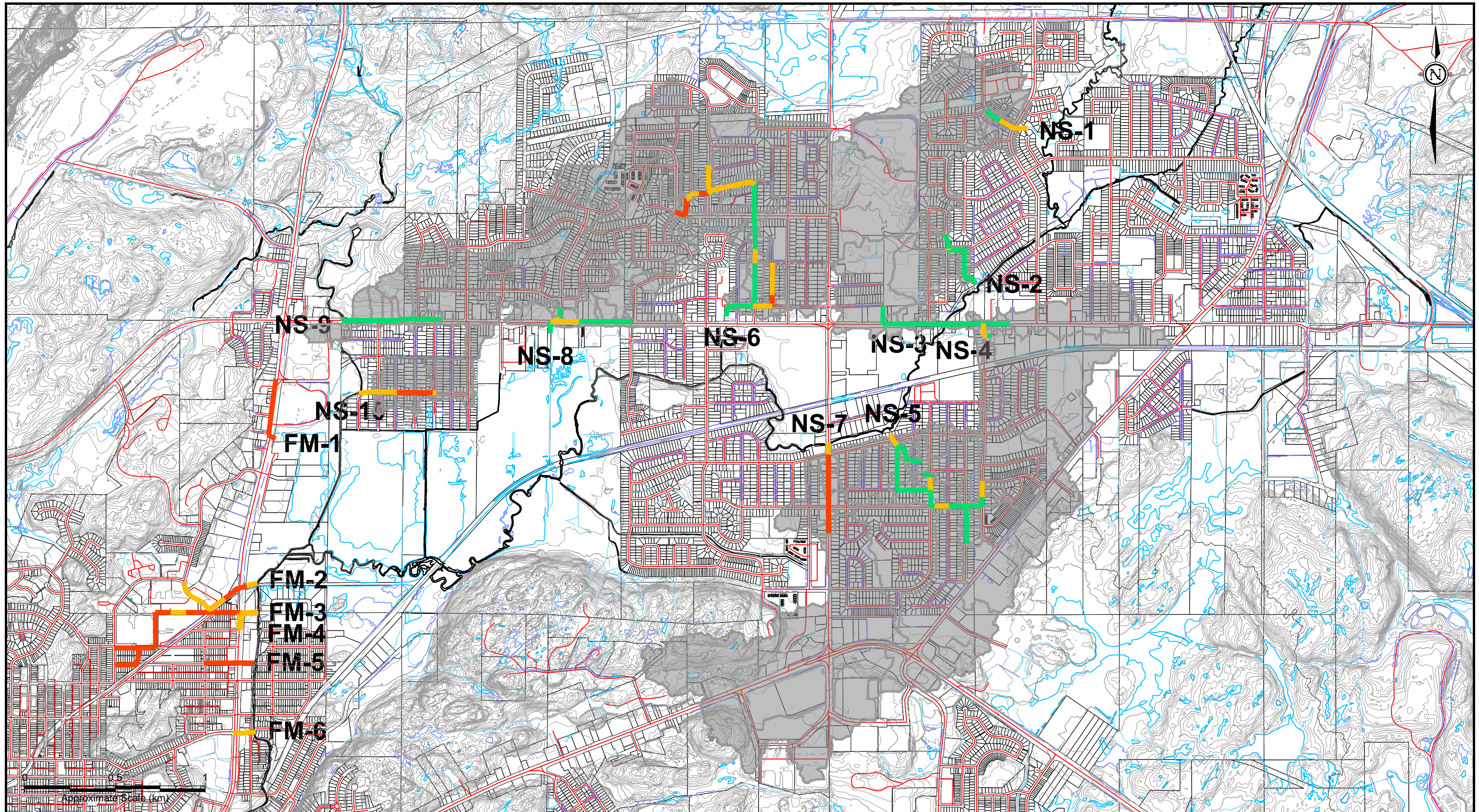
TY161021

REV. No.

1

FIGURE No.

C9.1



LEGEND	
	ROAD (CGS)
	LOT LINE (CGS)
	WATERCOURSE & WATERBODY (CGS)
	DITCH (CGS)
	MAJOR CONTOUR (10m)
	MINOR CONTOUR (2m)
	TRUNK STORM SEWER: NO SURCHARGING (MODEL)
	TRUNK STORM SEWER: SURCHARGING (MODEL)
	TRUNK STORM SEWER: FLOODING (MODEL)
	TRUNK STORM SEWER SUBCATCHMENT AREA

City of Greater Sudbury

---

Wood Environment & Infrastructure Solutions
   
 131 Fielding Road
   
 Lively, Ontario
   
 P3Y 1L7
   
 705-682-2632

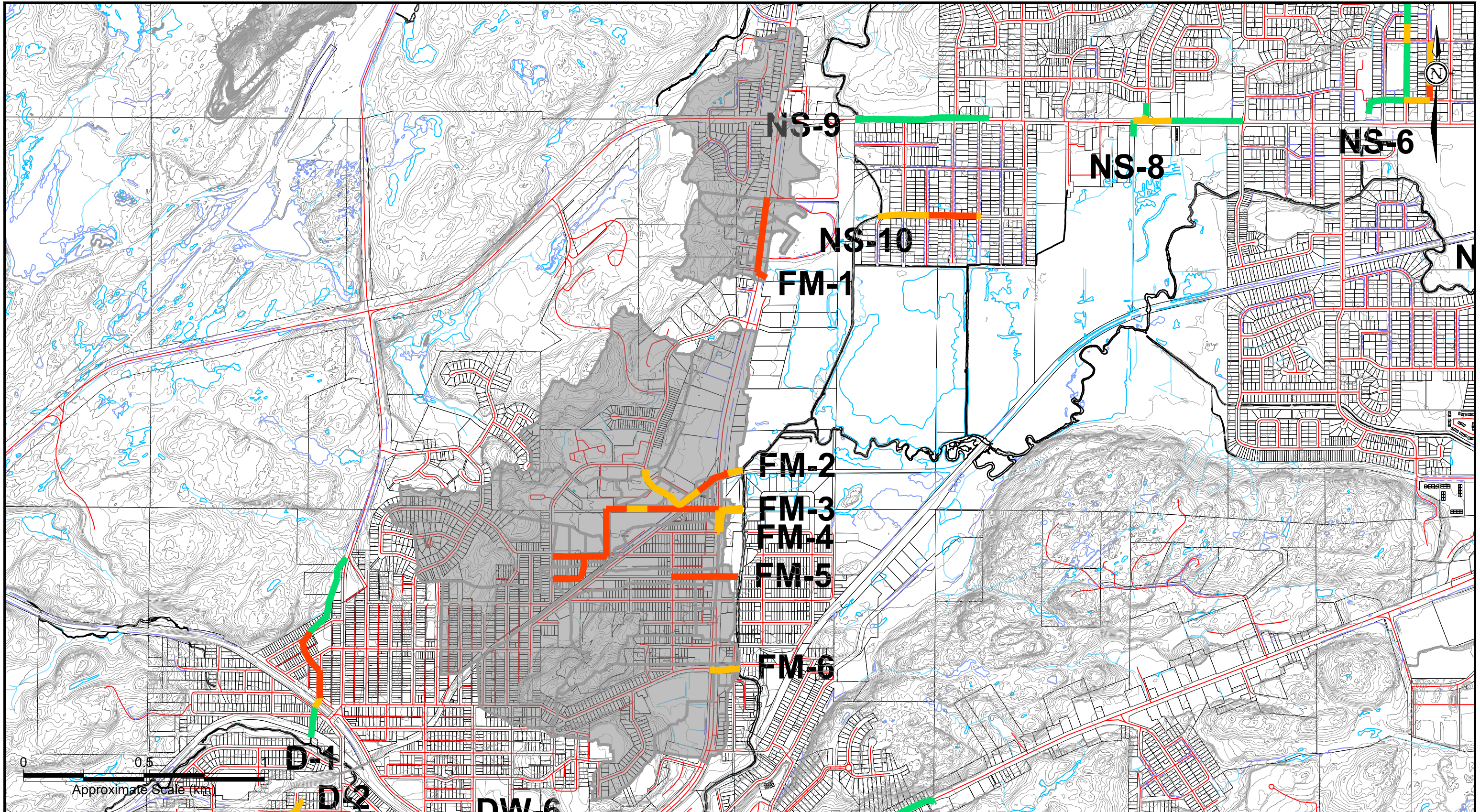
DWN BY: KMR
   
 CHK'D BY: MDOG
   
 SCALE: 1:20,000

PROJECT: Junction Creek Subwatershed Study
   
 City of Greater Sudbury, Ontario

---

TITLE: Trunk Storm Sewer System 5yr Performance - New Sudbury

DATE	Dec. 2018
PROJECT No.	TY161021
REV. No.	1
FIGURE No.	C9.2



**LEGEND**

- ROAD (CGS)
- LOT LINE (CGS)
- WATERCOURSE & WATERBODY (CGS)
- DITCH (CGS)
- MAJOR CONTOUR (10m)
- MINOR CONTOUR (2m)
- TRUNK STORM SEWER: NO SURCHARGING (MODEL)
- TRUNK STORM SEWER: SURCHARGING (MODEL)
- TRUNK STORM SEWER: FLOODING (MODEL)
- TRUNK STORM SEWER SUBCATCHMENT AREA



City of Greater Sudbury

Amec Foster Wheeler Environment & Infrastructure

131 Fielding Road  
Lively, Ontario  
P3Y 1L7  
705-682-2632



DWN BY:

KMR

CHK'D BY:

MDOG

SCALE:

1:15,000

PROJECT

Junction Creek Subwatershed Study  
City of Greater Sudbury, Ontario

TITLE

Trunk Storm Sewer System 5yr Performance - Flour Mill

DATE

Dec. 2018

PROJECT No.

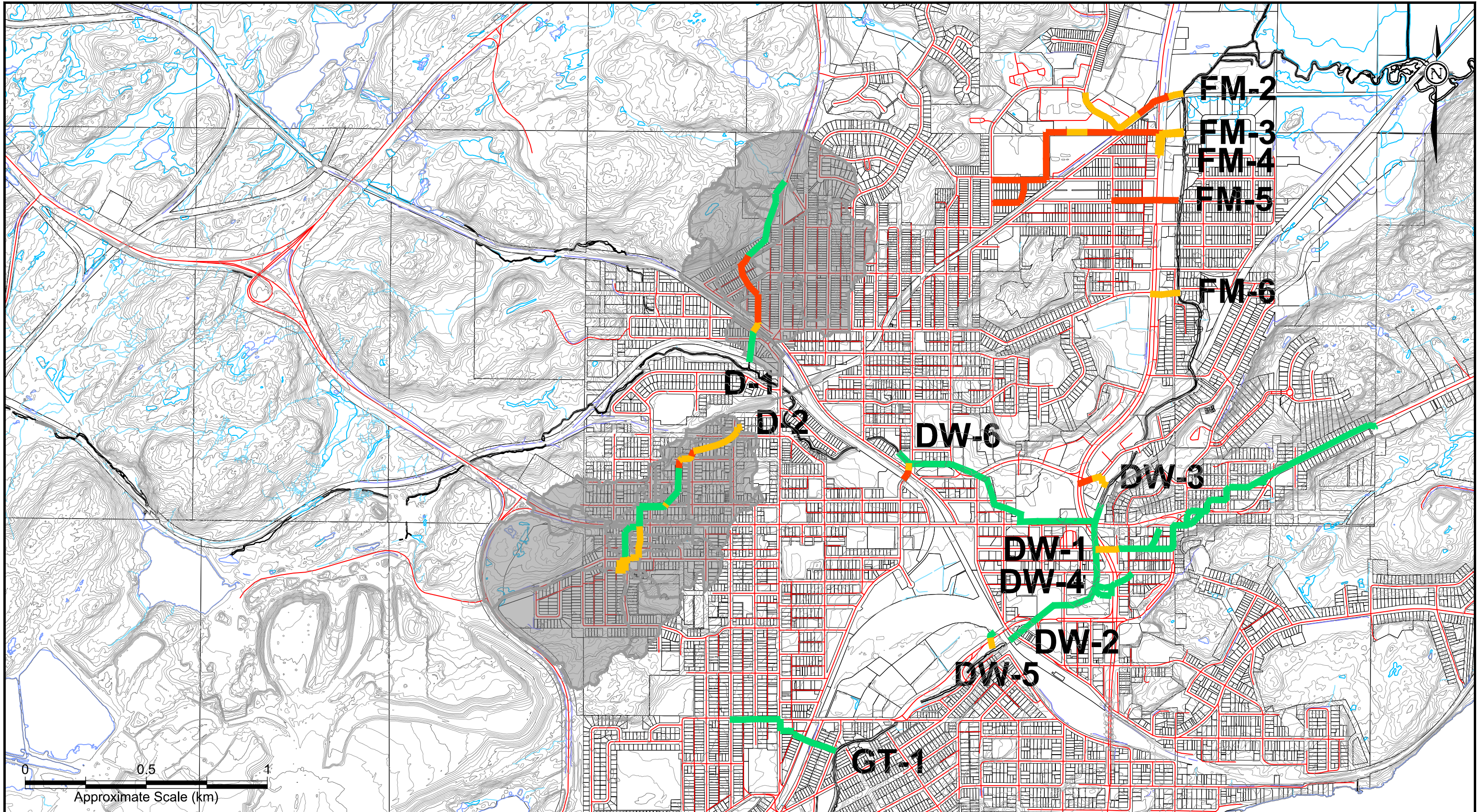
TY161021

REV. No.

1

FIGURE No.

C9.3



**LEGEND**

- ROAD (CGS)
- LOT LINE (CGS)
- WATERCOURSE & WATERBODY (CGS)
- DITCH (CGS)
- MAJOR CONTOUR (10m)
- MINOR CONTOUR (2m)
- TRUNK STORM SEWER: NO SURCHARGING (MODEL)
- TRUNK STORM SEWER: SURCHARGING (MODEL)
- TRUNK STORM SEWER: FLOODING (MODEL)
- TRUNK STORM SEWER SUBCATCHMENT AREA



City of Greater Sudbury

Amec Foster Wheeler Environment & Infrastructure

131 Fielding Road  
Lively, Ontario  
P3Y 1L7  
705-682-2632



DWN BY:  
KMR

CHK'D BY:  
MDOG

SCALE:  
1:15,000

PROJECT

Junction Creek Subwatershed Study  
City of Greater Sudbury, Ontario

TITLE

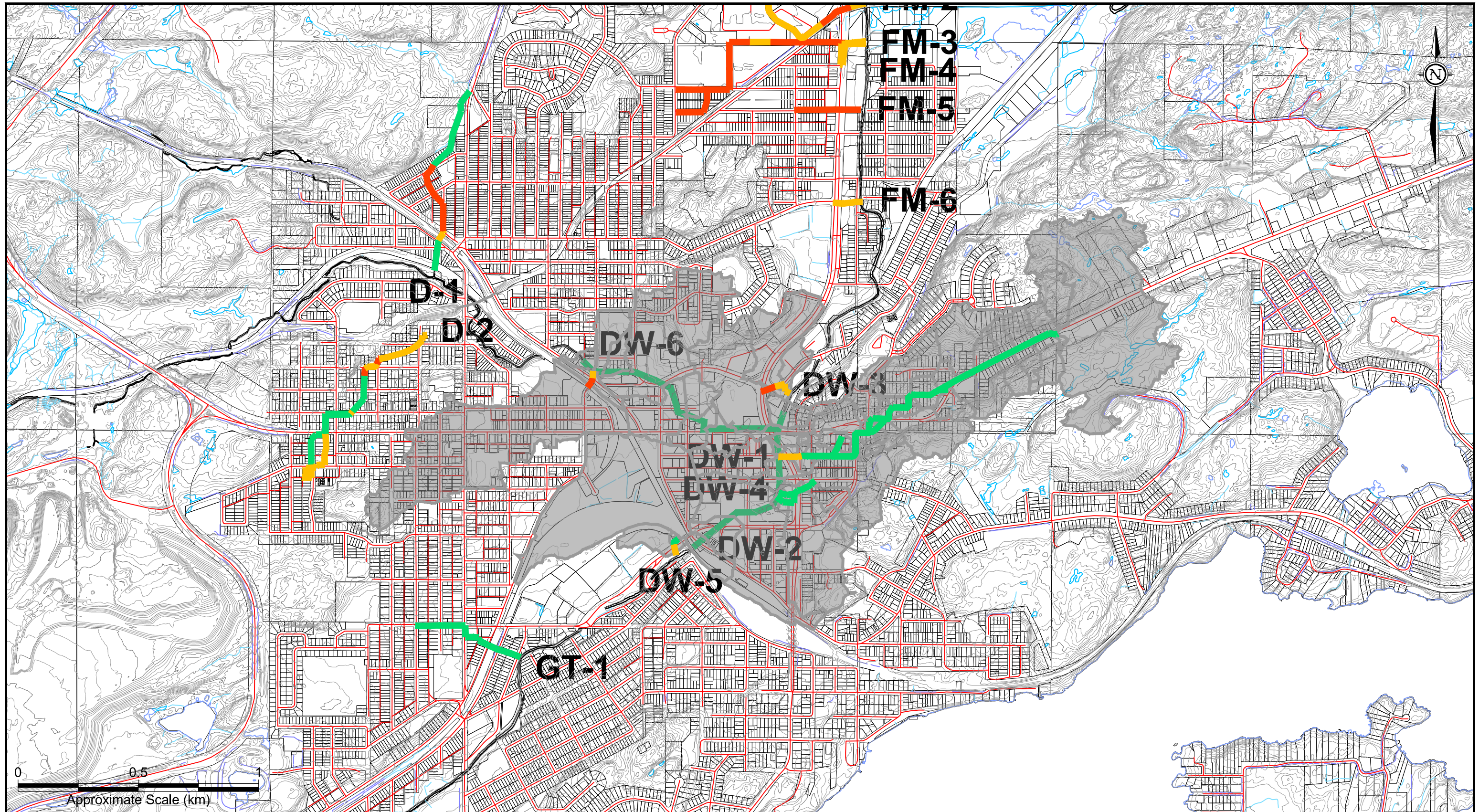
Trunk Storm Sewer System 5yr Performance - Donovan

DATE  
Dec. 2018

PROJECT No.  
TY161021


REV. No.  
1

FIGURE No.  
C9.4



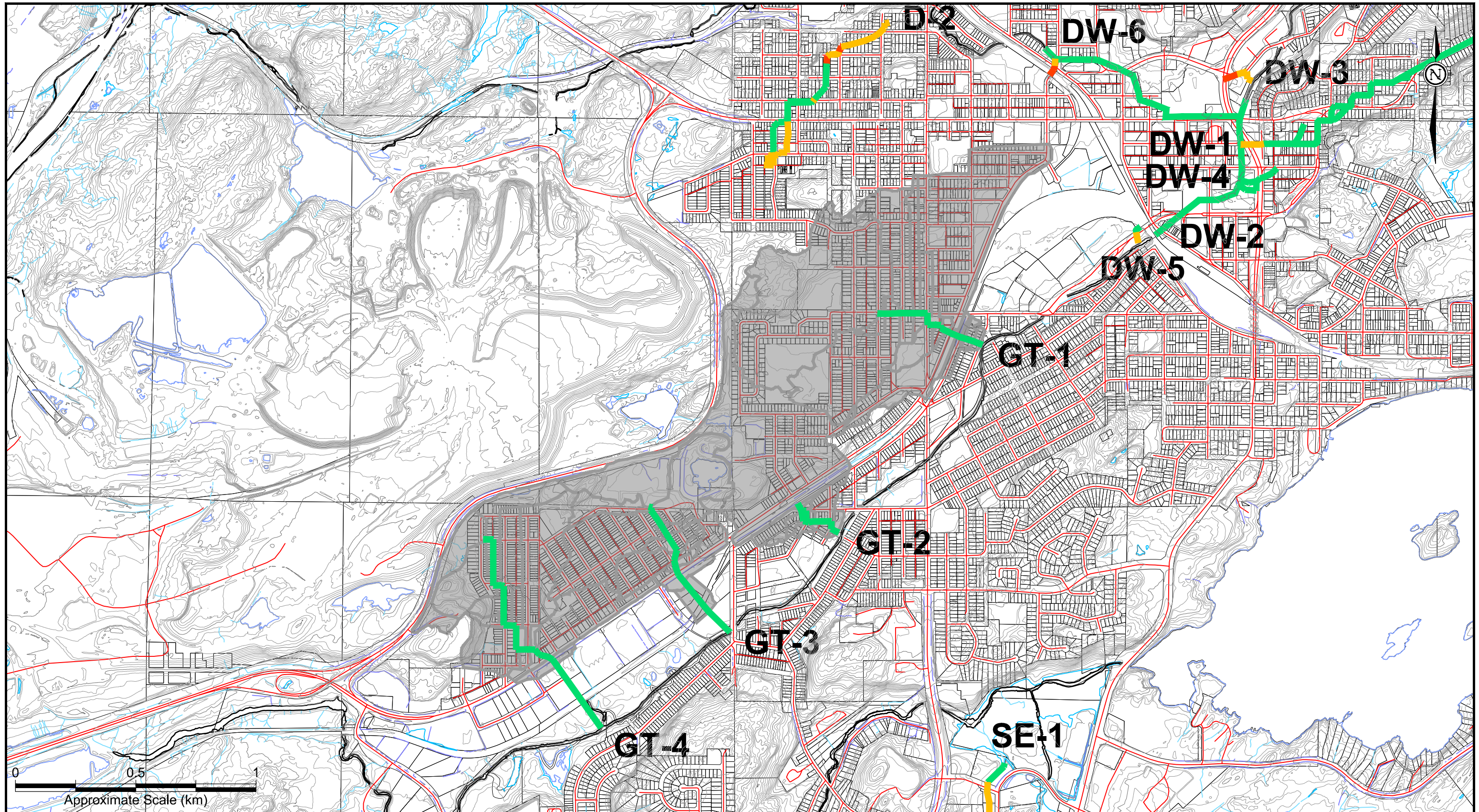
LEGEND	
	ROAD (CGS)
	LOT LINE (CGS)
	WATERCOURSE & WATERBODY (CGS)
	DITCH (CGS)
	MAJOR CONTOUR (10m)
	MINOR CONTOUR (2m)
	TRUNK STORM SEWER: NO SURCHARGING (MODEL)
	TRUNK STORM SEWER: SURCHARGING (MODEL)
	TRUNK STORM SEWER: FLOODING (MODEL)
	TRUNK STORM SEWER SUBCATCHMENT AREA


**City of Greater Sudbury**  
 Amec Foster Wheeler Environment & Infrastructure  
 131 Fielding Road  
 Lively, Ontario  
 P3Y 1L7  
 705-682-2632

DWN BY: KMR  
 CHK'D BY: MDOG  
 SCALE: 1:15,000  



PROJECT: Junction Creek Subwatershed Study  
 City of Greater Sudbury, Ontario  
 TITLE: Trunk Storm Sewer System 5yr Performance - South End

DATE	Dec. 2018
PROJECT No.	TY161021
REV. No.	1
FIGURE No.	C9.5



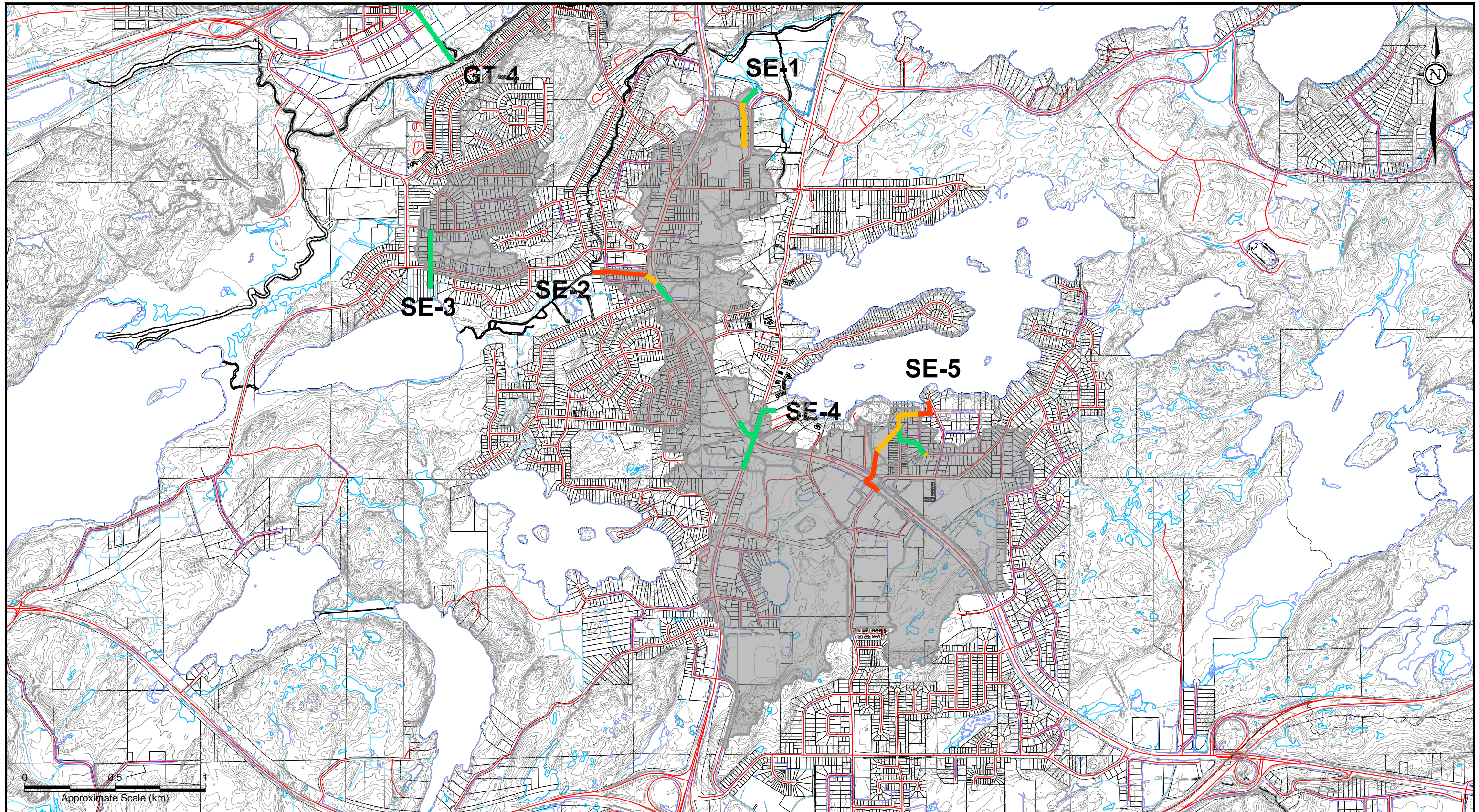
LEGEND	
	ROAD (CGS)
	LOT LINE (CGS)
	WATERCOURSE & WATERBODY (CGS)
	DITCH (CGS)
	MAJOR CONTOUR (10m)
	MINOR CONTOUR (2m)
	TRUNK STORM SEWER: NO SURCHARGING (MODEL)
	TRUNK STORM SEWER: SURCHARGING (MODEL)
	TRUNK STORM SEWER: FLOODING (MODEL)
	TRUNK STORM SEWER SUBCATCHMENT AREA


**City of Greater Sudbury**  
 Amec Foster Wheeler Environment & Infrastructure  
 131 Fielding Road  
 Lively, Ontario  
 P3Y 1L7  
 705-682-2632

  
 DWN BY: KMR  
 CHK'D BY: MDOG  
 SCALE: 1:15,000


PROJECT: Junction Creek Subwatershed Study  
 City of Greater Sudbury, Ontario  
 TITLE: Trunk Storm Sewer System 5yr Performance - Gatchel

DATE	Dec. 2018
PROJECT No.	TY161021
REV. No.	1
FIGURE No.	C9.6



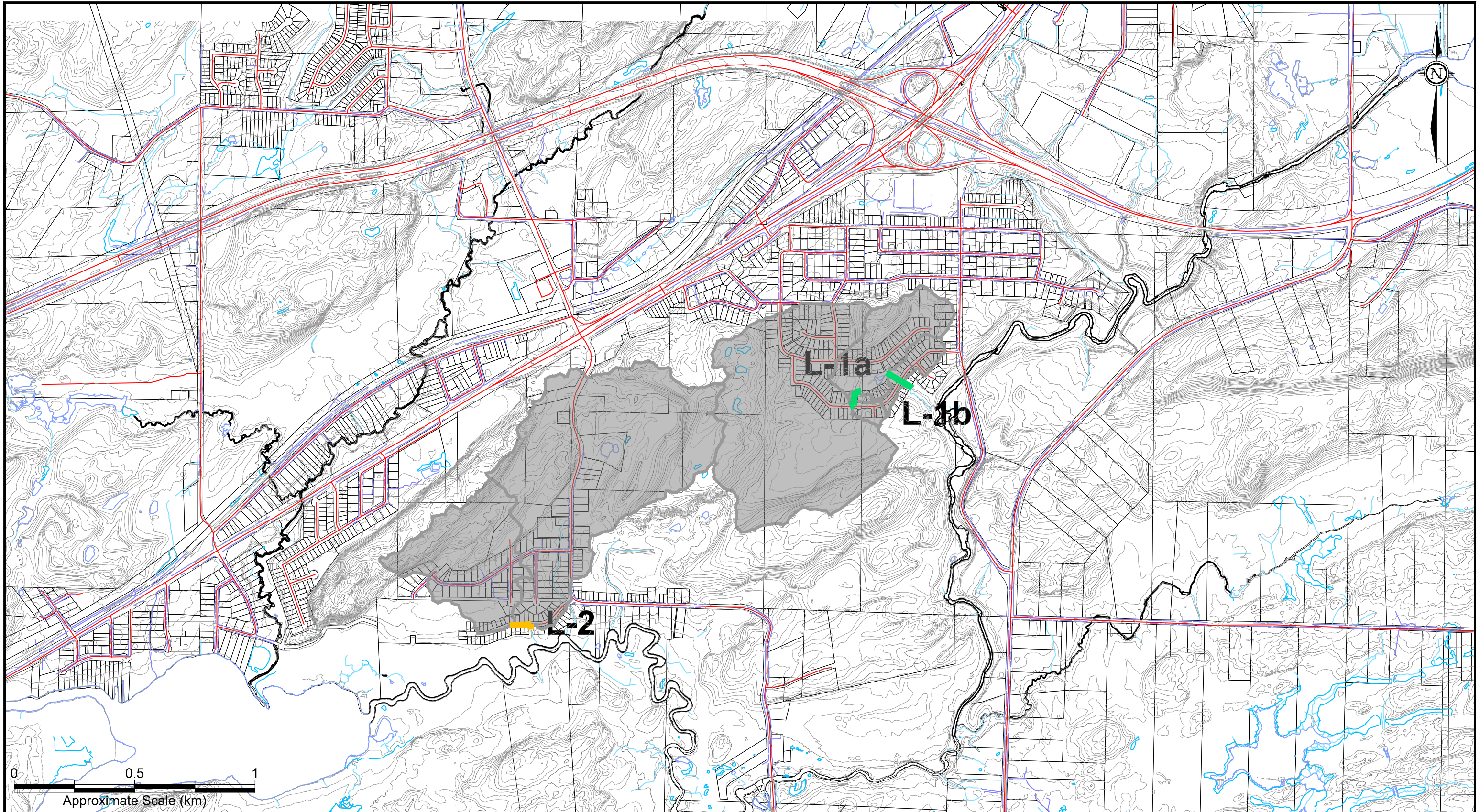
LEGEND	
	ROAD (CGS)
	LOT LINE (CGS)
	WATERCOURSE & WATERBODY (CGS)
	DITCH (CGS)
	MAJOR CONTOUR (10m)
	MINOR CONTOUR (2m)
	TRUNK STORM SEWER: NO SURCHARGING (MODEL)
	TRUNK STORM SEWER: SURCHARGING (MODEL)
	TRUNK STORM SEWER: FLOODING (MODEL)
	TRUNK STORM SEWER SUBCATCHMENT AREA


**City of Greater Sudbury**  
 Amec Foster Wheeler Environment & Infrastructure  
 131 Fielding Road  
 Lively, Ontario  
 P3Y 1L7  
 705-682-2632

DWN BY: KMR  
 CHK'D BY: MDOG  
 SCALE: 1:20,000  



PROJECT: Junction Creek Subwatershed Study  
 City of Greater Sudbury, Ontario  
 TITLE: Trunk Storm Sewer System 5yr Performance - South End

DATE	Dec. 2018
PROJECT No.	TY161021
REV. No.	1
FIGURE No.	C9.7



LEGEND	
	ROAD (CGS)
	LOT LINE (CGS)
	WATERCOURSE & WATERBODY (CGS)
	DITCH (CGS)
	MAJOR CONTOUR (10m)
	MINOR CONTOUR (2m)
	TRUNK STORM SEWER: NO SURCHARGING (MODEL)
	TRUNK STORM SEWER: SURCHARGING (MODEL)
	TRUNK STORM SEWER: FLOODING (MODEL)
	TRUNK STORM SEWER SUBCATCHMENT AREA


**City of Greater Sudbury**  
 Amec Foster Wheeler Environment & Infrastructure  
 131 Fielding Road  
 Lively, Ontario  
 P3Y 1L7  
 705-682-2632

DWN BY: KMR  
 CHK'D BY: MDOG  
 SCALE: 1:20,000  


PROJECT: Junction Creek Subwatershed Study  
 City of Greater Sudbury, Ontario  
 TITLE: Trunk Storm Sewer System 5yr Performance - Lively

DATE	Dec. 2018
PROJECT No.	TY161021
REV. No.	1
FIGURE No.	C9.8