

LEGEND		
	ROAD	
	LOT LINE	
	WATERCOURSE & WATERBODY	
	MINOR CONTOUR (2m)	
	MAJOR CONTOUR (10m)	
	HEC-RAS XS	
	EXISTING REGULATORY FLOODLINE (INDCA)	
	PRELIMINARY 100YR FLOODLINE	
	PRELIMINARY 50YR FLOODLINE	
	PRELIMINARY 25YR FLOODLINE	
	PRELIMINARY 10YR FLOODLINE	
	PRELIMINARY 5YR FLOODLINE	
	PRELIMINARY 2YR FLOODLINE	
	DOWNTOWN BOX CULVERT	

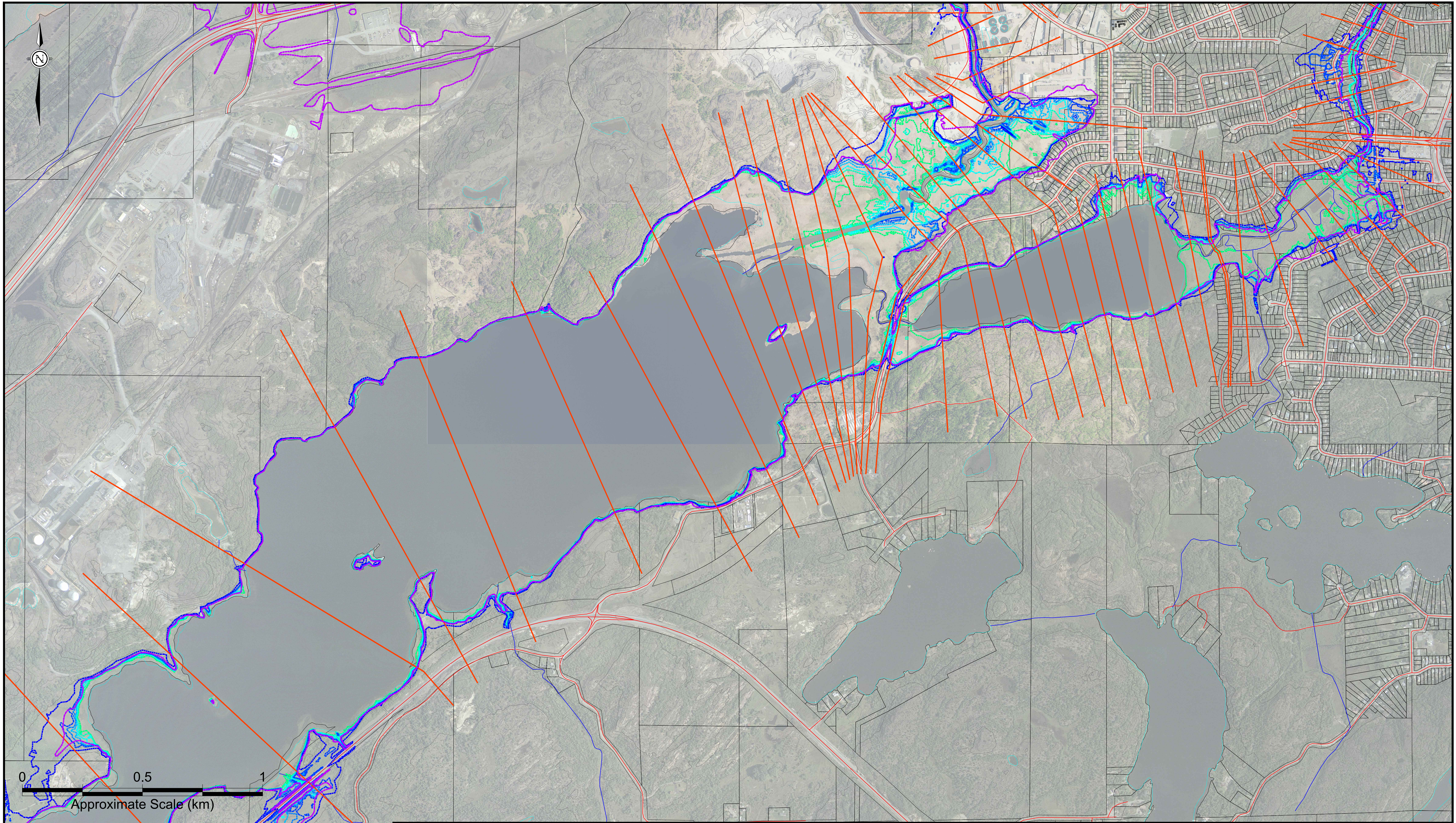
REV	DATE	ISSUE/REVISION DESCRIPTION	ENG.

City of Greater Sudbury
 Wood Environment & Infrastructure Solutions
 131 Fielding Road
 Lively, Ontario
 P3Y 1L7
 705-882-2632

DRAWN BY:	KMR
REVIEWED BY:	MDO
APPROVED BY:	

PROJECT:	JUNCTION CREEK SUBWATERSHED STUDY SUDBURY, ONTARIO
TITLE:	HEC-RAS EVENT FLOODPLAIN DELINEATION 4 MIDDLE JUNCTION CREEK & LILY CREEK

PROJECT NO.:	TY161021
REVISION NO.:	
DATE:	DEC 2018
SCALE:	1:7,500
DRAWING NO.:	C6.4



LEGEND		
	ROAD	
	LOT LINE	
	WATERCOURSE & WATERBODY	
	MINOR CONTOUR (2m)	
	MAJOR CONTOUR (10m)	
	HEC-RAS XS	
	EXISTING REGULATORY FLOODLINE (INDCA)	
	PRELIMINARY TIMMINS FLOODLINE	
	PRELIMINARY 100YR FLOODLINE	
	PRELIMINARY 50YR FLOODLINE	
	PRELIMINARY 25YR FLOODLINE	
	PRELIMINARY 10YR FLOODLINE	
	PRELIMINARY 5YR FLOODLINE	
	PRELIMINARY 2YR FLOODLINE	
	DOWNTOWN BOX CULVERT	

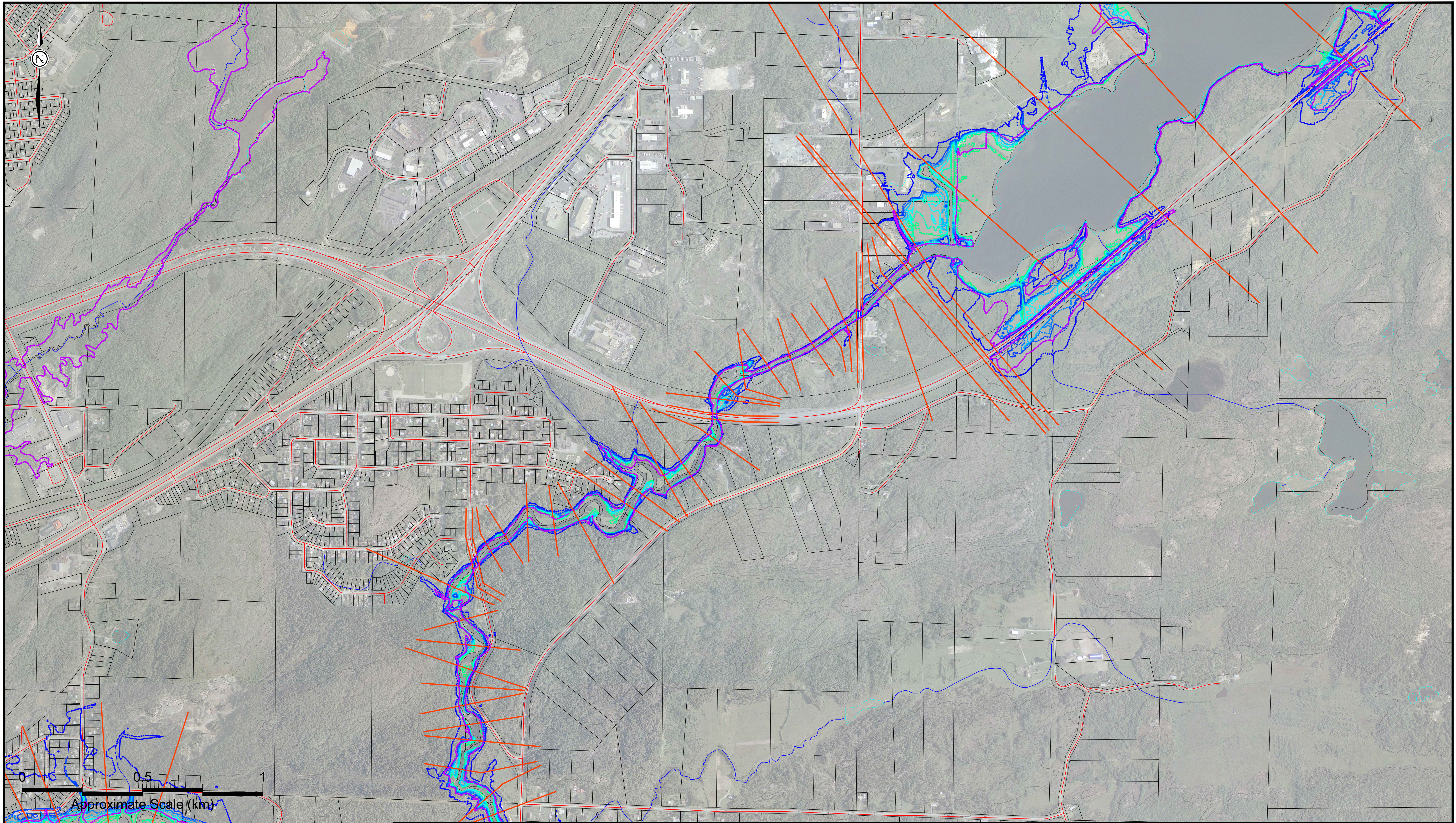
REV	DATE	ISSUE/REVISION DESCRIPTION	ENG.

City of Greater Sudbury
 Wood Environment & Infrastructure Solutions
 131 Fielding Road
 Lively, Ontario
 P3Y 1L7
 705-882-2632

DRAWN BY:	KMR
REVIEWED BY:	MDO
APPROVED BY:	

PROJECT:	JUNCTION CREEK SUBWATERSHED STUDY SUDBURY, ONTARIO
TITLE:	HEC-RAS EVENT FLOODPLAIN DELINEATION 5 ROBINSON & KELLY LAKES

PROJECT NO.:	TY161021
REVISION NO.:	
DATE:	DEC 2018
SCALE:	1:7,500
DRAWING NO.:	C6.5



LEGEND

ROAD	EXISTING REGULATORY FLOODLINE (INDCA)	PRELIMINARY 5YR FLOODLINE
LOT LINE	PRELIMINARY TIMMINS FLOODLINE	PRELIMINARY 2YR FLOODLINE
WATERCOURSE & WATERBODY	PRELIMINARY 100YR FLOODLINE	PRELIMINARY 100YR FLOODLINE
MINOR CONTOUR (2m)	PRELIMINARY 50YR FLOODLINE	PRELIMINARY 25YR FLOODLINE
MAJOR CONTOUR (10m)	PRELIMINARY 25YR FLOODLINE	PRELIMINARY 10YR FLOODLINE
HEC-RAS XS	PRELIMINARY 10YR FLOODLINE	DOWNTOWN BOX CULVERT

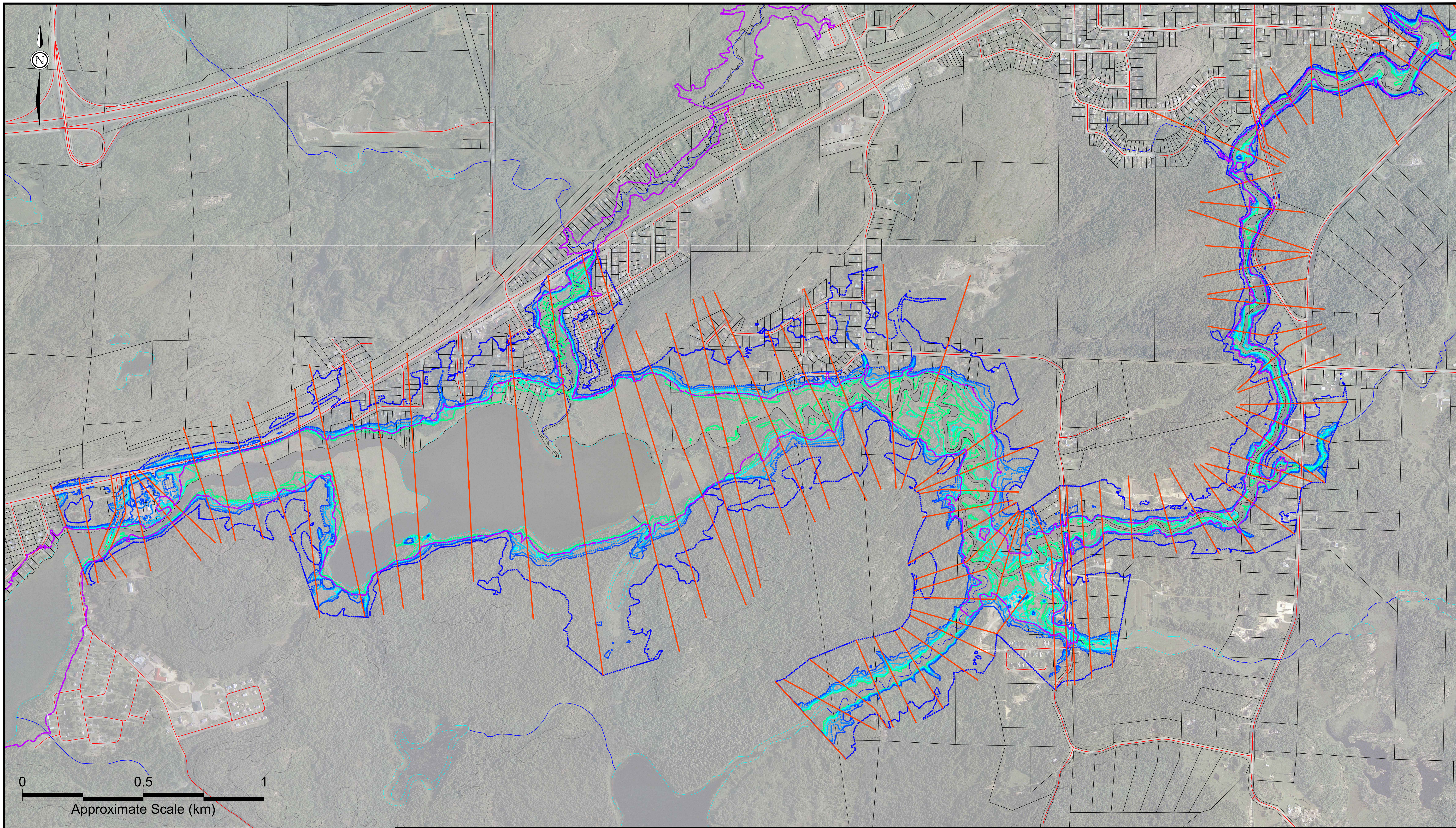
REV	DATE	ISSUE/REVISION DESCRIPTION	ENG.

City of Greater Sudbury
 Wood Environment & Infrastructure Solutions
 131 Fielding Road
 Lively, Ontario
 P3Y 1L7
 705-882-2632

DRAWN BY:	KMR
REVIEWED BY:	MDO
APPROVED BY:	

PROJECT:	JUNCTION CREEK SUBWATERSHED STUDY SUDBURY, ONTARIO
TITLE:	HEC-RAS EVENT FLOODPLAIN DELINEATION 6 KELLY LAKE & LOWER JUNCTION CREEK

PROJECT NO.:	TY161021
REVISION NO.:	
DATE:	DEC 2018
SCALE:	1:7,500
DRAWING NO.:	C6.6



LEGEND		
	ROAD	
	LOT LINE	
	WATERCOURSE & WATERBODY	
	MINOR CONTOUR (2m)	
	MAJOR CONTOUR (10m)	
	HEC-RAS XS	
	EXISTING REGULATORY FLOODLINE (INDCA)	
	PRELIMINARY TIMMINS FLOODLINE	
	PRELIMINARY 100YR FLOODLINE	
	PRELIMINARY 50YR FLOODLINE	
	PRELIMINARY 25YR FLOODLINE	
	PRELIMINARY 10YR FLOODLINE	
	PRELIMINARY 5YR FLOODLINE	
	PRELIMINARY 2YR FLOODLINE	
	DOWNTOWN BOX CULVERT	

REV	DATE	ISSUE/REVISION DESCRIPTION	ENG.

City of Greater Sudbury
 Wood Environment & Infrastructure Solutions
 131 Fielding Road
 Lively, Ontario
 P0Y 1L7
 705-882-2632

DRAWN BY:	KMR
REVIEWED BY:	MDO
APPROVED BY:	

PROJECT:	JUNCTION CREEK SUBWATERSHED STUDY SUDBURY, ONTARIO
TITLE:	HEC-RAS EVENT FLOODPLAIN DELINEATION 7 LOWER JUNCTION CREEK & MUD LAKE

PROJECT NO.:	TY161021
REVISION NO.:	
DATE:	DEC 2018
SCALE:	1:7,500
DRAWING NO.:	C6.7