

LEGEND

ROAD	EXISTING REGULATORY FLOODLINE (INDCA)	PRELIMINARY 5YR FLOODLINE
LOT LINE	PRELIMINARY TIMMINS FLOODLINE	PRELIMINARY 2YR FLOODLINE
WATERCOURSE & WATERBODY	PRELIMINARY 100YR FLOODLINE	DOWNTOWN BOX CULVERT
MINOR CONTOUR (2m)	PRELIMINARY 50YR FLOODLINE	
MAJOR CONTOUR (10m)	PRELIMINARY 250YR FLOODLINE	
HEC-RAS XS	PRELIMINARY 10YR FLOODLINE	

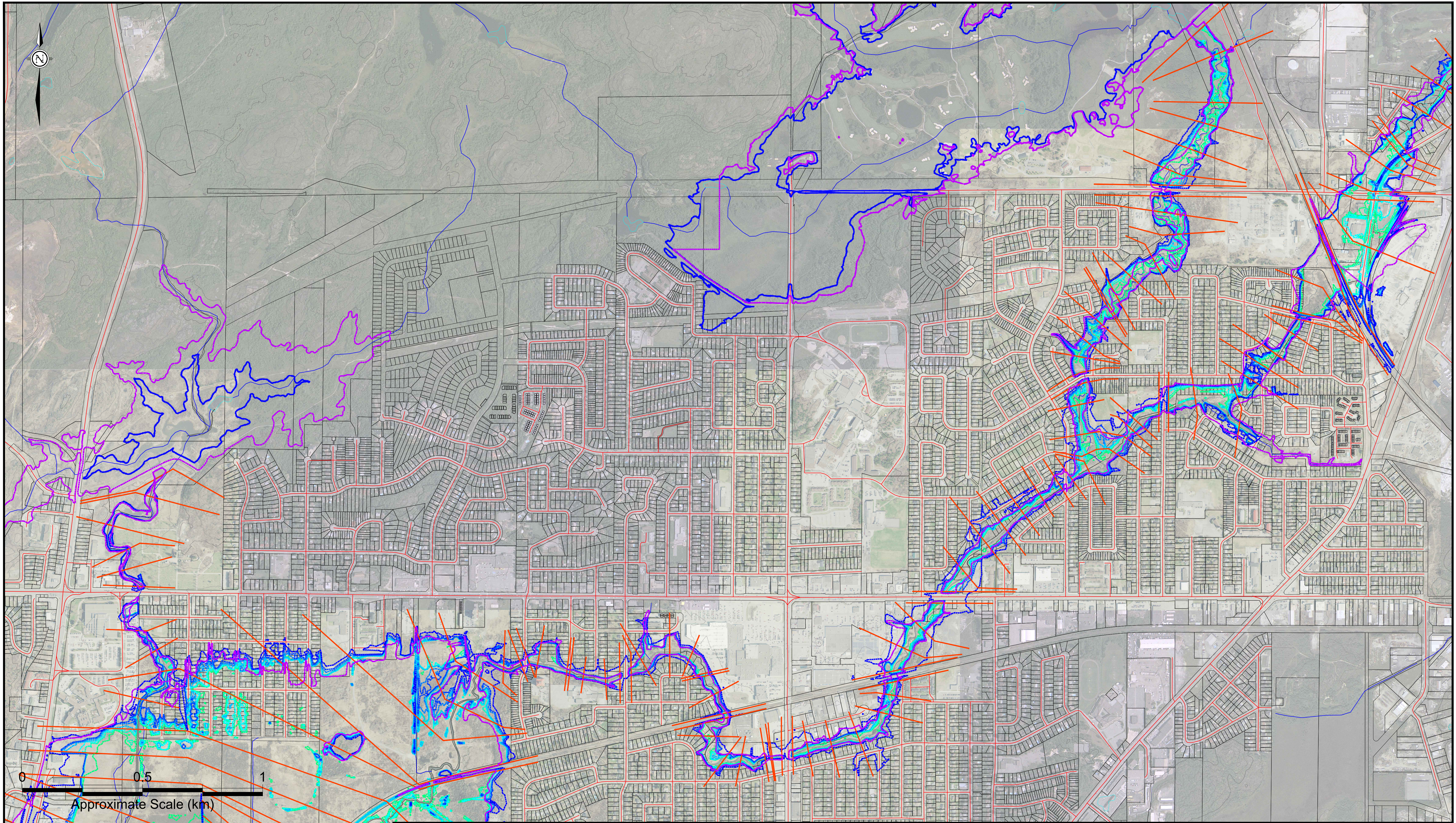
REV	DATE	ISSUE/REVISION DESCRIPTION	ENG.

City of Greater Sudbury
 Wood Environment & Infrastructure Solutions
 131 Fielding Road
 Lively, Ontario
 P3Y 1L7
 705-882-2632

DRAWN BY:	KMR
REVIEWED BY:	MDO
APPROVED BY:	

PROJECT:	JUNCTION CREEK SUBWATERSHED STUDY SUDBURY, ONTARIO
TITLE:	HEC-RAS EVENT FLOODPLAIN DELINEATION 1 GARSON & UPPER JUNCTION CREEK

PROJECT NO.:	TY161021
REVISION NO.:	
DATE:	DEC 2018
SCALE:	1:7,500
DRAWING NO.:	C6.1



LEGEND

ROAD	EXISTING REGULATORY FLOODLINE (INDCA)	PRELIMINARY 5YR FLOODLINE
LOT LINE	PRELIMINARY TIMMINS FLOODLINE	PRELIMINARY 2YR FLOODLINE
WATERCOURSE & WATERBODY	PRELIMINARY 100YR FLOODLINE	DOWNTOWN BOX CULVERT
MINOR CONTOUR (2m)	PRELIMINARY 50YR FLOODLINE	
MAJOR CONTOUR (10m)	PRELIMINARY 25YR FLOODLINE	
HEC-RAS XS	PRELIMINARY 10YR FLOODLINE	

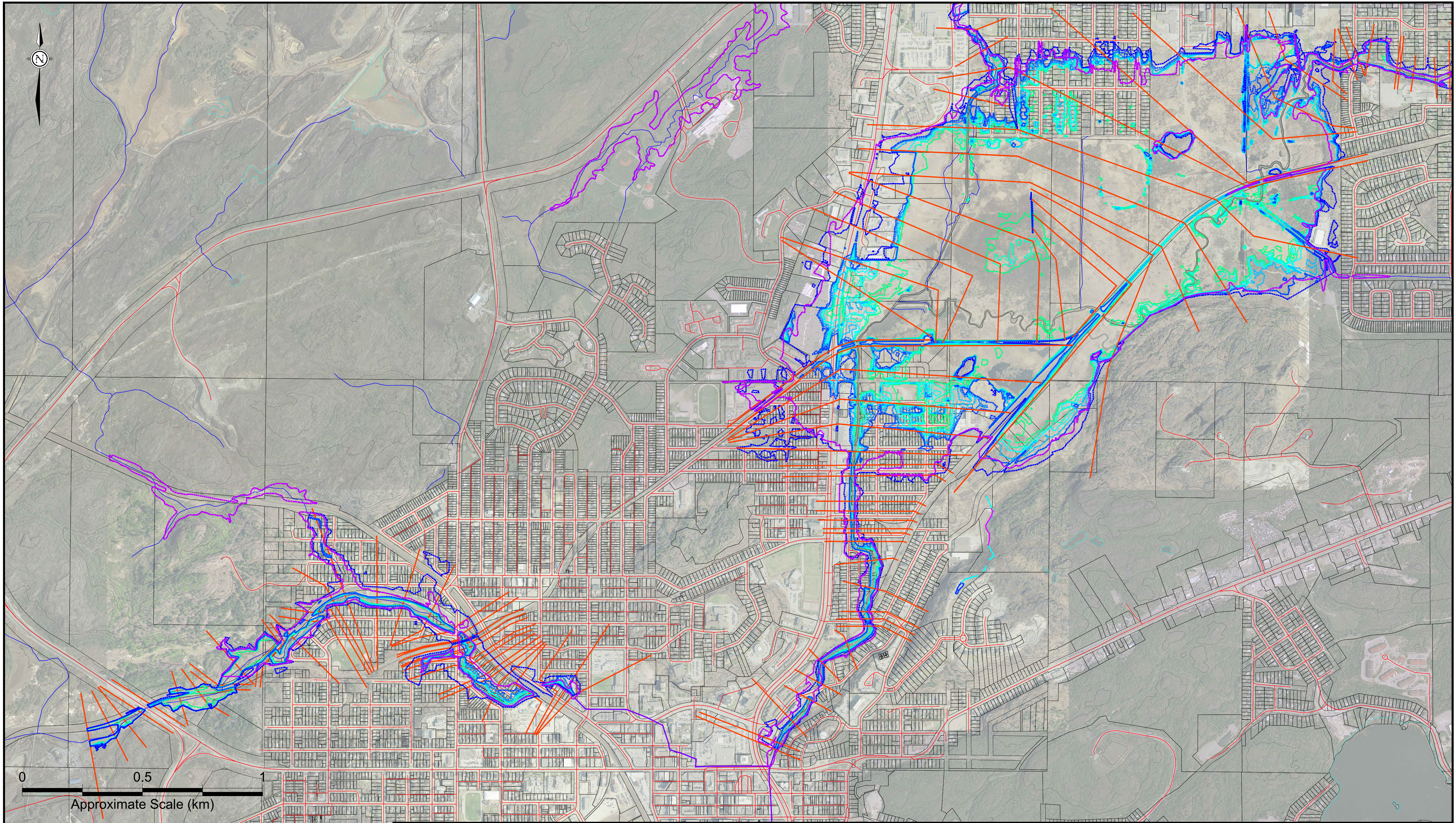
REV	DATE	ISSUE/REVISION DESCRIPTION	ENG.

City of Greater Sudbury
 Wood Environment & Infrastructure Solutions
 131 Fielding Road
 Lively, Ontario
 P3Y 1L7
 705-882-2632

DRAWN BY:	KMR
REVIEWED BY:	MDO
APPROVED BY:	

PROJECT: JUNCTION CREEK SUBWATERSHED STUDY
 SUDBURY, ONTARIO
 TITLE: HEC-RAS EVENT FLOODPLAIN DELINEATION 2
 UPPER JUNCTION CREEK & TRIBUTARIES

PROJECT NO.:	TY161021
REVISION NO.:	
DATE:	DEC 2018
SCALE:	1:7,500
DRAWING NO.:	C6.2



LEGEND

ROAD	EXISTING REGULATORY FLOODLINE (NDCA)	PRELIMINARY 5YR FLOODLINE
LOT LINE	PRELIMINARY TIMMINS FLOODLINE	PRELIMINARY 2YR FLOODLINE
WATERCOURSE & WATERBODY	PRELIMINARY 100YR FLOODLINE	DOWNTOWN BOX CULVERT
MINOR CONTOUR (2m)	PRELIMINARY 50YR FLOODLINE	
MAJOR CONTOUR (10m)	PRELIMINARY 250YR FLOODLINE	
HEC-RAS XS	PRELIMINARY 10YR FLOODLINE	

REV	DATE	ISSUE/REVISION DESCRIPTION	ENG.

City of Greater Sudbury
 Wood Environment & Infrastructure Solutions
 131 Fielding Road
 Lively, Ontario
 P3Y 1L7
 705-882-2632

DRAWN BY:	KMR
REVIEWED BY:	MDO
APPROVED BY:	

PROJECT:	JUNCTION CREEK SUBWATERSHED STUDY SUDBURY, ONTARIO
TITLE:	HEC-RAS EVENT FLOODPLAIN DELINEATION 3 PONDEROSA & NOLIN CREEK

PROJECT NO.:	TY161021
REVISION NO.:	
DATE:	DEC 2018
SCALE:	1:7,500
DRAWING NO.:	C6.3