

LEGEND

- ROAD (CGS)
- LOT LINE (CGS)
- WATERCOURSE & WATERBODY (CGS)
- DITCH (CGS)
- MAJOR CONTOUR (10m)
- MINOR CONTOUR (2m)
- MAJOR SYSTEM (MODEL): ROADWAY FLOOD DEPTH <0.15m
- MAJOR SYSTEM (MODEL): ROADWAY FLOOD DEPTH 0.15–0.25m
- MAJOR SYSTEM (MODEL): ROADWAY FLOOD DEPTH >0.25m
- TRUNK STORM SEWER SUBCATCHMENT AREA



City of Greater Sudbury

Amec Foster Wheeler Environment & Infrastructure

131 Fielding Road
Lively, Ontario
P3Y 1L7
705-682-2632



DWN BY:
KMR

CHK'D BY:
MDOG

SCALE:
1:15,000

PROJECT

Junction Creek Subwatershed Study
City of Greater Sudbury, Ontario

TITLE

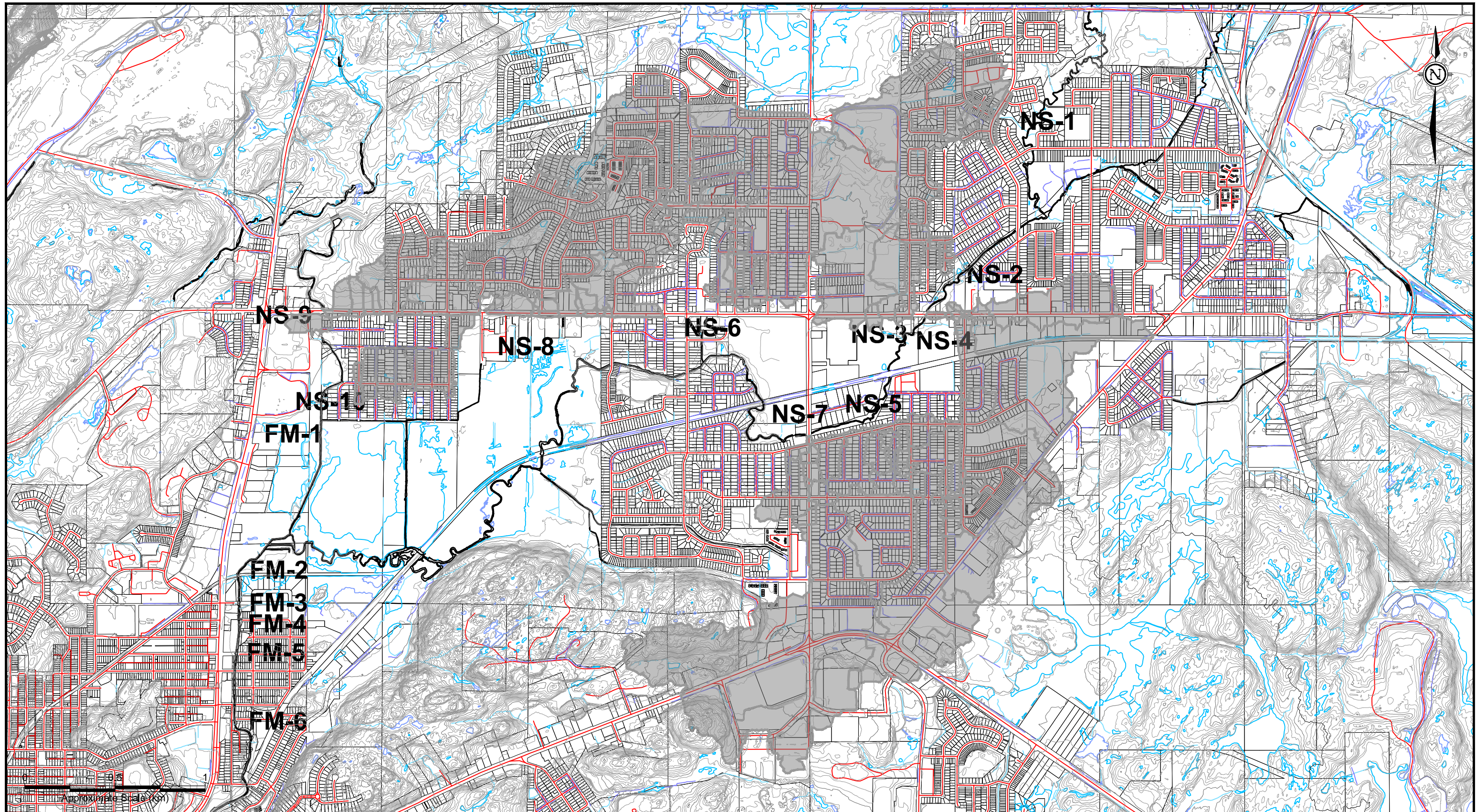
Trunk Storm Major System 100yr Performance - Garson

DATE
Dec. 2018

PROJECT No.
TY161021

REV. No.
1

FIGURE No.
C10.1



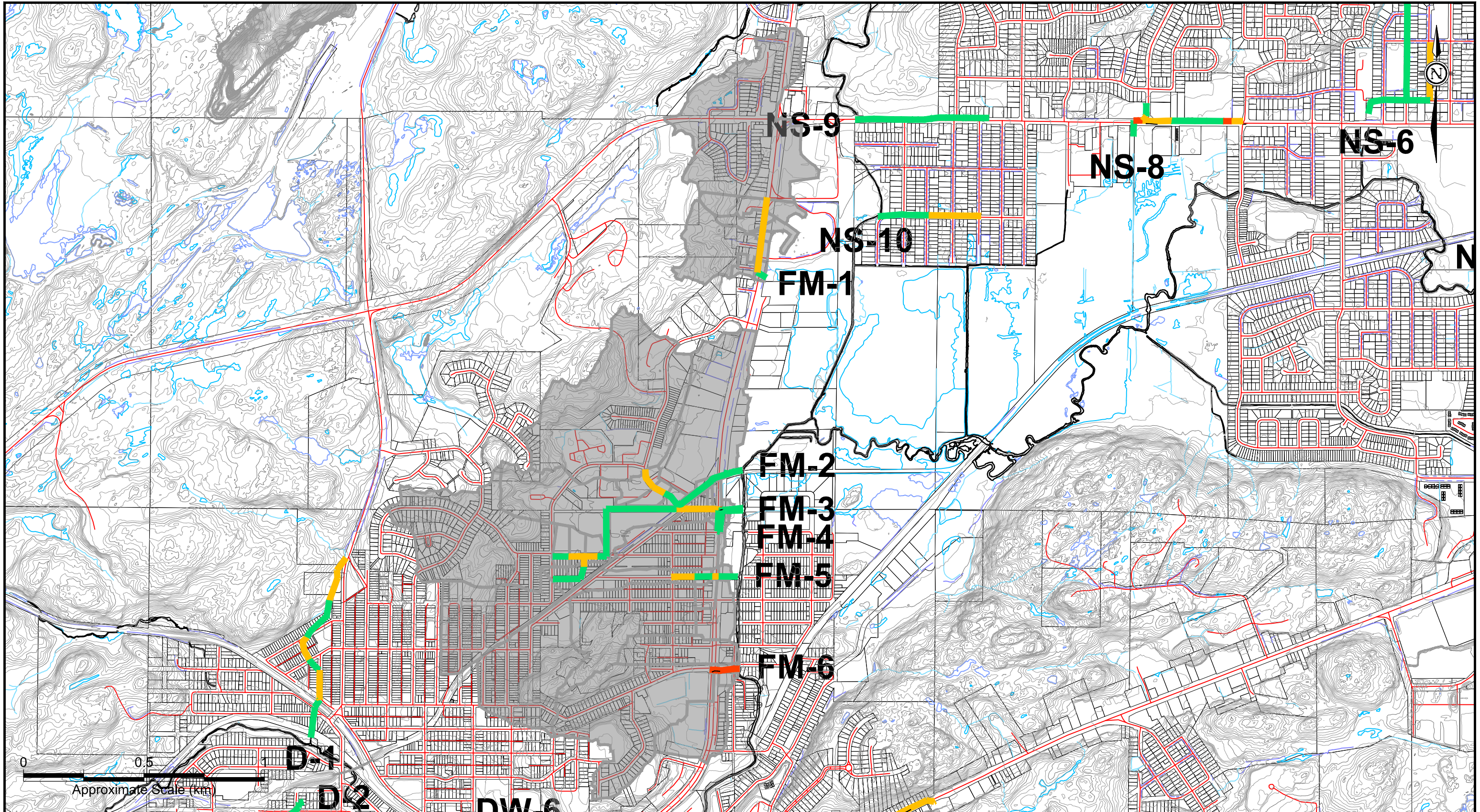
LEGEND	
	ROAD (CGS)
	LOT LINE (CGS)
	WATERCOURSE & WATERBODY (CGS)
	DITCH (CGS)
	MAJOR CONTOUR (10m)
	MINOR CONTOUR (2m)
	MAJOR SYSTEM (MODEL): ROADWAY FLOOD DEPTH <0.15m
	MAJOR SYSTEM (MODEL): ROADWAY FLOOD DEPTH 0.15-0.25m
	MAJOR SYSTEM (MODEL): ROADWAY FLOOD DEPTH >0.25m
	TRUNK STORM SEWER SUBCATCHMENT AREA


City of Greater Sudbury
 Wood Environment & Infrastructure Solutions
 131 Fielding Road
 Lively, Ontario
 P3Y 1L7
 705-682-2632

DWN BY: KMR
 CHK'D BY: MDOG
 SCALE: 1:20,000

PROJECT: Junction Creek Subwatershed Study
 City of Greater Sudbury, Ontario
 TITLE: Trunk Storm Major System 100yr Performance - New Sudbury

DATE	Dec. 2018
PROJECT No.	TY161021
REV. No.	1
FIGURE No.	C10.2



LEGEND

- ROAD (CGS)
- LOT LINE (CGS)
- WATERCOURSE & WATERBODY (CGS)
- DITCH (CGS)
- MAJOR CONTOUR (10m)
- MINOR CONTOUR (2m)
- MAJOR SYSTEM (MODEL): ROADWAY FLOOD DEPTH <0.15m
- MAJOR SYSTEM (MODEL): ROADWAY FLOOD DEPTH 0.15–0.25m
- MAJOR SYSTEM (MODEL): ROADWAY FLOOD DEPTH >0.25m
- TRUNK STORM SEWER SUBCATCHMENT AREA



City of Greater Sudbury

Amec Foster Wheeler Environment & Infrastructure

131 Fielding Road
Lively, Ontario
P3Y 1L7
705-682-2632



DWN BY:

KMR

CHK'D BY:

MDOG

SCALE:

1:15,000

PROJECT

Junction Creek Subwatershed Study
City of Greater Sudbury, Ontario

TITLE

Trunk Storm Major System 100yr Performance - Flour Mill

DATE

Dec. 2018

PROJECT No.

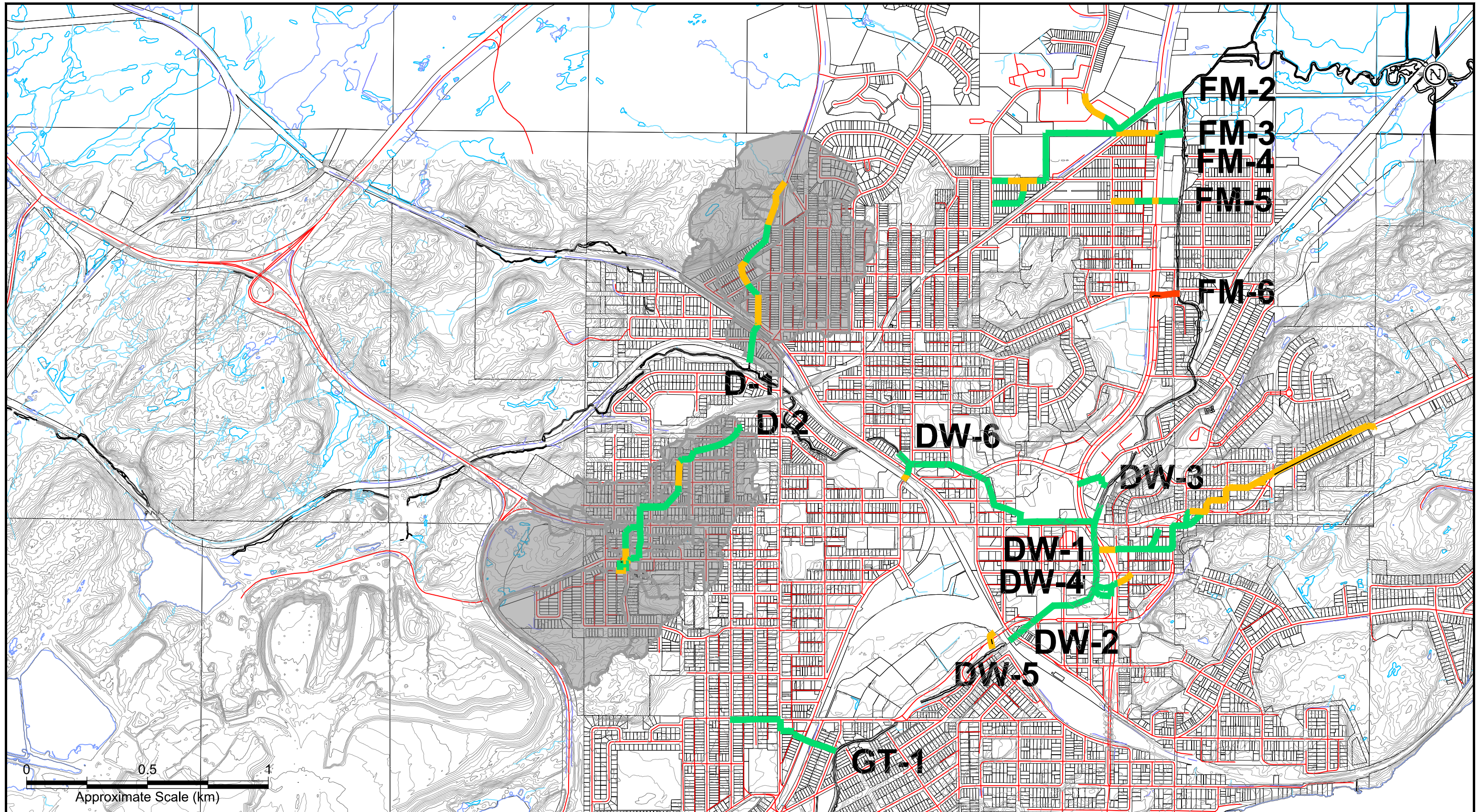
TY161021

REV. No.

1

FIGURE No.

C10.3



LEGEND	
	ROAD (CGS)
	LOT LINE (CGS)
	WATERCOURSE & WATERBODY (CGS)
	DITCH (CGS)
	MAJOR CONTOUR (10m)
	MINOR CONTOUR (2m)
	MAJOR SYSTEM (MODEL): ROADWAY FLOOD DEPTH <math><0.15\text{m}</math>
	MAJOR SYSTEM (MODEL): ROADWAY FLOOD DEPTH $0.15\text{--}0.25\text{m}$
	MAJOR SYSTEM (MODEL): ROADWAY FLOOD DEPTH >0.25m
	TRUNK STORM SEWER SUBCATCHMENT AREA

City of Greater Sudbury

Amec Foster Wheeler Environment & Infrastructure

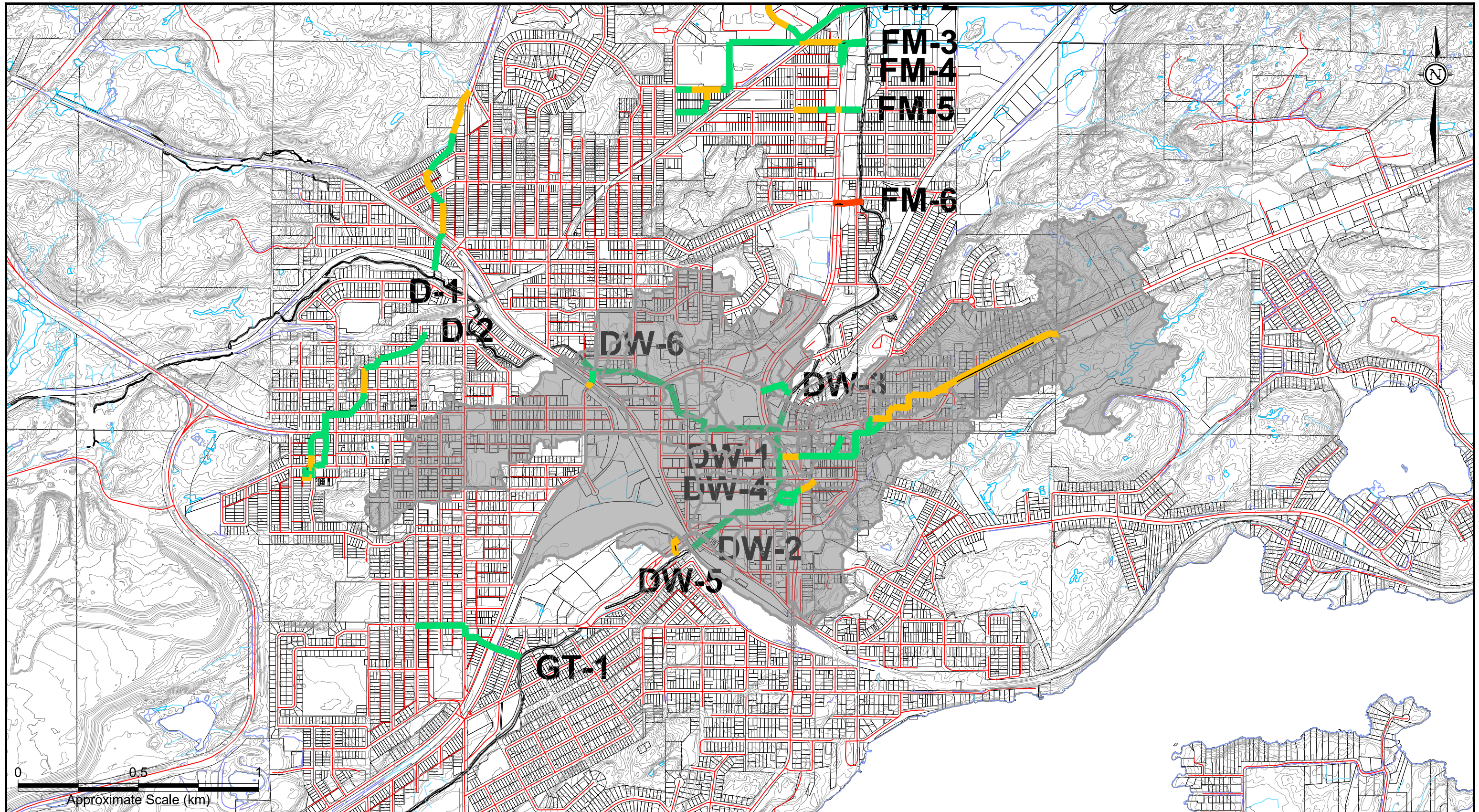
131 Fielding Road
 Lively, Ontario
 P3Y 1L7
 705-682-2632

DWN BY: KMR
 CHK'D BY: MDOG
 SCALE: 1:15,000

PROJECT: Junction Creek Subwatershed Study
 City of Greater Sudbury, Ontario


TITLE: Trunk Storm Major System 100yr Performance - Donovan

DATE	Dec. 2018
PROJECT No.	TY161021
REV. No.	1
FIGURE No.	C10.4



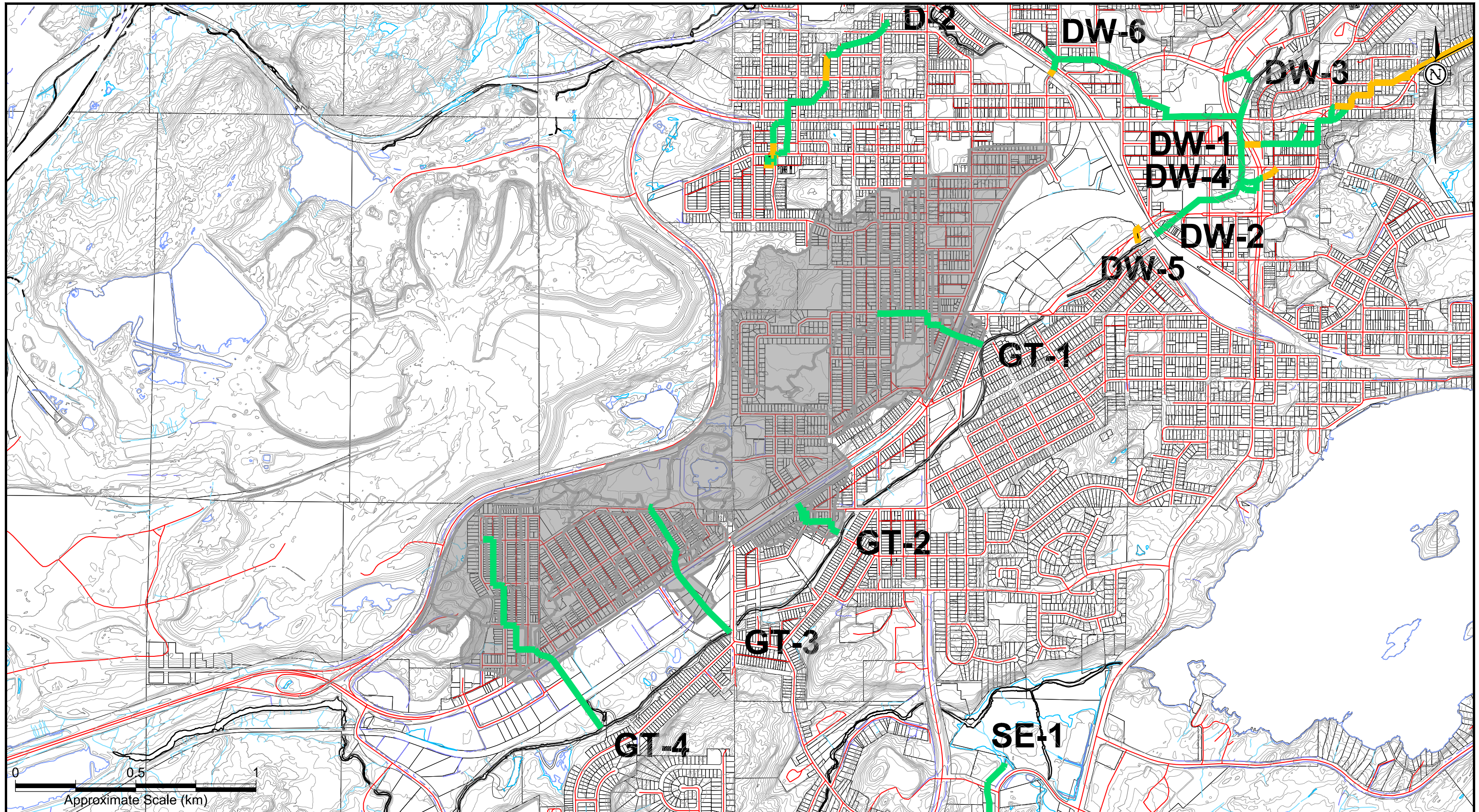
LEGEND	
	ROAD (CGS)
	LOT LINE (CGS)
	WATERCOURSE & WATERBODY (CGS)
	DITCH (CGS)
	MAJOR CONTOUR (10m)
	MINOR CONTOUR (2m)
	MAJOR SYSTEM (MODEL): ROADWAY FLOOD DEPTH <math><0.15\text{m}</math>
	MAJOR SYSTEM (MODEL): ROADWAY FLOOD DEPTH $0.15\text{--}0.25\text{m}$
	MAJOR SYSTEM (MODEL): ROADWAY FLOOD DEPTH >math>0.25\text{m}</math>
	TRUNK STORM SEWER SUBCATCHMENT AREA


City of Greater Sudbury
 Amec Foster Wheeler Environment & Infrastructure
 131 Fielding Road
 Lively, Ontario
 P3Y 1L7
 705-682-2632

DWN BY: KMR
 CHK'D BY: MDOG
 SCALE: 1:15,000



PROJECT: Junction Creek Subwatershed Study
 City of Greater Sudbury, Ontario
 TITLE: Trunk Storm Major System 100yr Performance - South End

DATE	Dec. 2018
PROJECT No.	TY161021
REV. No.	1
FIGURE No.	C10.5



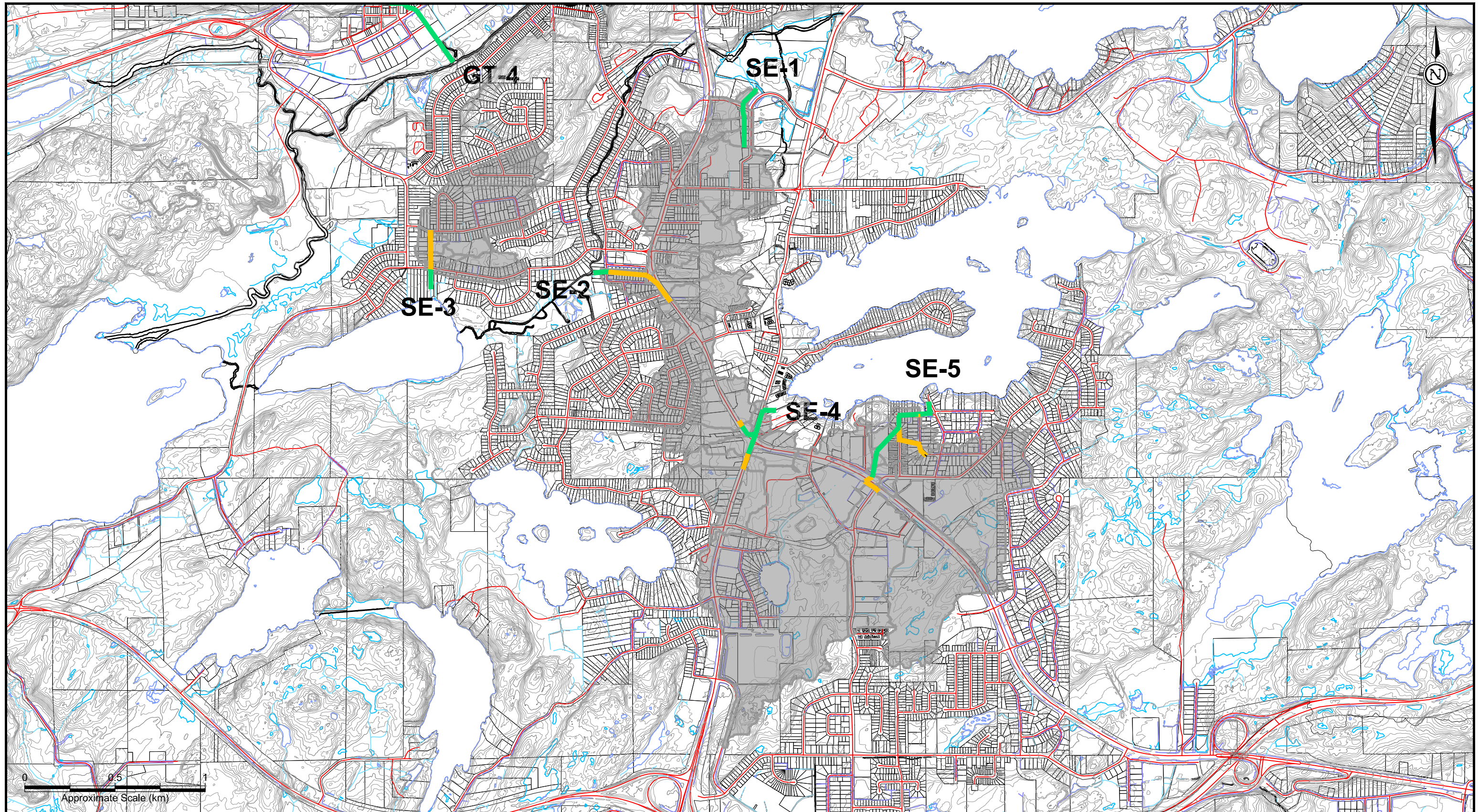
LEGEND	
	ROAD (CGS)
	LOT LINE (CGS)
	WATERCOURSE & WATERBODY (CGS)
	DITCH (CGS)
	MAJOR CONTOUR (10m)
	MINOR CONTOUR (2m)
	MAJOR SYSTEM (MODEL): ROADWAY FLOOD DEPTH <0.15m
	MAJOR SYSTEM (MODEL): ROADWAY FLOOD DEPTH 0.15–0.25m
	MAJOR SYSTEM (MODEL): ROADWAY FLOOD DEPTH >0.25m
	TRUNK STORM SEWER SUBCATCHMENT AREA


City of Greater Sudbury
 Amec Foster Wheeler Environment & Infrastructure
 131 Fielding Road
 Lively, Ontario
 P3Y 1L7
 705-682-2632


 DWN BY: KMR
 CHK'D BY: MDOG
 SCALE: 1:15,000


PROJECT
Junction Creek Subwatershed Study
 City of Greater Sudbury, Ontario
 TITLE
Trunk Storm Major System 100yr Performance - Gatchel

DATE	Dec. 2018
PROJECT No.	TY161021
REV. No.	1
FIGURE No.	C10.6



LEGEND	
	ROAD (CGS)
	LOT LINE (CGS)
	WATERCOURSE & WATERBODY (CGS)
	DITCH (CGS)
	MAJOR CONTOUR (10m)
	MINOR CONTOUR (2m)
	MAJOR SYSTEM (MODEL): ROADWAY FLOOD DEPTH <0.15m
	MAJOR SYSTEM (MODEL): ROADWAY FLOOD DEPTH 0.15-0.25m
	MAJOR SYSTEM (MODEL): ROADWAY FLOOD DEPTH >0.25m
	TRUNK STORM SEWER SUBCATCHMENT AREA

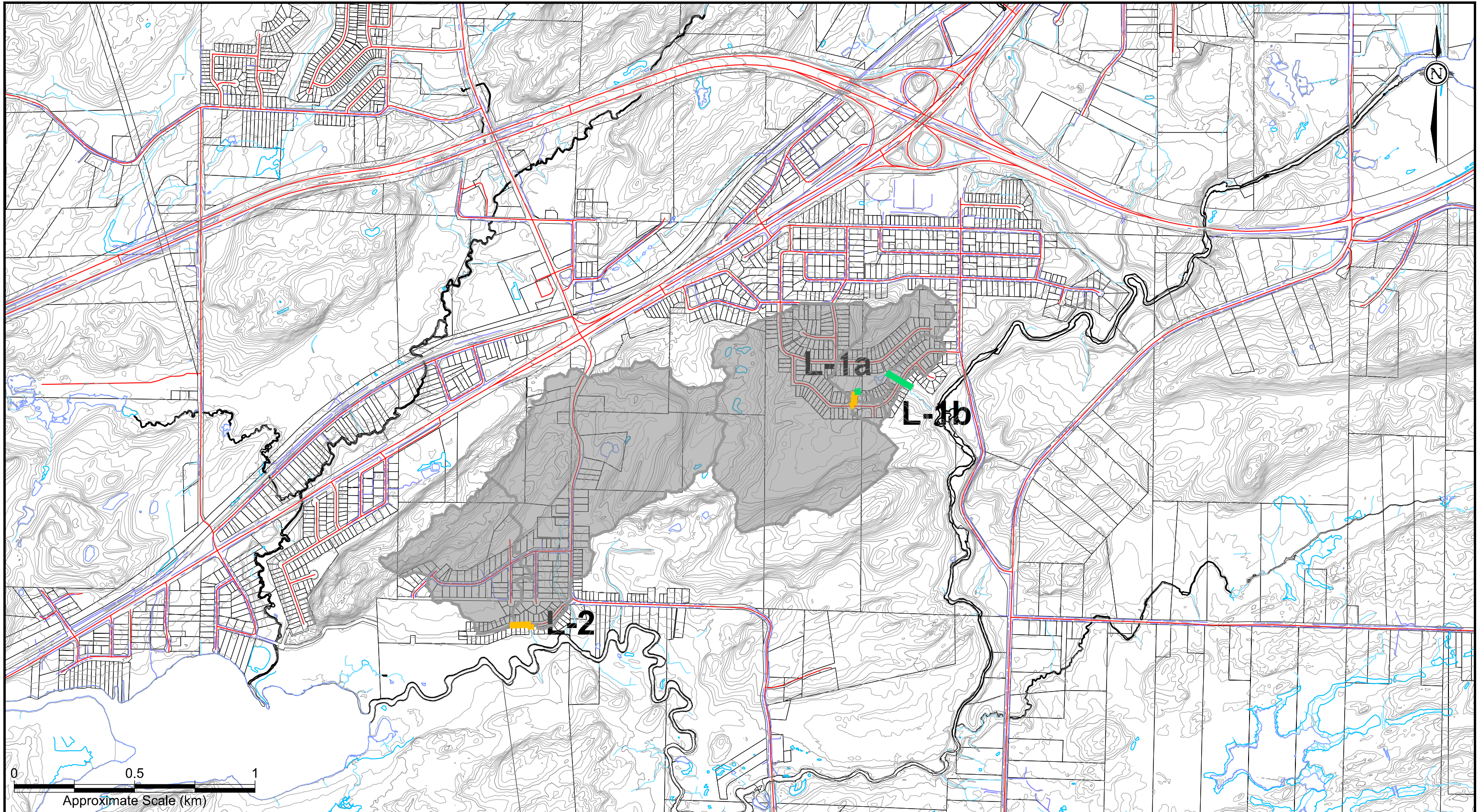

City of Greater Sudbury
 Amec Foster Wheeler Environment & Infrastructure
 131 Fielding Road
 Lively, Ontario
 P3Y 1L7
 705-682-2632



DWN BY:	KMR
CHK'D BY:	MDOG
SCALE:	1:20,000


PROJECT	Junction Creek Subwatershed Study City of Greater Sudbury, Ontario
TITLE	Trunk Storm Major System 100yr Performance - South End

DATE	Dec. 2018
PROJECT No.	TY161021
REV. No.	1
FIGURE No.	C10.7



LEGEND	
	ROAD (CGS)
	LOT LINE (CGS)
	WATERCOURSE & WATERBODY (CGS)
	DITCH (CGS)
	MAJOR CONTOUR (10m)
	MINOR CONTOUR (2m)
	MAJOR SYSTEM (MODEL): ROADWAY FLOOD DEPTH <0.15m
	MAJOR SYSTEM (MODEL): ROADWAY FLOOD DEPTH 0.15–0.25m
	MAJOR SYSTEM (MODEL): ROADWAY FLOOD DEPTH >0.25m
	TRUNK STORM SEWER SUBCATCHMENT AREA


City of Greater Sudbury
 Amec Foster Wheeler Environment & Infrastructure
 131 Fielding Road
 Lively, Ontario
 P3Y 1L7
 705-682-2632

DWN BY: KMR
 CHK'D BY: MDOG
 SCALE: 1:20,000


PROJECT: Junction Creek Subwatershed Study
 City of Greater Sudbury, Ontario
 TITLE: Trunk Storm Major System 100yr Performance - Lively

DATE	Dec. 2018
PROJECT No.	TY161021
REV. No.	1
FIGURE No.	C10.8