

Residential Waste Collection



16,710
of blue boxes provided

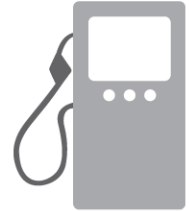


865
of Big Blues sold*

*Sales of Big Blues
Discontinued May
2023



4,923
of green carts provided



653,977
litres of gasoline
used to collect waste



High Density Residential Properties (≥7 units)

354
properties with 12,486
residential units



Multi-Type Properties (non-residential with residential units)

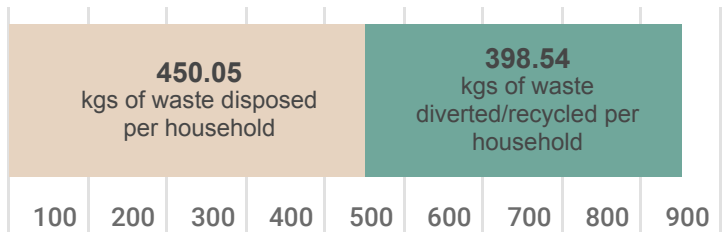
156
residential units in
properties with 7
residential units or
more

194
residential units in
properties with 2 to
6 residential units

318
residential units in
properties with one
residential unit (1:1)

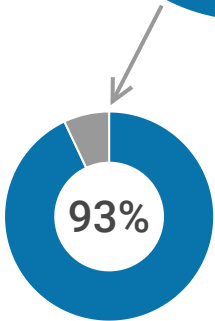
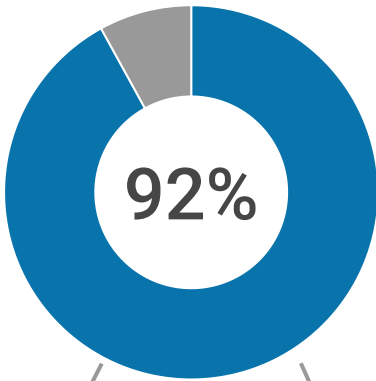
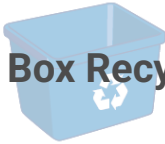


848.59
kgs of waste generated per household

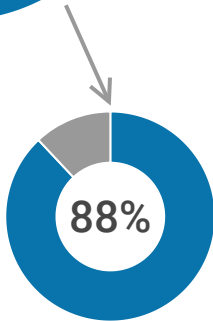


Residential Participation Rate** (2023)

Blue Box Recycling

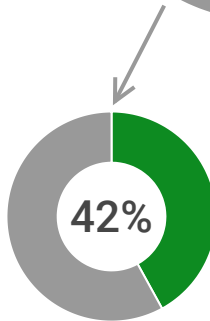
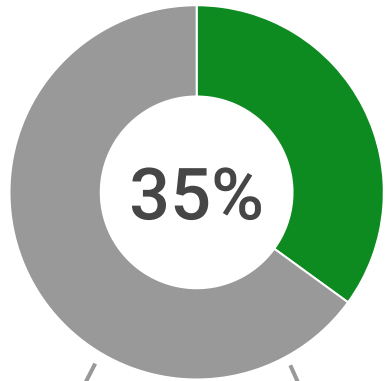


93%
Participation for properties with 1 to 2 residential units

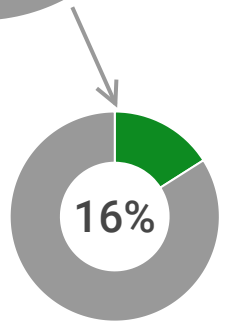


88%
Participation for properties with 3 to 6 residential units

Green Cart Organics



42%
Participation for properties with 1 to 2 residential units



16%
Participation for properties with 3 to 6 residential units

**2022/2023 Study Area (2,829 households in Skead, Flour Mill, West End, Long Lake)

Non-residential Collection (Participants)



171
of Yellow Boxes



61
of Yellow Bags



14
of Yellow Carts

Special Event Collection (Blue Box Recycling and Organics)



25
of special events that
requested recycling/organics
collection



29,850
of participants at Special Events
(estimate according to event
organizers)

Support Programs



884

of diaper exemptions



19

of cloth diaper rebates



166

of medical exemptions



0

of pet digesters



18

of pet waste exemptions

Residential
Collecting
résidentielle

Garbage Tags • Étiquettes de déchets



NON-REFUNDABLE / NON REMBOURSABLE

71,395

of garbage bag tags sold
(individual tags)



104

of presentations, events,
tours, requests for mascots,
education centre visits, etc.



2,816

of field inspections/home visits

WASTE WISE



45,639

of waste wise app subscribers
(running total since November 2016)



6,970

of waste wise app new subscriptions in 2023



7,588

of new active reminder alerts set for collection day



721,589

of waste collection schedules viewed



4,450

of addresses searched



640,815

of materials searched

Top 5 items searched



1. Garbage
2. Pet Waste
3. Tissue Paper for Gifts
4. Television
5. Rigid Styrofoam

Requests and Website



461,125

of times someone viewed the Garbage and Recycling section on the City's website



7,545

of 311 inquiries/requests for the Environmental Services Division

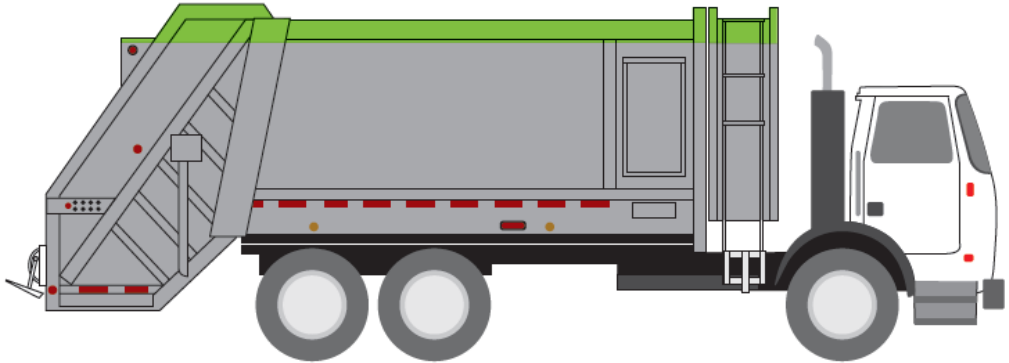
Top Citizen requests sent to Environmental Services





1. Missed Collection
2. Other Environmental Services Inquiries
3. Illegal Dumping Complaint (Public Property)
4. Tipping Fee/Landfill Inquiries
5. Collector Complaints

Residential Roadside Waste Collection

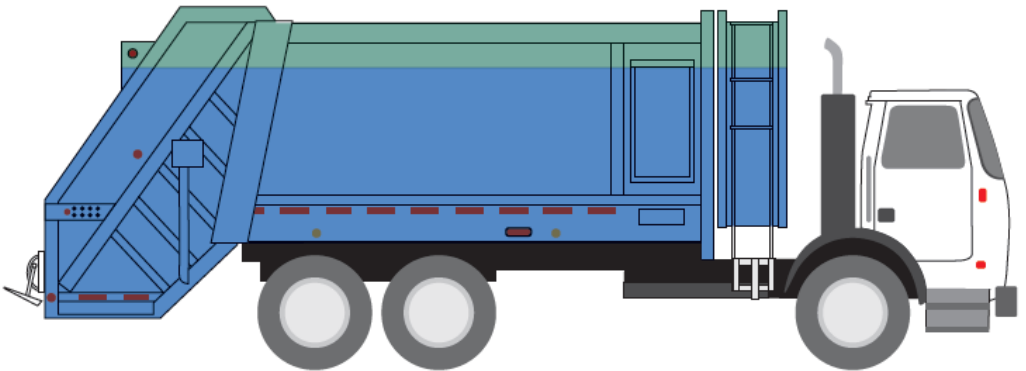
Garbage and Yard & Leaf Trimmings




 Tonnes of leaf & yard collected - 2,717

 Tonnes of garbage collected - 14,990

Blue Box Recycling and Green Cart Organics



 Tonnes of organics collected - 5,122

 Tonnes of recycling collected - 10,153

Azilda Landfill



20,969
Waste Received
(Tonnes)



18,184
Waste Landfilled
(Tonnes)



56,075
of trips to the landfill



3
of landfill gas
probes

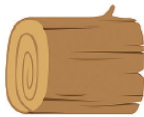


33
of groundwater
monitoring wells



19
of surface water
monitoring locations

Compostables



1,289
(Tonnes)

Reuse



4
Cloth diverted
(Tonnes)



15
diverted at Reuse Area
(Tonnes)

Reuse/Recycling



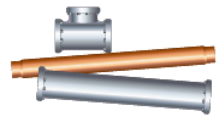
31
Electronic Waste
(Tonnes)



233
Concrete, Brick and Block
(Tonnes)



494
Other Wood Waste
(Tonnes)



257
Scrap Metal and White Goods
(Tonnes)



70
Tires
(Tonnes)

Hanmer Landfill



15,395
Waste Received
(Tonnes)



11,832
Waste Landfilled
(Tonnes)



66,406
of trips to the landfill



0
of landfill gas
probes

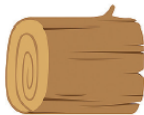


32
of groundwater
monitoring wells



6
of surface water
monitoring locations

Compostables



1,905
(Tonnes)

Reuse



10
Cloth diverted
(Tonnes)



23
diverted at Reuse Area
(Tonnes)

Reuse/Recycling



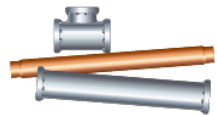
30
Electronic Waste
(Tonnes)



159
Concrete, Brick and Block
(Tonnes)



578
Other Wood Waste
(Tonnes)



276
Scrap Metal and White Goods
(Tonnes)



66
Tires
(Tonnes)

Sudbury Landfill



76,658
Waste Received*
(Tonnes)



58,333
Waste Landfilled*
(Tonnes)



149,587
of trips to the landfill



4
of landfill gas
probes

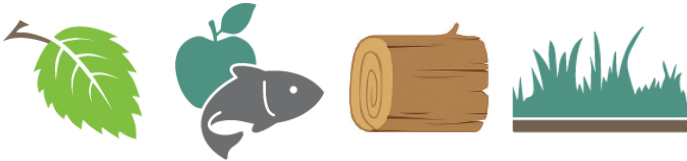


22
of groundwater
monitoring wells



21
of surface water
monitoring locations

Compostables*



9,743
(Tonnes)

Reuse



6
Cloth diverted
(Tonnes)



26
diverted at Reuse Store
(Tonnes)

Reuse/Recycling



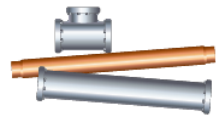
135
Electronic Waste
(Tonnes)



855
Concrete, Brick and Block*
(Tonnes)



2,790
Other Wood Waste*
(Tonnes)



585
Scrap Metal and White Goods
(Tonnes)



127
Tires
(Tonnes)

* Includes waste transferred to Sudbury Landfill from Walden Transfer Station

Walden Transfer Station



2,124
Waste Received
(Tonnes)



1,246
Waste Landfilled*
(Tonnes)



29,403
of trips to the
transfer station



8
of landfill gas
probes

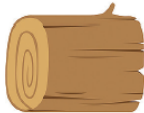


77
of groundwater
monitoring wells



26
of surface water
monitoring locations

Compostables*



232
(Tonnes)

Reuse



2
Cloth diverted
(Tonnes)



10
diverted at Reuse Area
(Tonnes)

Reuse/Recycling



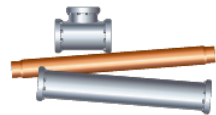
17
Electronic Waste
(Tonnes)



44
Concrete, Brick and Block*
(Tonnes)



130
Other Wood Waste*
(Tonnes)



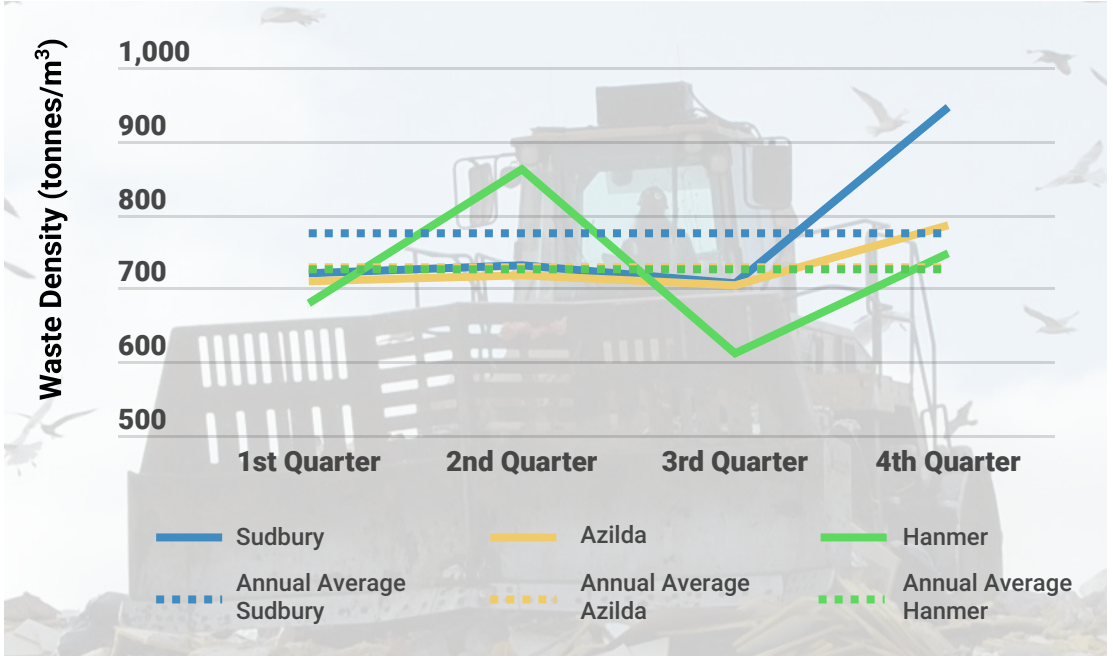
138
Scrap Metal and White Goods
(Tonnes)



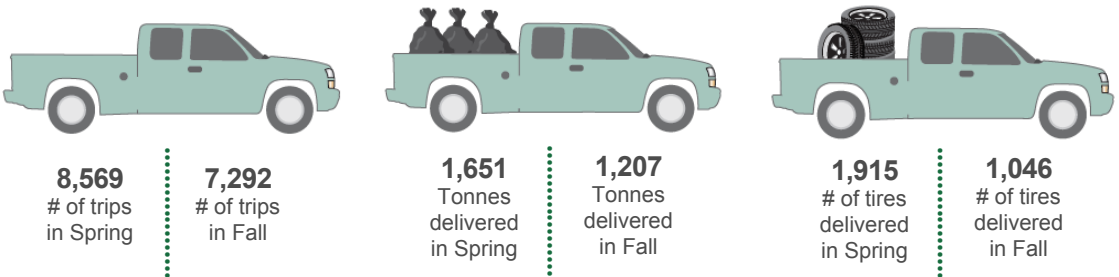
33
Tires
(Tonnes)

* Waste transferred from Walden Transfer Station to Sudbury Landfill

Landfill Quarterly Waste Density Data

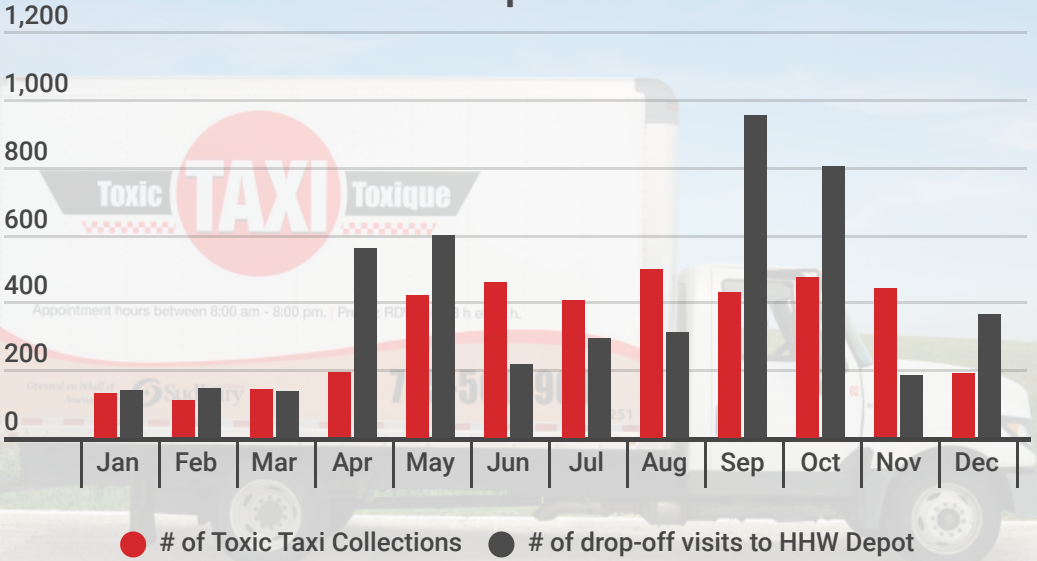


Residential Tipping Fee Holiday Weeks



Household Hazardous Waste (HHW)

Collection/Drop-off Visits



Tonnages Managed



61
HHW Disposed
(Tonnes)



168
HHW Recycled
(Tonnes)

96
HHW Reused
(Tonnes)