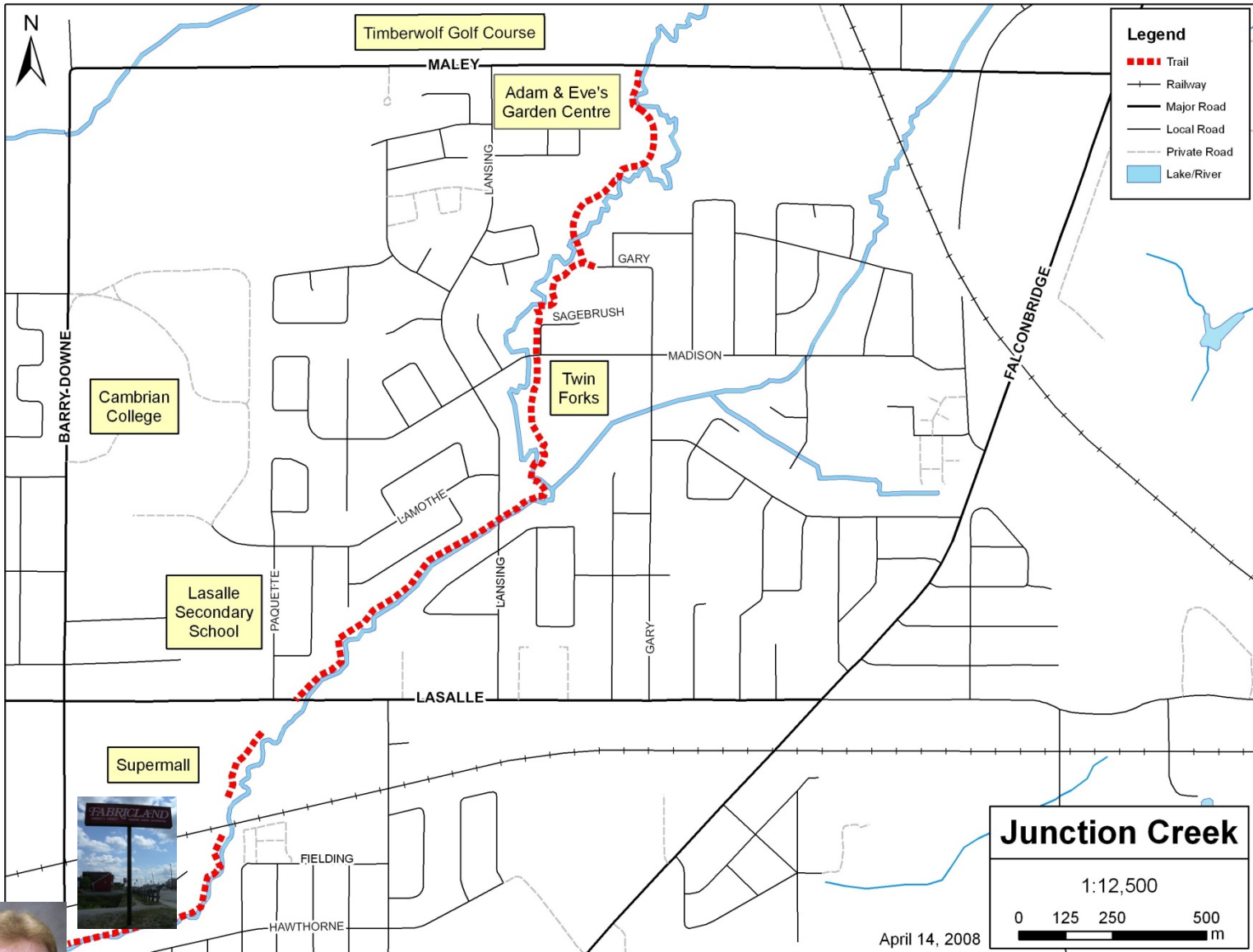




Rainbow Routes
de l'arc-en-ciel
www.rainbowroutes.com

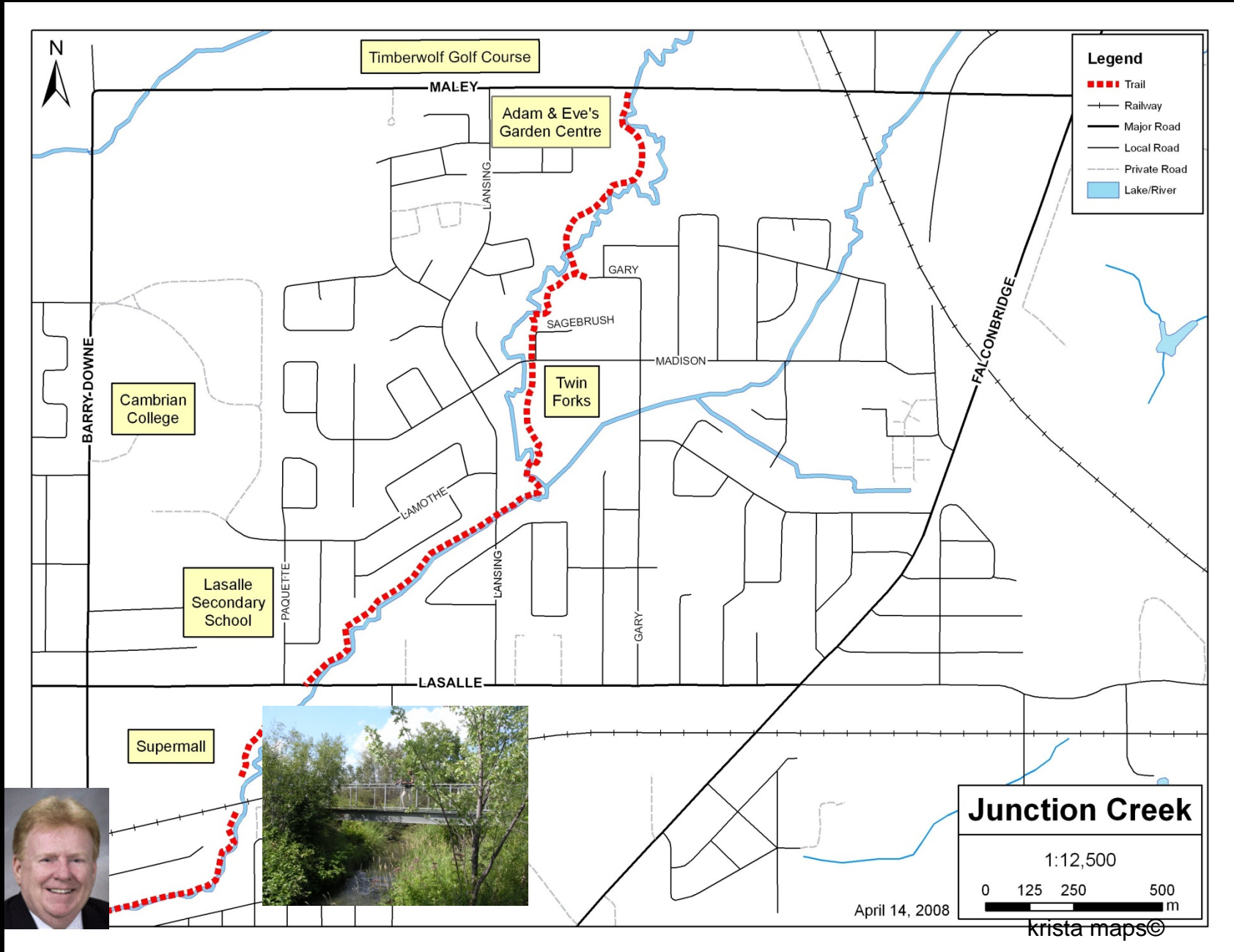
Junction Creek New Sudbury

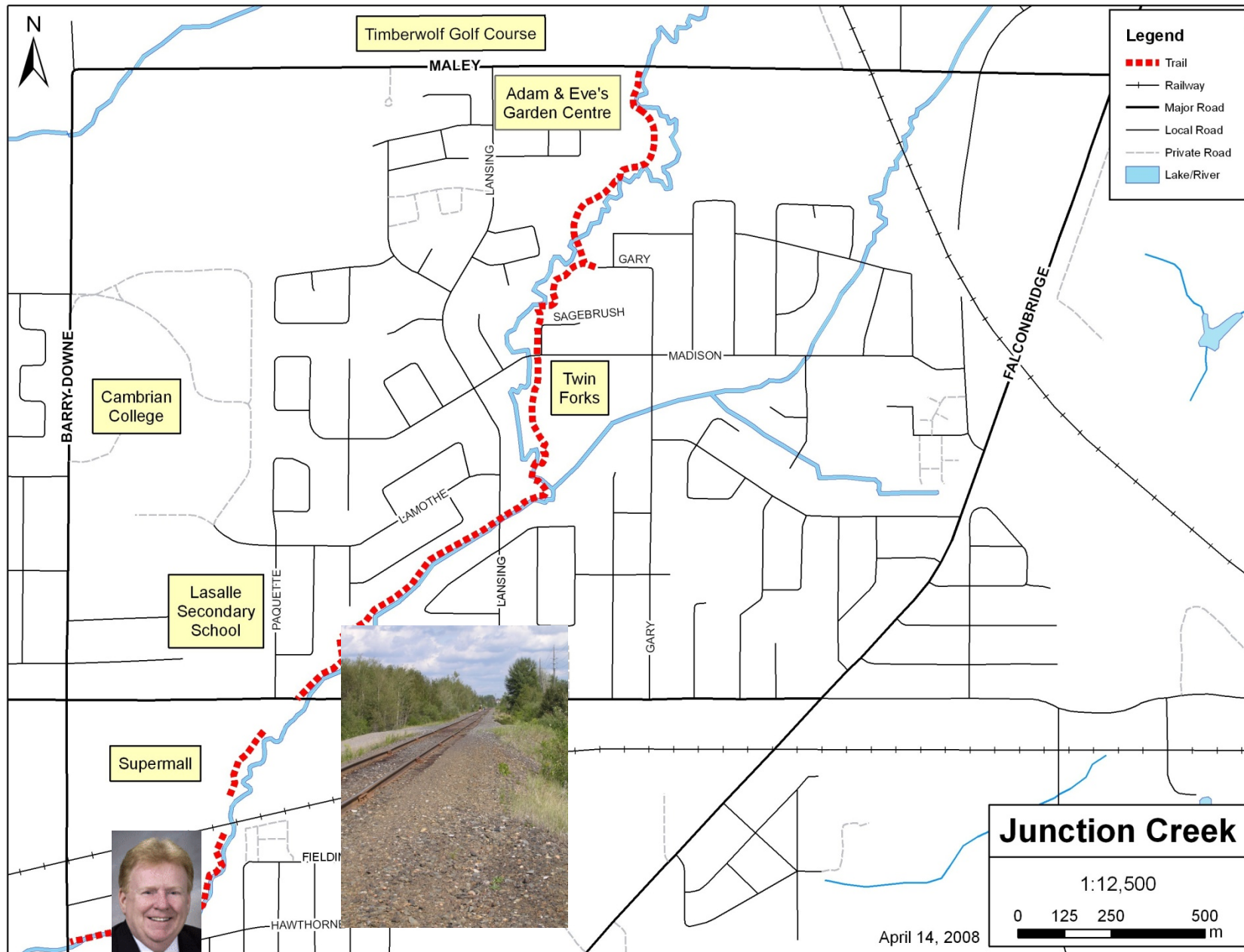




Trail head @ Barrydowne







Yearly Junction Creek Clean Ups





New Trail at Supermall



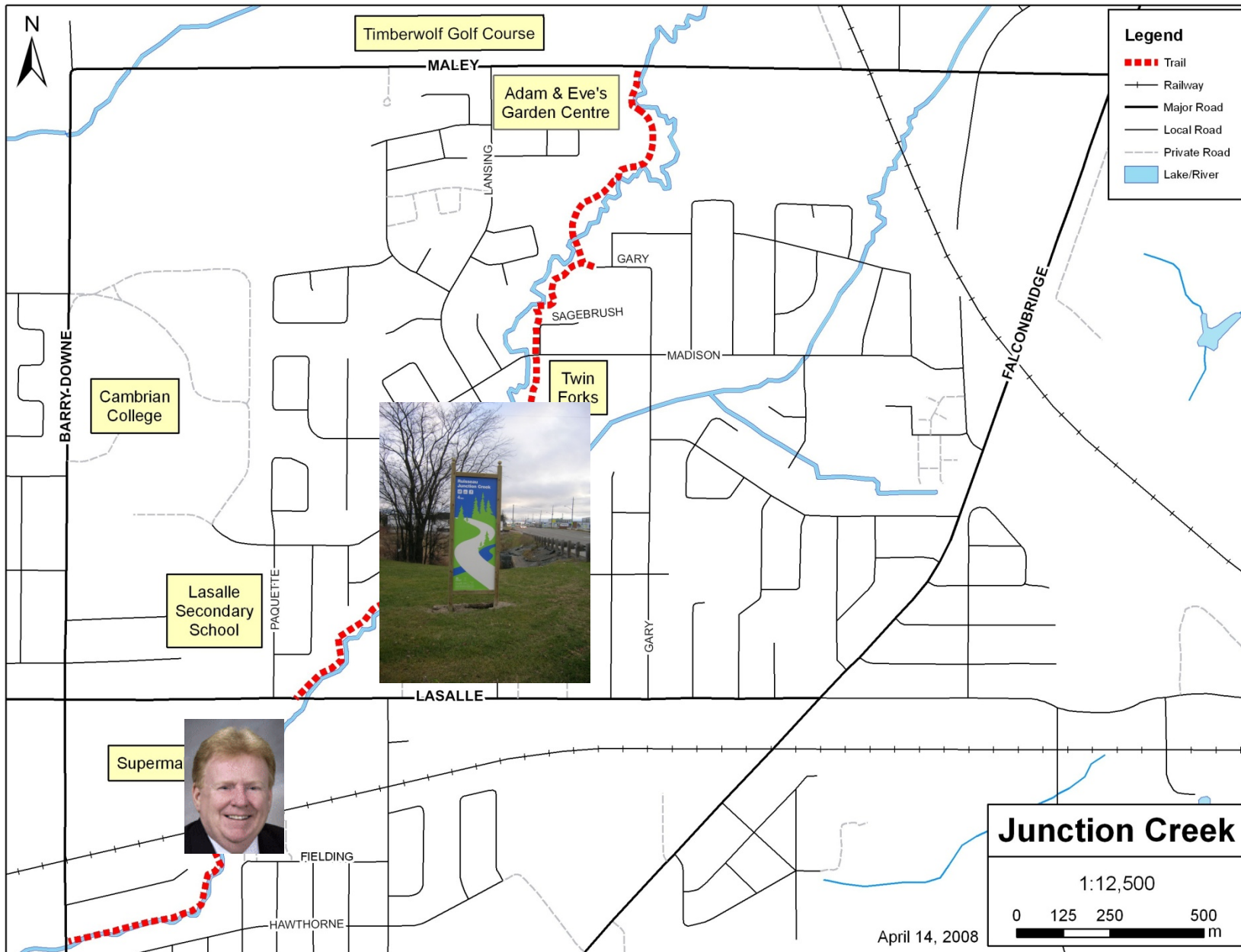
A missing link in the Junction Creek Waterway Park



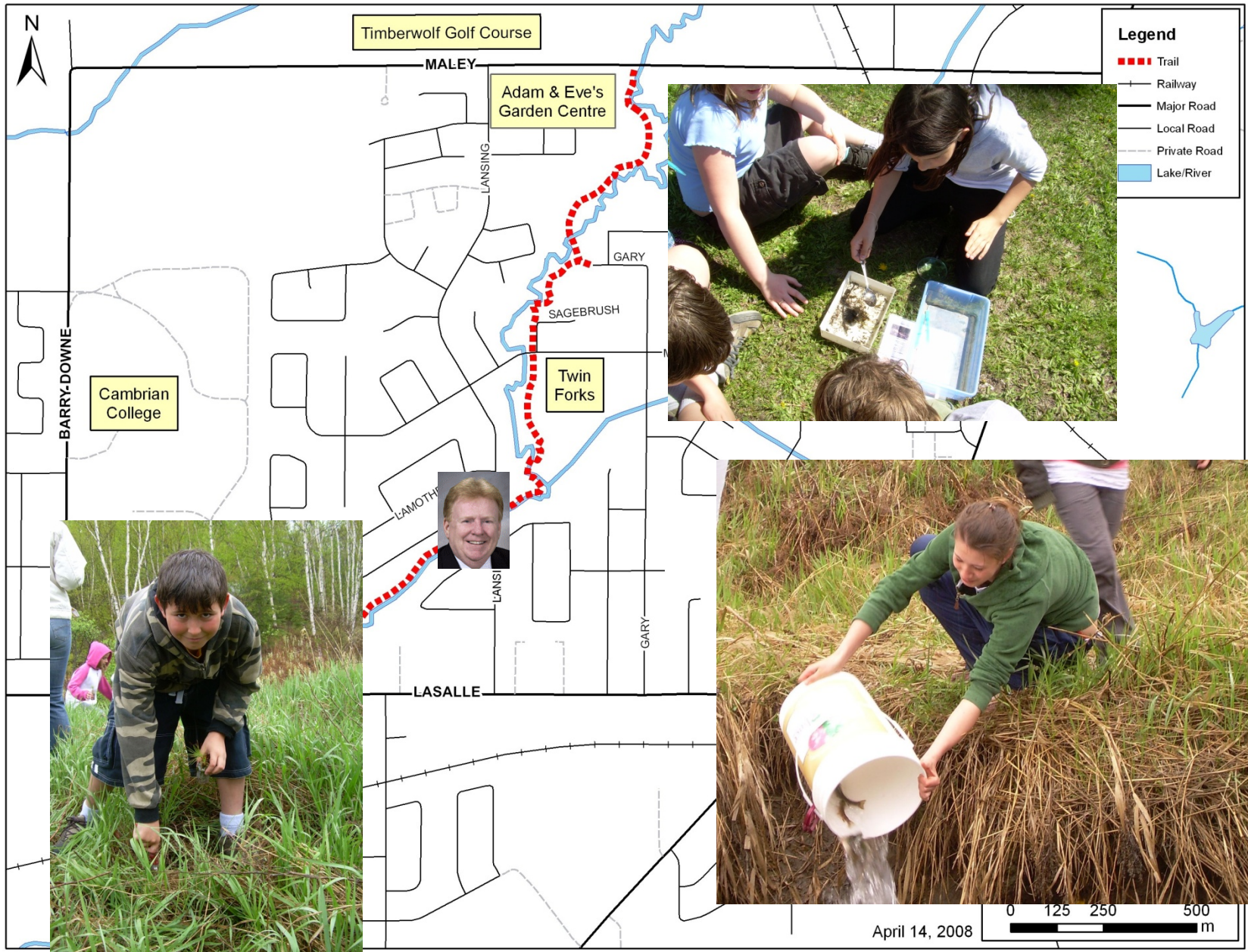
MARG SEREGELY

YUK!

Remains of a car believed to be a 1976 Volkswagen were discovered in Junction Creek off Lasalle Boulevard by members of a work crew led by the Junction Creek Stewardship Committee. Workers used a tow truck to pull up the remains.

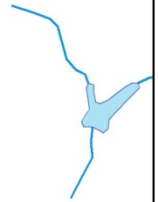




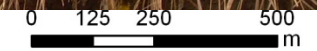


Legend

- Trail
- Railway
- Major Road
- Local Road
- Private Road
- Lake/River



April 14, 2008



krista maps©

Junction Creek Adventures

Junction Creek Adventures: An Ant's Life



Distance: 1.5 km return.

Approximate time: 1hr30

Location: Twin Forks Park on Gary Ave between Madison Ave and Josephine St. Free parking at the Park.

Trail tools: Prepare and gather these tools for each person:

- Antennae (tape pipe cleaners with rounded edges to a headband).
- Third eye (magnifying glass)

Junction Creek Raccoon Robber Challenge



Distance: 2 km return.

Approximate time: 2hr

Location: Twin Forks Park on Gary Ave between Madison Ave and Josephine St. Free parking at the Park.

Trail tools: Prepare and gather these tools for each person:

- Raccoon mask
- Playing cards: Ace through 6 of one suit.
- Vision-blocker (bandana/cloth)



Sagebrush Pedestrian Walkway







Thank you