

# EMERGENCY MANAGEMENT

## Presentation

### Priorities Committee

February 7, 2007

Lynn Fortin

Coordinator of Special Operations (CEMC)



# Emergency Management Introduction

## **Aim:**

To address increasing public safety risks by developing improved community emergency management programs based on international best practices.

The four pillars of Emergency Management are:

- Prevention/ Mitigation
- Preparedness
- Response & Recovery



# Emergency Management and Civil Protection Act

## Bill 56 Royal Assent - June 20, 2006

Upon a Provincial Declaration of Emergency, Bill 56 provides special powers to the Premier

### Premier may:

- Regulate or prohibit travel/movement
- Evacuate individuals/animals
- Establish facilities for the care, welfare, safety, and shelter of individuals
- Fix prices (prohibiting unconscionable price increases)
- Shut down facilities or business (private or public)



# Emergency Management and Civil Protection Act

## Premier's power over municipalities:

- Direct and control the *administration, facilities and equipment* of the municipality in the emergency area
- Require any municipality to *provide such assistance* necessary to an emergency area that is *not within the jurisdiction of the municipality* and *direct and control* the provision of such assistance

# Emergency Management and Civil Protection Act

## When to declare

- Extraordinary emergency circumstances
  - Emergency response capabilities are strained
  - Emergency situation requires extraordinary measures that affect the public

## Declaration of an Emergency

- Emergency exists in the municipality or in any part thereof
- May take such action and make orders to implement the emergency plan
- To protect property and health, safety, and welfare of the inhabitants of the emergency area

# Emergency Management Roles & Responsibilities

## “Head of Council” or the “Acting Head of Council”

- Authorized to make a declaration of emergency
- Ensure members of council, parliament (Provincial & Federal) are kept advised of latest developments
- Request Provincial and/or Federal assistance
- In consultation with CAO & Corporate Communications Officer approve news releases
- Ensure continuity of municipal government

# Emergency Management Roles & Responsibilities

## Role of Community Control Group (CCG)

- Coordinate & direct agency/department services
- Ensure execution of the “Declaration of a State of Emergency”
- Take actions to mitigate the emergency
- Contact and mobilize appropriate emergency response agencies
- Authorize expenditures as approved by council
- Order, coordinate, and oversee evacuation if necessary
- Coordinate all emergency support operations during & post incident

# Emergency Management Essential Level

## Committees

- **Community Emergency Management Program Committee (GSEMP)**
  - Membership consists of stakeholders from industry, community, health care sectors, utilities and City divisions
  - Quarterly meeting, Reviews EM work plan, Provides guidance
- **Public Awareness Program Committee**
  - Quarterly meeting, Emergency Preparedness Week, Education & Awareness
- **Pandemic Clinical Care Committee**
  - Monthly in 2006 – quarterly in 2007
- **Exercise Committee**
  - As required



# Emergency Management Essential Level

## Development and implementation of Community Public Education & Awareness Programs

- Website
- Have it in the Bag Campaign
- Publications & Brochures
- Emergency Preparedness Week



**Always Prepared.**  
**Toujours prêts.** 

Emergency Preparedness    Préparation aux situations d'urgence

[www.greatersudbury.ca](http://www.greatersudbury.ca)    [www.grandsudbury.ca](http://www.grandsudbury.ca)

 **Greater | Grand  
Sudbury**

# Emergency Management Essential Level

## Conduct annual exercise and training



“Exercise Rumble” 2004



“Operation Fluville” 2006



Emergency Control Group  
Table Top Exercise 2005

**Always Prepared.**  
**Toujours prêts.**

Emergency Preparedness    Préparation aux situations d'urgence

[www.greatersudbury.ca](http://www.greatersudbury.ca)    [www.grandsudbury.ca](http://www.grandsudbury.ca)



# Emergency Management Essential Level

## Development of an Emergency Operations Centre

Must have appropriate technology and telecommunications systems to ensure effective communication in an emergency.



Sample EOC for CLELC



Sample Mobile  
Command Centre



**Always Prepared.**  
**Toujours prêts.**



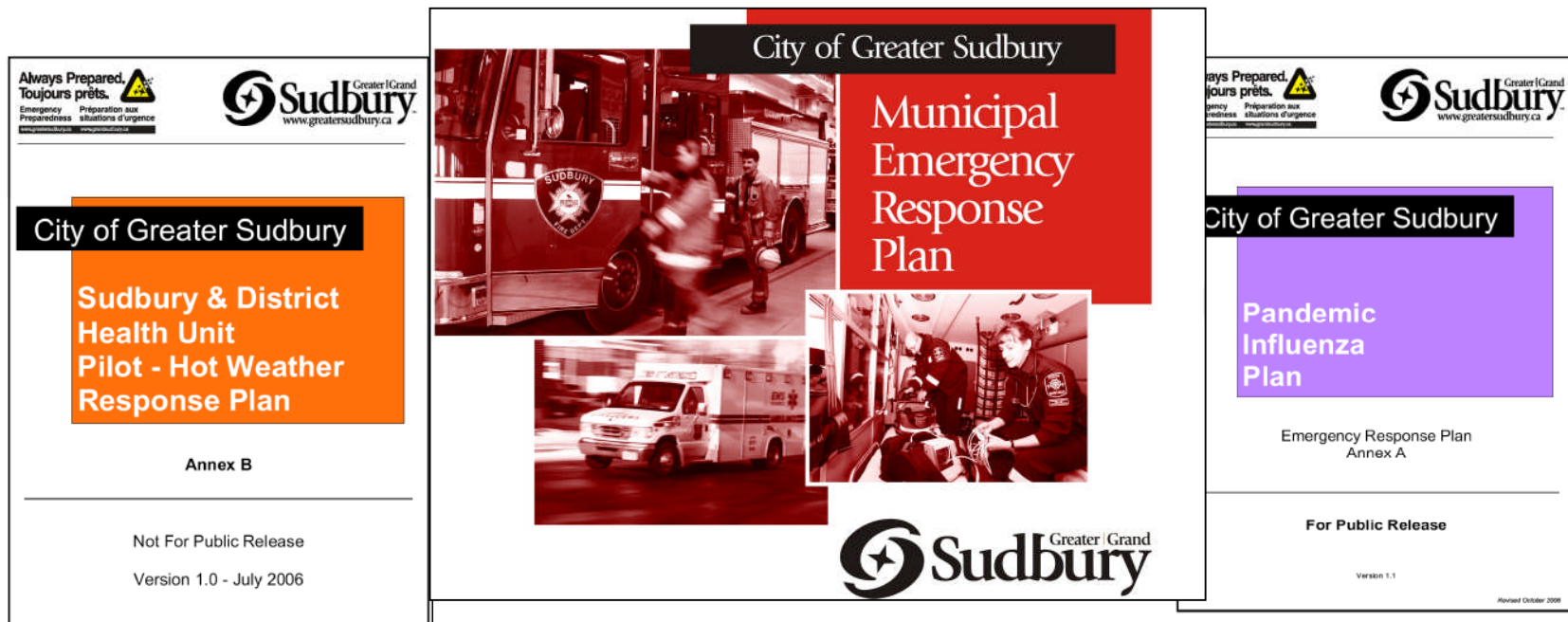
Emergency Preparedness    Préparation aux  
situations d'urgence

[www.greatersudbury.ca](http://www.greatersudbury.ca)    [www.grandsudbury.ca](http://www.grandsudbury.ca)



# Emergency Management Essential Level

## Publication of an approved Municipal Emergency Response Plan





# Emergency Management Essential Level

## Hazard Identification & Risk Assessment (HIRA)

### EVENT RATING - 2006

Hazardous Materials (Hazmat) – Chemical	15
Hazardous Materials Incident – Fixed Site	15
Hazardous Materials Incident – Transportation	15
Energy Emergencies – Hydro	13
Human Health Emergencies and Epidemics	13

### Incidents in 2006

Windstorm & power outage (July)

Ammonia leak - Northern Breweries (Aug)

# Emergency Management

## JEPP 2006/07

Received approval for:

- Back up generator - \$10,000
- Telecommunications equipment - \$50,000
- Table Top Exercise - \$4,500
- EOC software - \$10,000
- EOC design consultant - \$6,300

## JEPP 2007/08\*

Application submissions:  
(funding dollars requested)

- Evacuation Centre generator - \$10,000
- CBRN breathing equipment - \$80,434.36
- Mobile command unit - \$40,000

\*Pending approval confirmation

**Always Prepared.**  
**Toujours prêts.**



Emergency Preparedness    Préparation aux situations d'urgence

[www.greatersudbury.ca](http://www.greatersudbury.ca)    [www.grandsudbury.ca](http://www.grandsudbury.ca)



# Emergency Management Activity 2006

## **Kashechewan Evacuation Apr – Jul '06**

- Spring coastal flooding forced the evacuation of 400 residents on April 27, 2006
- Knight's Inn & Travelodge - Sudbury; Stays Inn - Lively; Millennium Centre – Capreol

## **Northwestern Ontario Forest Fire Evacuation Sept 15th - Sept 20th**

- Smoke from forest fires forced the evacuation of 800 residents
- 216 evacuees were housed in Greater Sudbury
- Travelodge, Sudbury; Stays Inn, Lively; Millennium Centre, Capreol

# Emergency Management Activity 2006

## Pioneer Manor Fire October 26th, 2006

- EM provided integrated command & control on site
- Coordinated Business Cycles
- Provided support & resources to Pioneer Manor staff, Fire, Police, EMS, Public Works, Transit, Red Cross



**Always Prepared.**  
**Toujours prêts.**



Emergency Preparedness    Préparation aux situations d'urgence

[www.greatersudbury.ca](http://www.greatersudbury.ca)    [www.grandsudbury.ca](http://www.grandsudbury.ca)





## GAP

### Public Emergency Evacuation Centre

- Must be Red Cross approved
- In the event of a power outage, daily requirements for lighting, heat/cooling ventilation require a back up generator
- Fulfill five (5) Emergency Social Services Criteria
  - lodging,
  - clothing,
  - food,
  - personal care,
  - registration and inquiry

## Emergency Management

### Dowling Evacuation Centre maximum occupancy 200



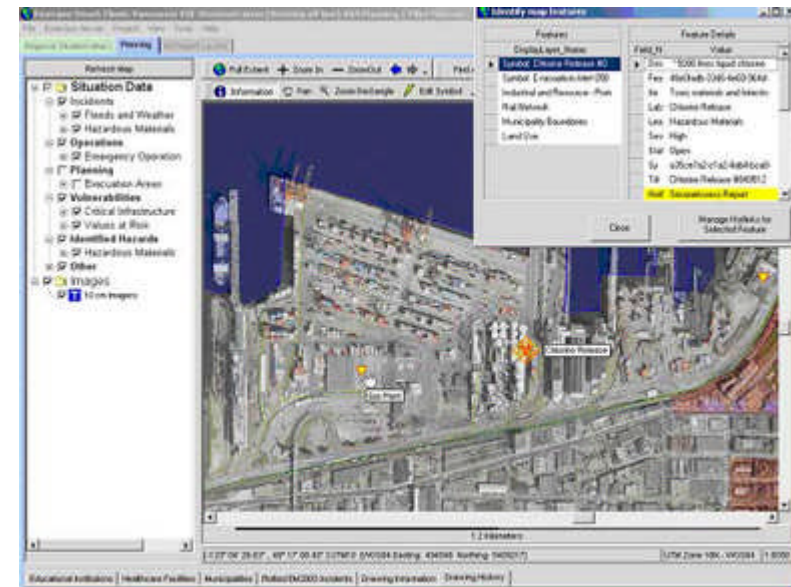
Generator installed to provide backup power

# Emergency Management

## GAP

## Crisis Information Management System

- System designed to deliver real-time emergency information to any size EOC or exchange information between multiple sites, users and the emergency site.
- Link telephones, radios, intranet, internet, voice teleconferencing, video, plume modeling, mapping and weather systems



## Emergency Management Next Steps (2007 – 2009)

### Comprehensive Level Program

What:

- Create a disaster-resilient community
- Mitigate risks
- Minimizes vulnerabilities
- Minimize impacts on people, property & the economy

How:

- Development of a prevention/mitigation strategy
- Recovery plan for identified high risks
- Plan for identified high risks

## Climate Change Impacts on Sudbury

## Emergency Management Next Steps (2007 – 2009)

- Extreme weather events could occur more often
  - Freezing rain
  - Heat waves
  - Flash floods
  - Droughts
  - Snowstorms
- Variability in wet and dry periods
  - Droughts: summer and fall low flows may be lower and longer
  - Heavy rain or snow
- Alterations in air, water and soil quality

Source: Laurentian University Climate Change adaptation Project



# Emergency Management Next Steps (2007 – 2009)

## Comprehensive Level Program

- Designation of dangerous goods routes
- Risk-based public education program based on identified risks
- Comprehensive community evacuation plan
- Incident Management System

# Emergency Management Challenges

## Comprehensive Level Program

- Public Education / Self Preparedness
- Community Expectation vs Reality
- No Annual Capital Funding
- Commitment and Support of Council to the City's development of a Comprehensive Level Program

# Comments/Questions?

**Always Prepared.**  
**Toujours prêts.**



Emergency Preparedness    Préparation aux situations d'urgence

[www.greatersudbury.ca](http://www.greatersudbury.ca)    [www.grandsudbury.ca](http://www.grandsudbury.ca)

