



# Junction Creek Rehabilitation & Reprofiling

Junction Creek Stewardship Committee AGM  
May 21, 2025



# Project Overview

- This project includes drainage and infrastructure improvements to Junction Creek from Lloyd Street to approximately 130 north of Perrault Street.
- The City of Greater Sudbury has retained AECOM to complete the design of the improvements and to oversee construction.
- Total project cost \$17 million
  - This project is funded in part by the Government of Canada through the Disaster Mitigation and Adaptation Fund (\$10 million)

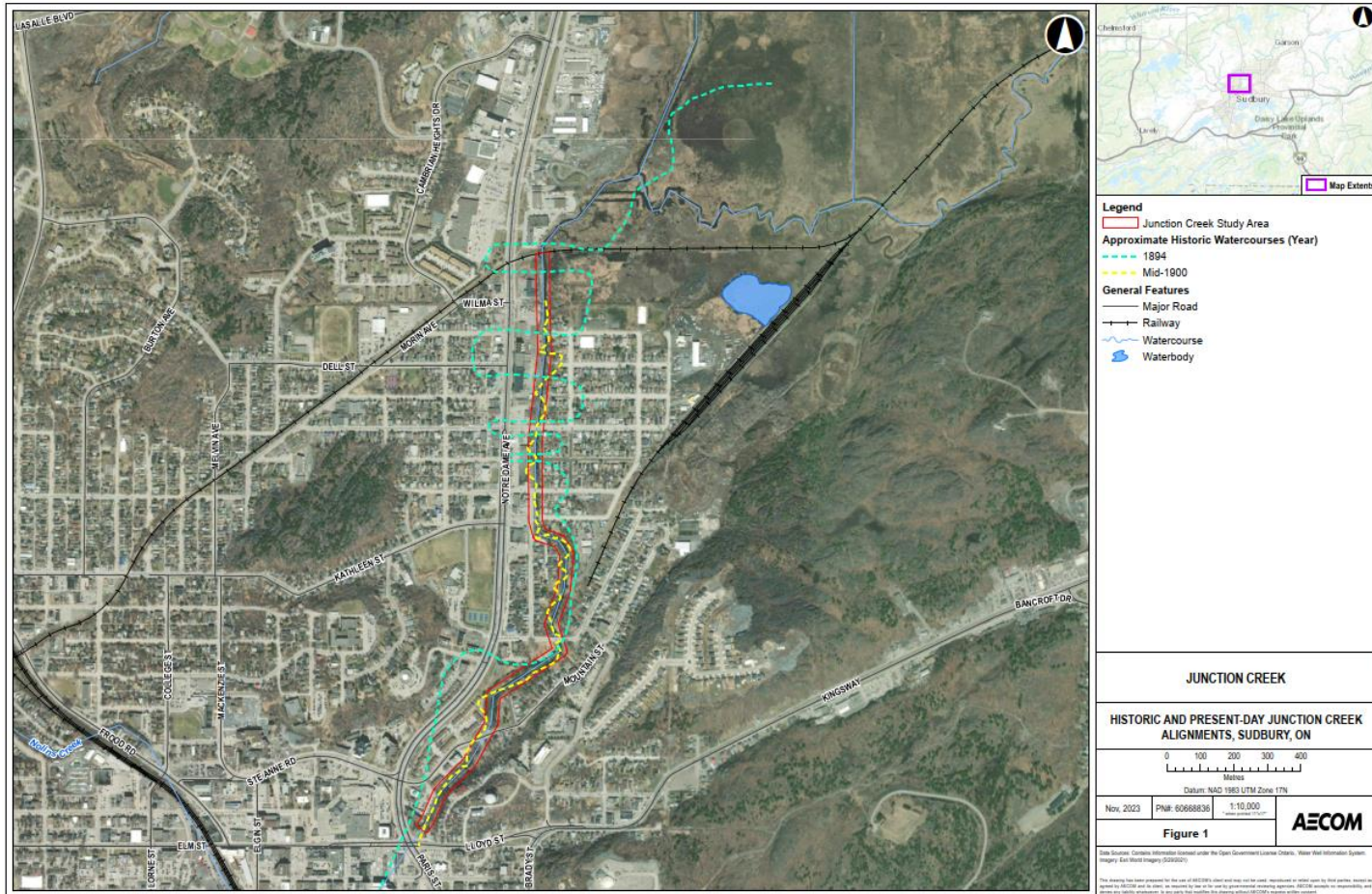


[greatersudbury.ca/construction](https://greatersudbury.ca/construction)





# Historical Junction Creek Alignment



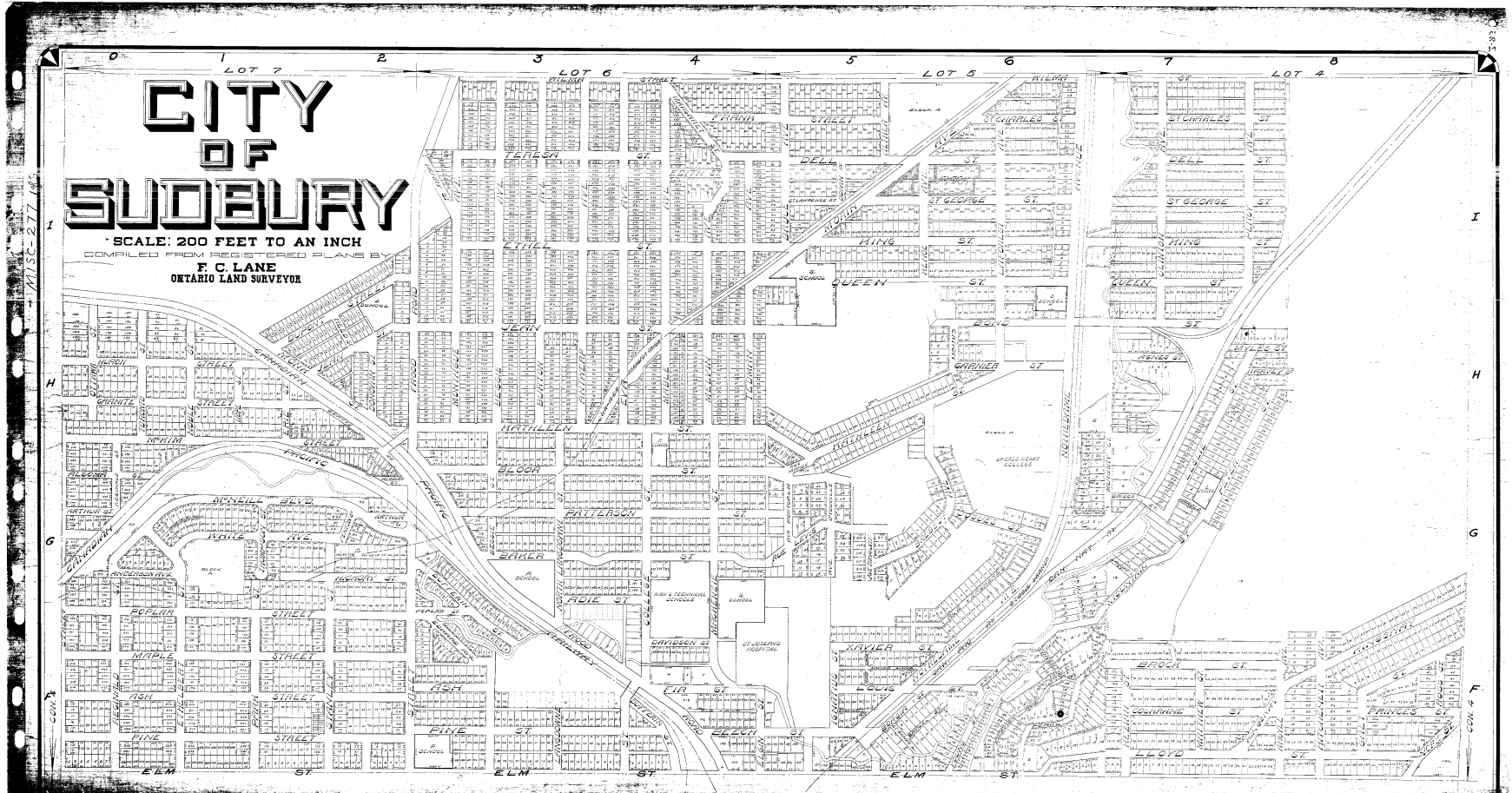
[greatersudbury.ca/construction](https://greatersudbury.ca/construction)



**Greater Sudbury**

**311**  
services

# Historical Junction Creek Alignment



[greatersudbury.ca/construction](http://greatersudbury.ca/construction)

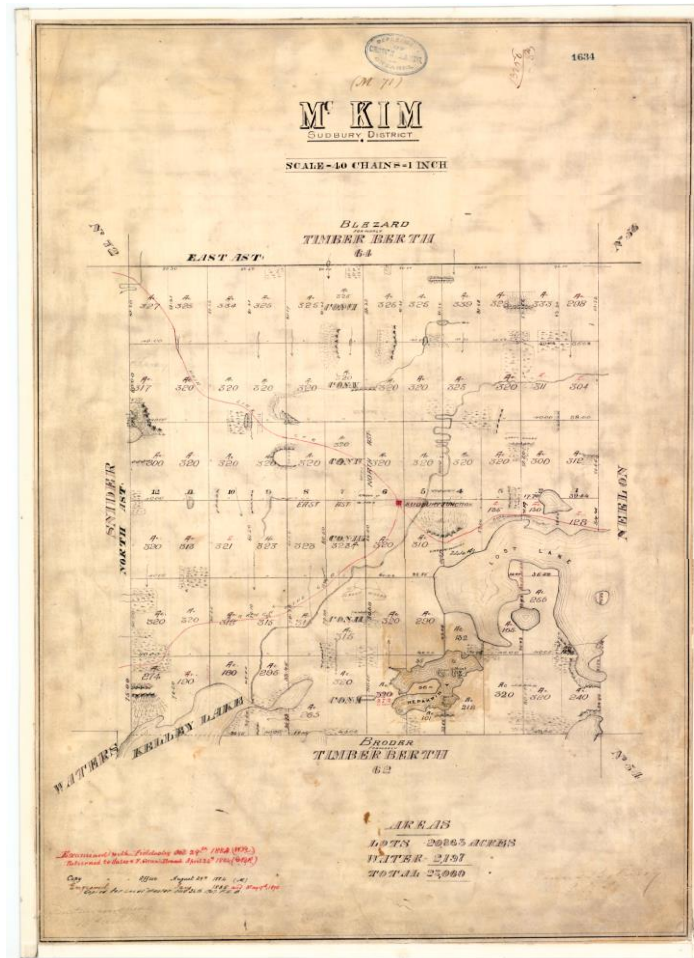


 Greater Sudbury

 311  
services



# Historical Junction Creek Alignment



[greater Sudbury.ca/construction](http://greater Sudbury.ca/construction)

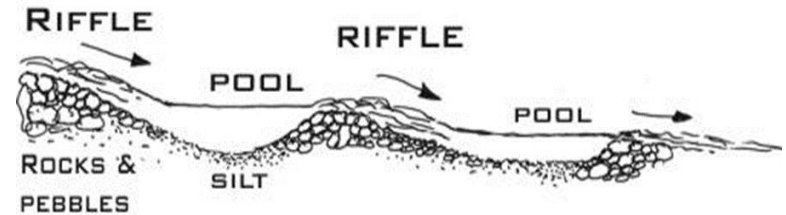


Greater Grand Sudbury

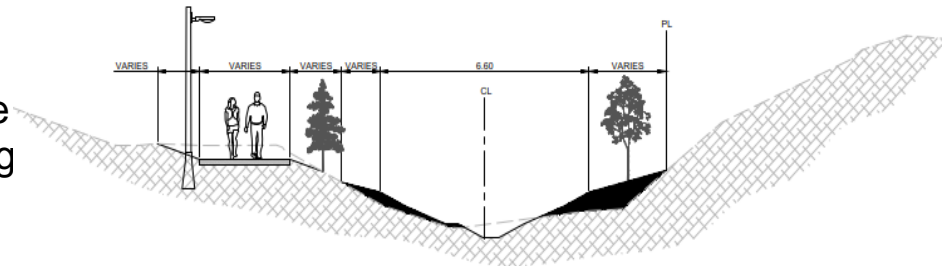


# Planned Improvements

- Reduce frequency of flooding on Notre Dame Avenue, Perreault Street and other streets ensuring existing City storm sewers can outlet into the creek effectively
- Removing the layer of silt and other materials that have built up over time and replace with plants and other materials to improve natural habitat for creek species
- Upgrade adjacent infrastructure to increase resiliency of culverts, storm sewer, retaining walls and fences along the creek
- Improve the aesthetics and accessibility of the Junction Creek Waterway Park trail, where possible



Proposed Creek Bottom Profile



Proposed Typical Cross Section



# Environmental Mitigation Measures

- The City and project consultant are continuing to work closely with the contractor (Denis Gratton Construction) and regulatory agencies (i.e. Conservation Sudbury, DFO, MNRF etc.) to mitigate any negative environmental impacts to the creek and its species, to the greatest extent possible.
- This includes such things as:
  - Completing project work only during designated bird and fishery timing windows
  - Fish rescue will be completed as part of creek excavation work
  - Turtle exclusion fencing will be installed prior to construction
  - some combination of silt fencing, turbidity curtains, straw bales, and/or erosion control blankets to reduce turbidity to the extent possible



[greater Sudbury.ca/construction](https://greater Sudbury.ca/construction)



 **Greater Sudbury**

 **311**  
services



# Project Benefits

- Creek bed sediment that has built up over many years will be excavated to restore the engineered bottom elevation to reduce flood risk and enhance stormwater management.
- Creek banks will be re-graded to improve slope stability and help to reduce the impacts of erosion.
- Invasive plant species will be removed where possible and replaced with plant species native to the area.
- Fish habitat will be enhanced with the introduction of deep pool areas and a new rocky bottom to the creek bed.
- Existing municipal infrastructure for water, sanitary and stormwater services within the construction limits will be relocated or improved to reduce impacts to the creek along with access upgrades for future maintenance.
- The Junction Creek Waterway Park trail will be restored upon completion of construction.



[greatersudbury.ca/construction](http://greatersudbury.ca/construction)



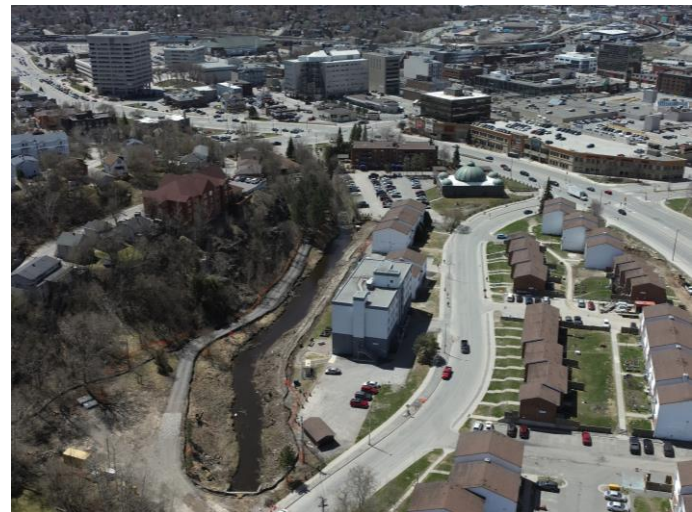
 **Sudbury** Greater | Grand

 **311**  
services



# Current Status and Progress to Date

- Phase 1 work area to extend from the Lloyd Street box culvert to 150 metres north of Leslie Street Bridge
- Tree clearing has been completed for the Phase 1 area and the excavated soil storage site between Mountain Street and King Street
- Turtle exclusion fencing installed along the Phase 1 area adjacent to the creek and at the work limits
- Construction access roads are progressing; construction materials are being delivered to site and stockpiled
- Leslie Street bridge structural improvements underway to accommodate a watermain relocation to the underside of the bridge
- MNRF work permit in-water work construction window has been amended to allow construction to proceed from June 16<sup>th</sup> to April 1<sup>st</sup>
- Denis Gratton Construction to continue work until winter freeze up



# Community Engagement / Communication

- Public Information Meeting - July 2024
- Presentation to Flour Mill Community Action Network (CAN)
- Presentation to Flour Mill CAN and the Louis St. Resident's Association
- Construction notices delivered to adjacent and affected residents, as required
- Public Service Announcements regularly issued for changes to traffic or for other operational interruptions
- City Social Media channels used to share PSAs





# Where to find Project Information:

Visit [www.greatersudbury.ca/construction](http://www.greatersudbury.ca/construction) **anytime** for the most up-to-date project information available.

Should you have any further questions or comments regarding the ongoing project:

- Call 311 anytime

**OR**

- Contact project manager directly:

Kevin Reynish, Project Manager

City of Greater Sudbury

[Kevin.Reynish@greatersudbury.ca](mailto:Kevin.Reynish@greatersudbury.ca)

705-674-4455 ext. 3613

705-919-289



[greatersudbury.ca/construction](http://greatersudbury.ca/construction)

