



*Junction Creek
Stewardship Committee*

*Comité d'intendance
du ruisseau Junction*

Request for Funding from the 2013 City of Greater Sudbury Budget
(handout complimentary to presentation)

Projected Benefits:

The Junction Creek Stewardship Committee was founded in 1999 to facilitate the rehabilitation of Sudbury's main urban waterway and surrounding land into a natural and valued asset for the community. The committee serves to co-ordinate citizen participation in environmental restoration activities and to increase public awareness and appreciation of Junction Creek by carrying out a variety of programs. Having a full-time Coordinator for the JCSC is absolutely essential to ensure the continuation of these community programs, such as:

- **Educational Programs: (offered free of charge to schools and community groups)**
 - *Bug Search Program:* Over 6146 students from Greater Sudbury have participated in our "Bug Search" bio-monitoring program.
 - *FrogFind Program:* Over 1498 students in the Junction Creek Watershed have participated in our interactive FrogFind workshop, a project being run in partnership with the City of Greater Sudbury
 - *Thousands of students have participated in our workshops at events such as Roots & Shoots, Children's Water Festival, Garson Community Family Fun Day, Heritage Fun Fair, etc.*
- **Community Stewardship Programs:**
 - *Adopt-a-Creek Program:* 15 community groups have "adopted" a section of Junction Creek, taking responsibility for on-going garbage cleanups in their area and tree plantings in "cleaner" sections.
 - *Garbage Cleanups:* Over 4000 community volunteers have removed more than 71,225kg of garbage from the creek since 1999.
 - *Creek Friendly Carwash Program:* Several community groups have participated in this new program that uses a Latimat© containment device to collect soapy water at charity carwashes so it can be treated and disposed of safely, rather than having it enter the creek via storm drains.
- **Environmental Programs:**
 - *Brook Trout Release:* 17,700 Brook trout have been released into the creek since 2000, in partnership with the Ministry of Natural Resources.
 - *Water Quality Monitoring:* Junction Creek staff, in partnership with VALE, monitors the water quality in Junction Creek every month. In addition, an inventory and preliminary sampling of storm drains flowing into Junction Creek was completed to determine areas in need of improvement.
 - *Shoreline Restoration:* 200 meters of eroding shoreline have been stabilized by log-boulder and willow structures; as well as 34,221 native trees and shrubs have been planted along the creek with the help of community volunteers.

Past successes and Current successes:

- Junction Creek Clearwater Revival – a 15 min. feature film that speaks of the industrial history of Greater Sudbury and Junction Creek and the regreening movement that subsequently followed. Has been shown to thousands of students in the Junction Creek Watershed and overseas with international stewardship groups.
- Turtle Project: Conducting core research and engaging Greater Sudbury citizens to learn more about turtles in the Junction Creek Watershed, including Snapping and Blandings turtles that are both on the Ontario Species at Risk list.
- Pond Project – an ongoing project that has seen the construction of three water ponds and replanting of native species to improve fish habitat in a section of the creek.
- Thanks to the Committee's continued restoration efforts, Brook Trout can now survive in Junction Creek, a feat that seemed almost impossible 13 years ago.
- The JCSC has been collecting rigorous scientific data on biological, chemical and physical features since 2001, which will be available to the City of Greater Sudbury to conduct a future watershed study if they so wish so. Junction Creek has been ranked sixth in the City's official plan that calls for watershed studies on several urban and suburban lakes.
- Long term data collected by the Junction Creek Stewardship Committee have been shared with all levels of government and used in ongoing investigations or concerns of Junction Creek.

Enclosure: Past activities in each Ward.

Ward 1

Some highlights from your Ward:



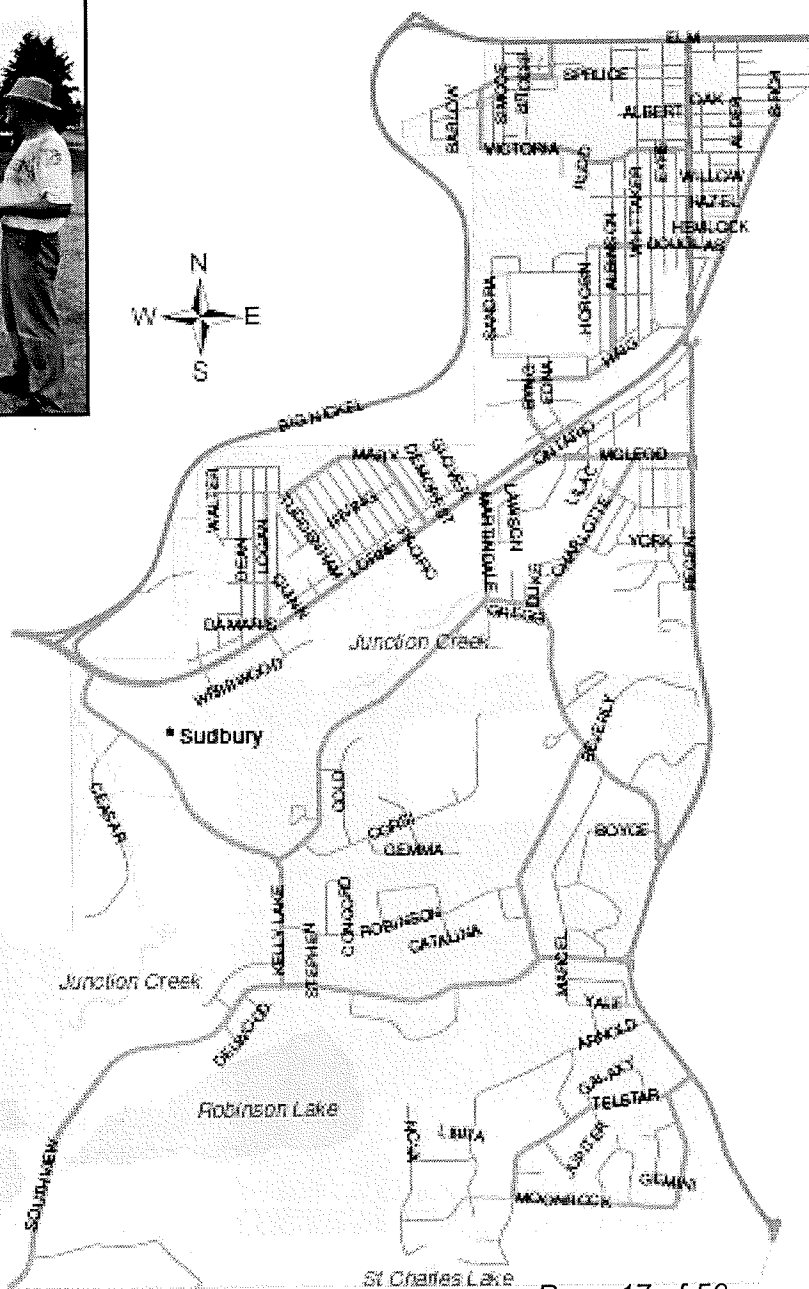
Creek cleanup with Ward 1 CAN



TD Tree Days Planting Event

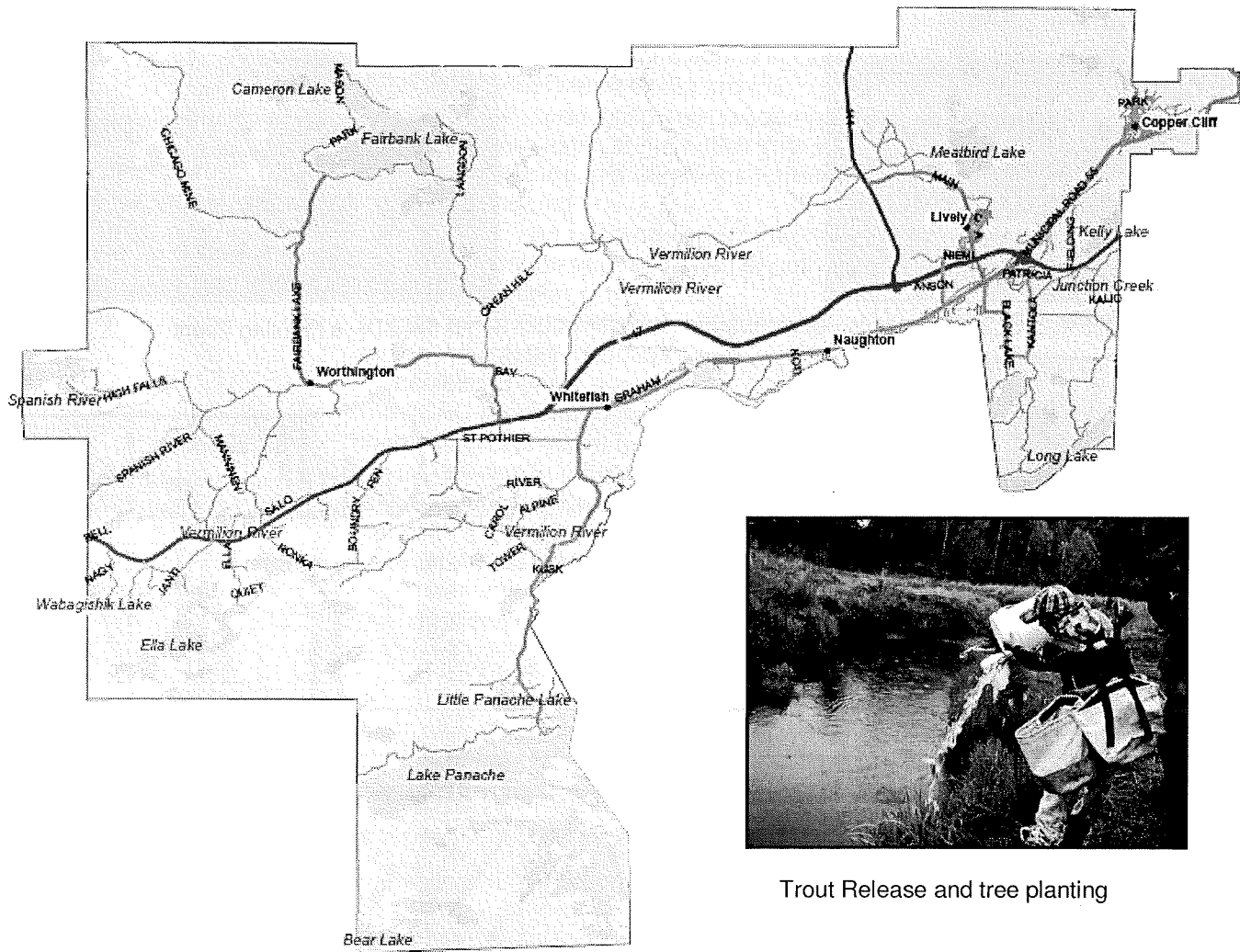


Erosion Control Project



Ward 2

Some highlights from your Ward:



Trout Release and tree planting

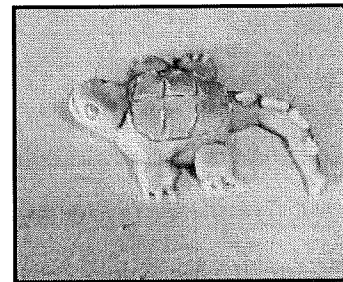
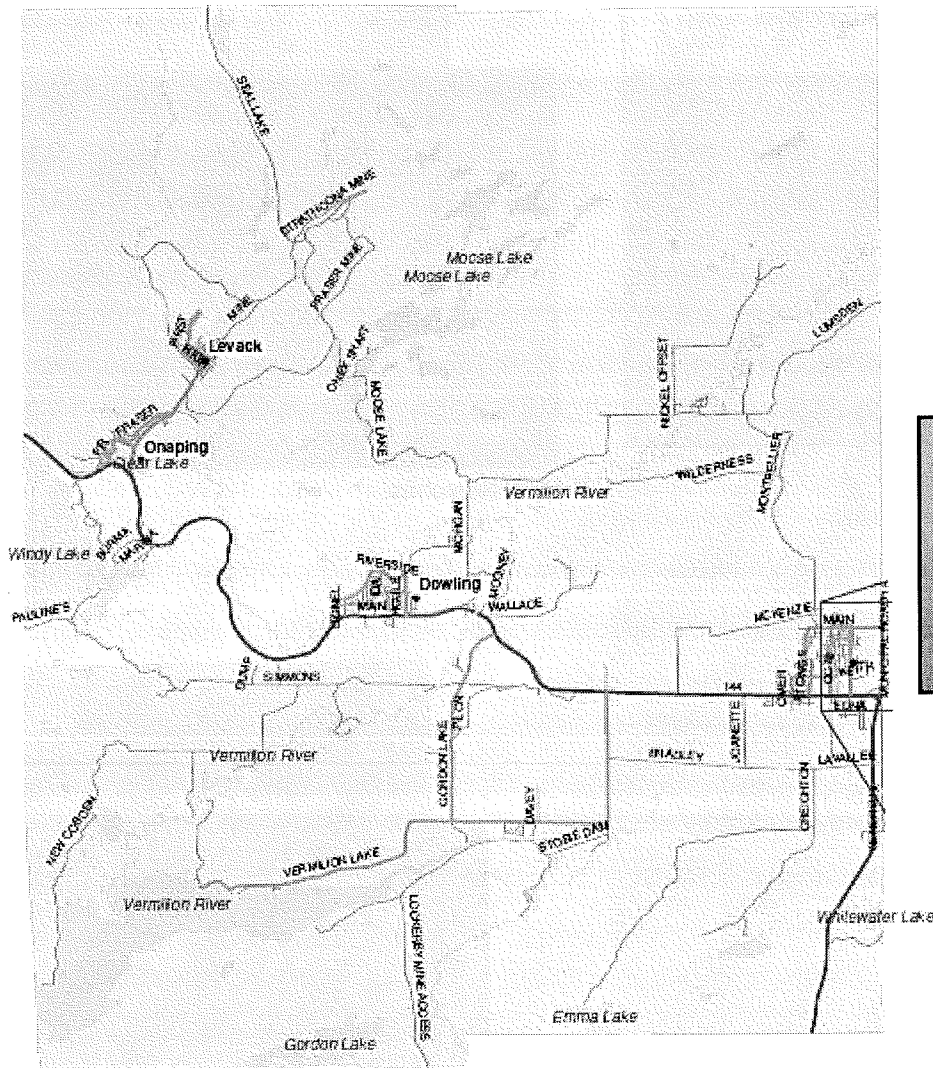


Presentations at the Children's Water Festival



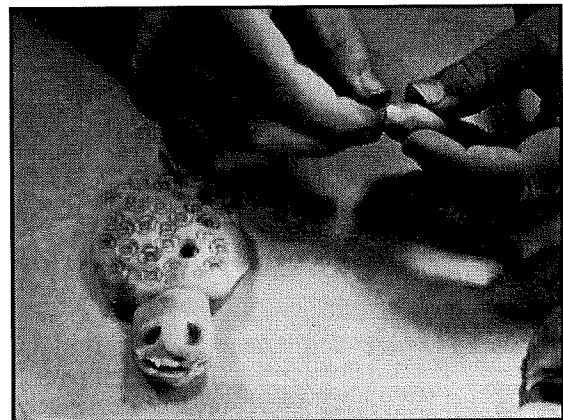
Ward 3

Some highlights from your Ward:



Bug Search Presentation

Turtle Watch Presentation and workshop



Ward 4

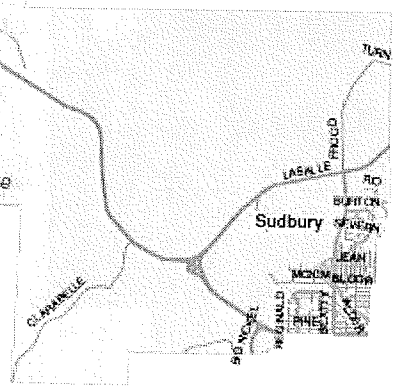
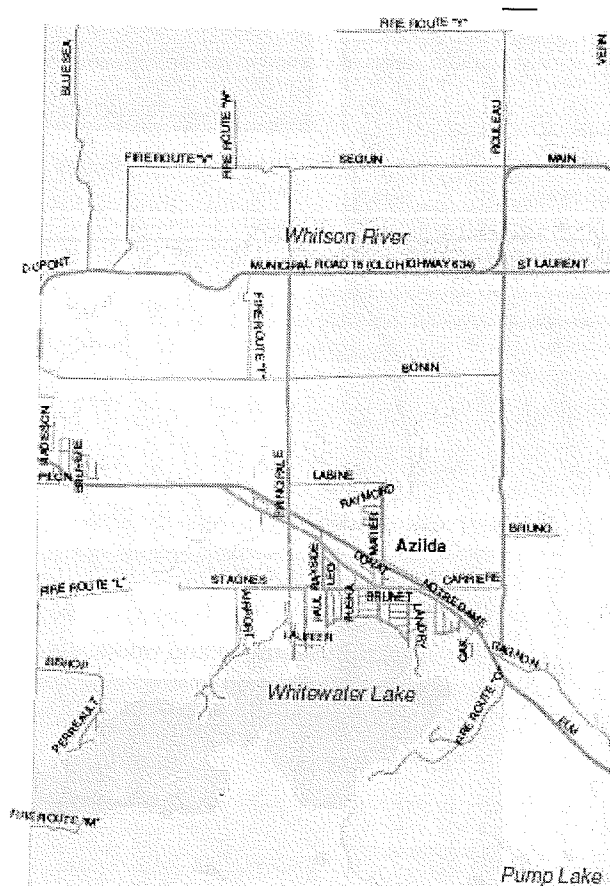
Some highlights from your Ward:



Cleanups



Bug Searches



Ward 5

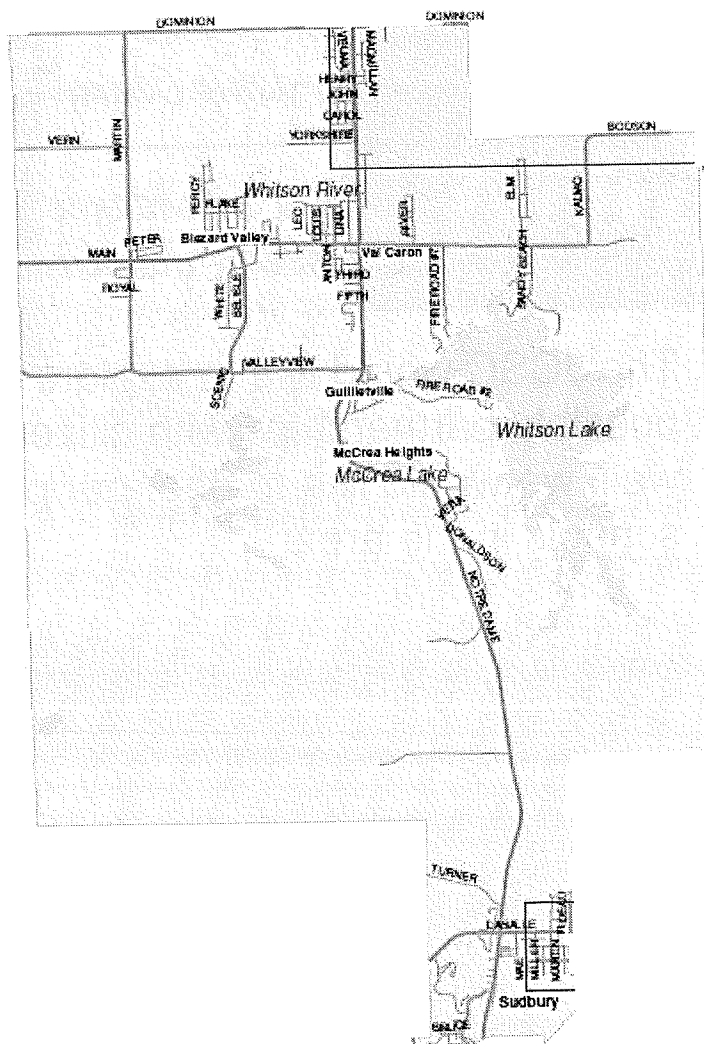
Some highlights from your Ward:



Bioengineering Root Wad Structure



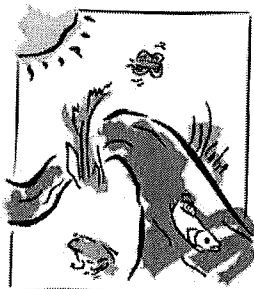
TD Tree Planting Event



Fish Habitat Restoration "Pond Project"

Ward 6

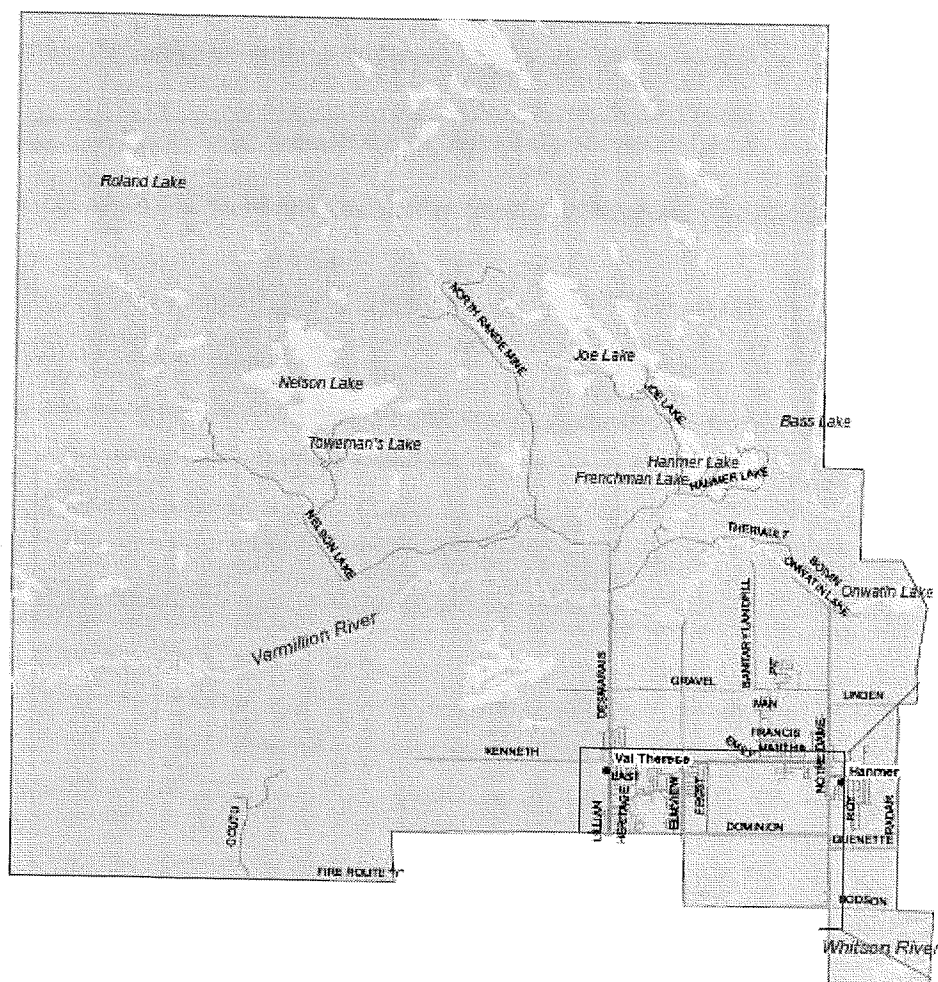
Some highlights from your Ward:



*Junction Creek
Stewardship Committee*

Comité d'intendance
du ruisseau Junction

The JCSC would like to explore and pursue possible partnerships with citizens in Ward 6. As well, we would like to offer our programs to schools in the area.

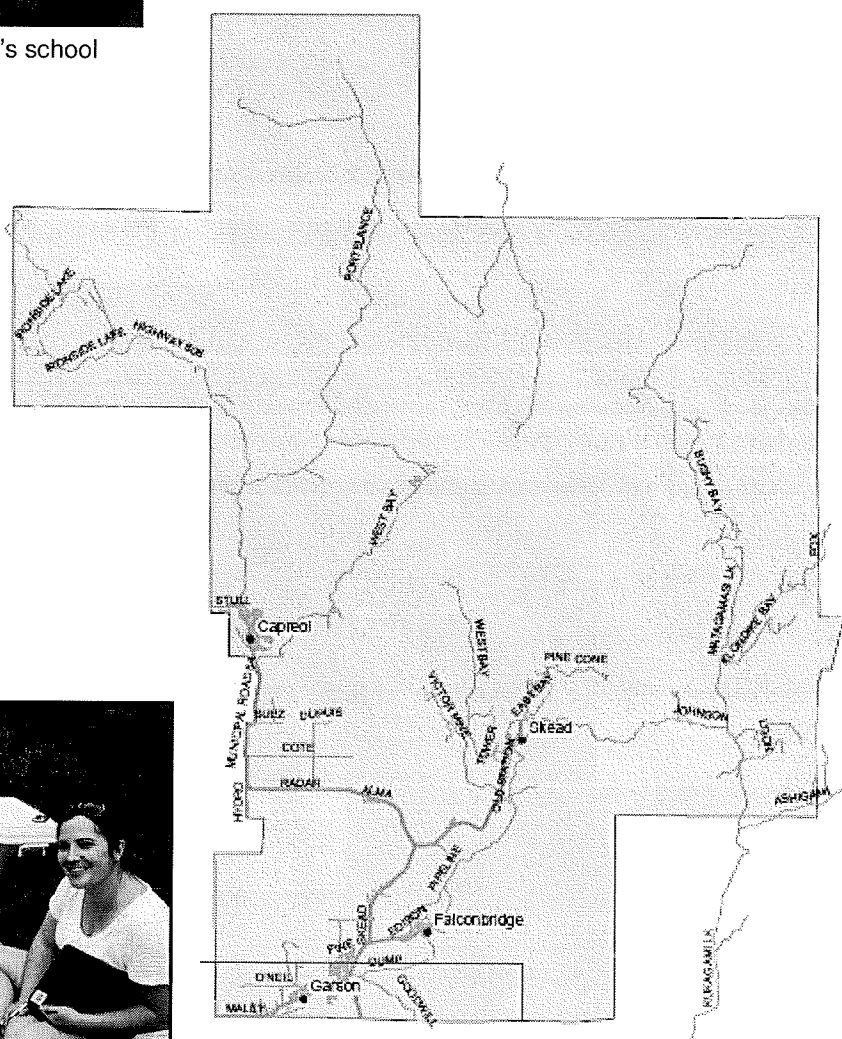


Ward 7

Some highlights from your Ward:



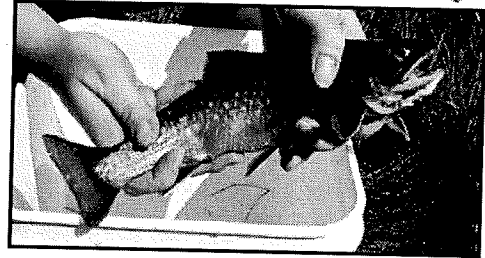
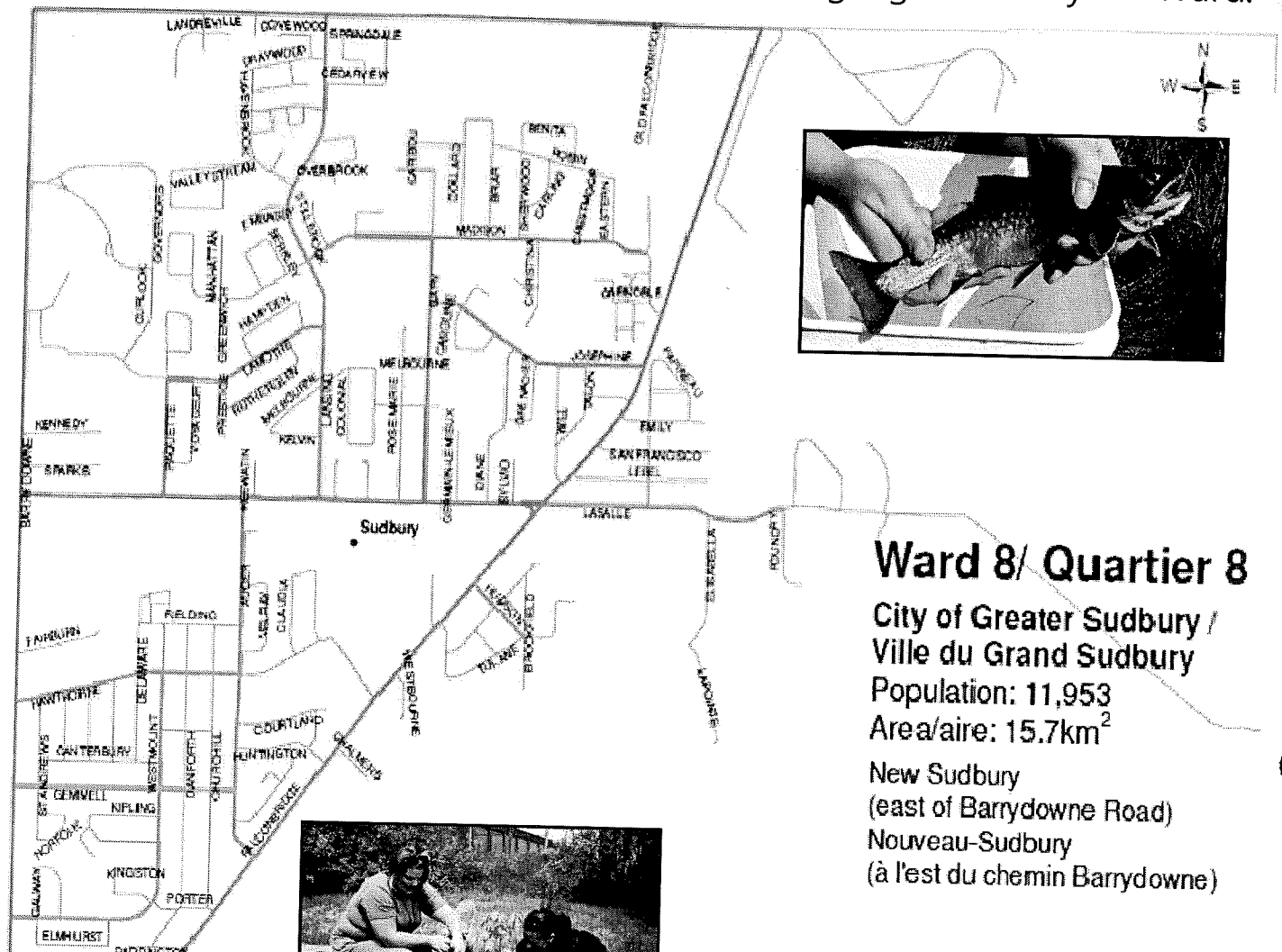
Roots & Shoots planting at St. John's school



Adult Bug Search presentation

Ward 8

Some highlights from your Ward:



Ward 8/ Quartier 8

City of Greater Sudbury /
Ville du Grand Sudbury

Population: 11,953

Area/aire: 15.7km²

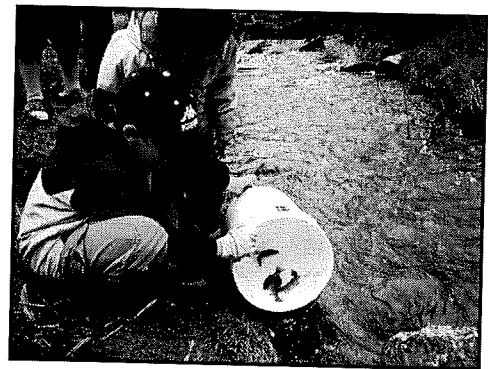
New Sudbury
(east of Barrydowne Road)
Nouveau-Sudbury
(à l'est du chemin Barrydowne)



Tree planting events



Spring Cleanup behind Superstore



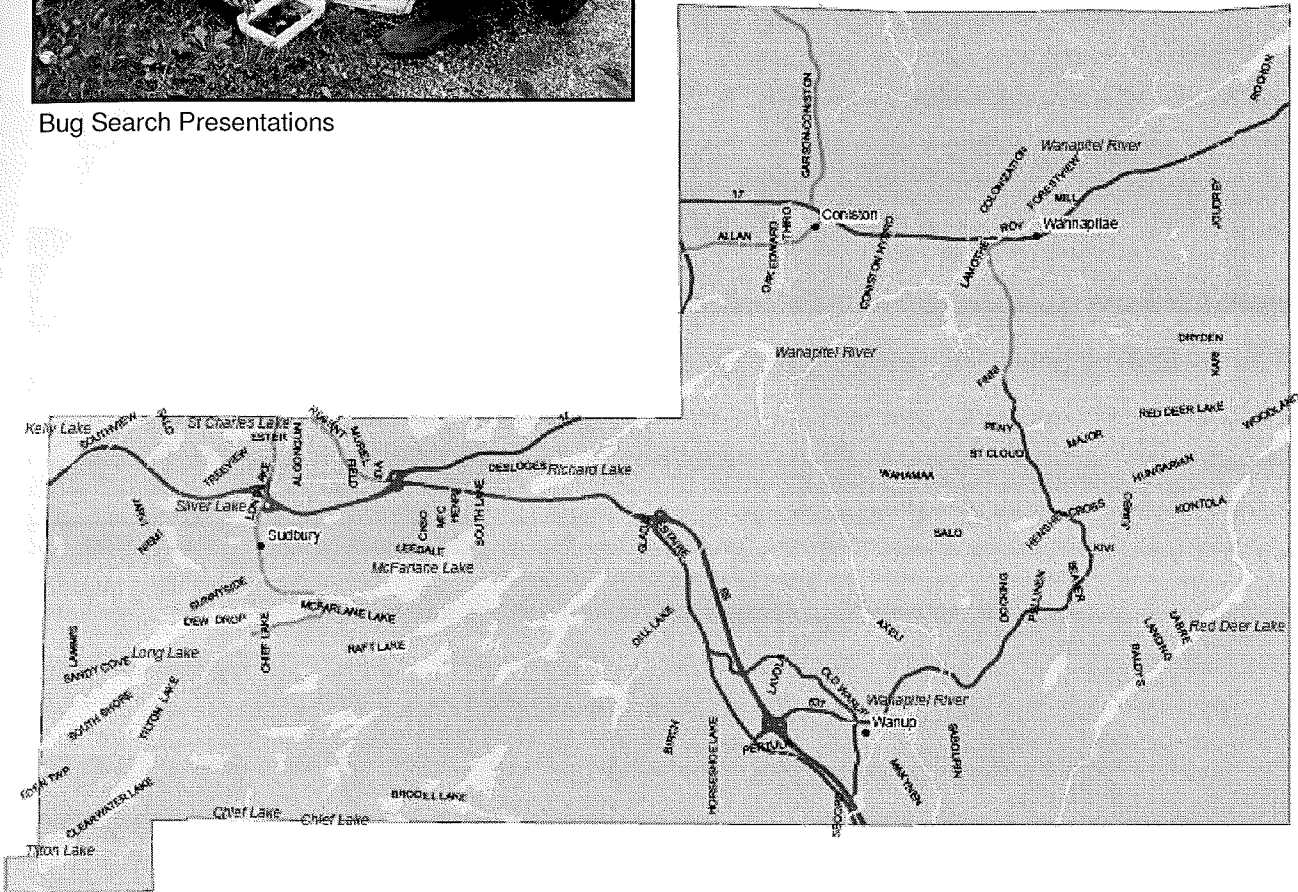
Trout Release at Twin Forks playground

Ward 9

Some highlights from your Ward:



Bug Search Presentations



FrogFind Presentations



Ward 10

Some highlights from your Ward:



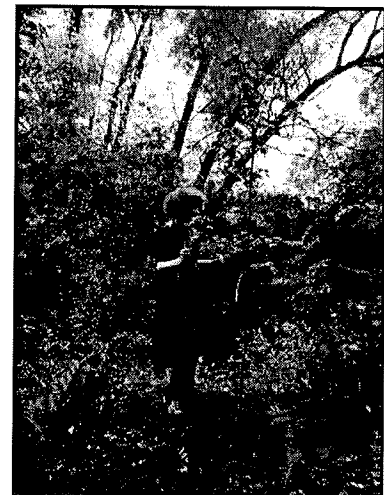
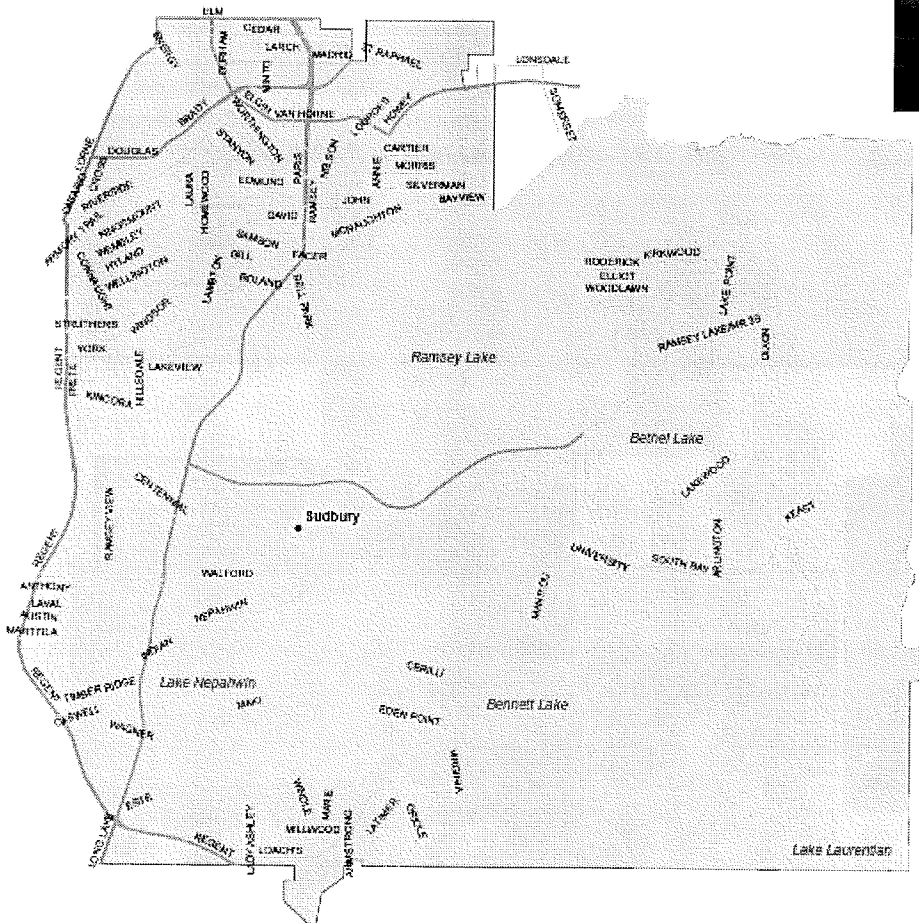
Riverside Community Pocket Park



Cleanups



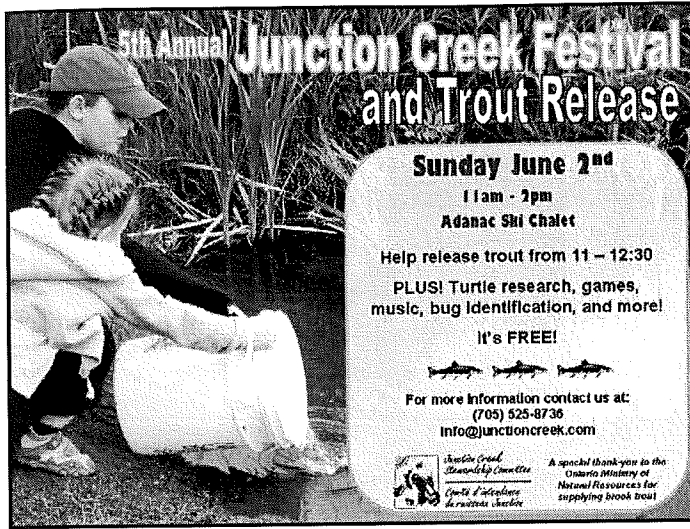
Installing fascines



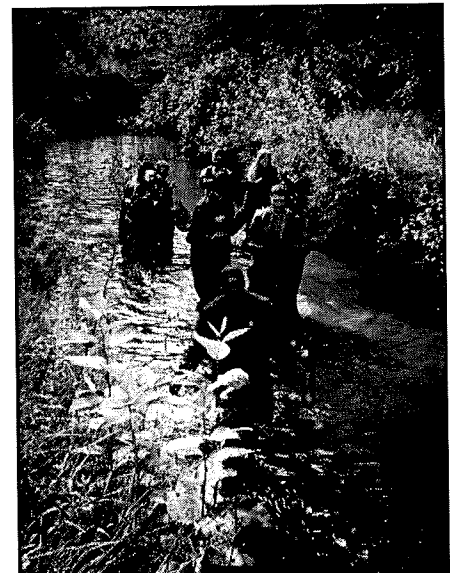
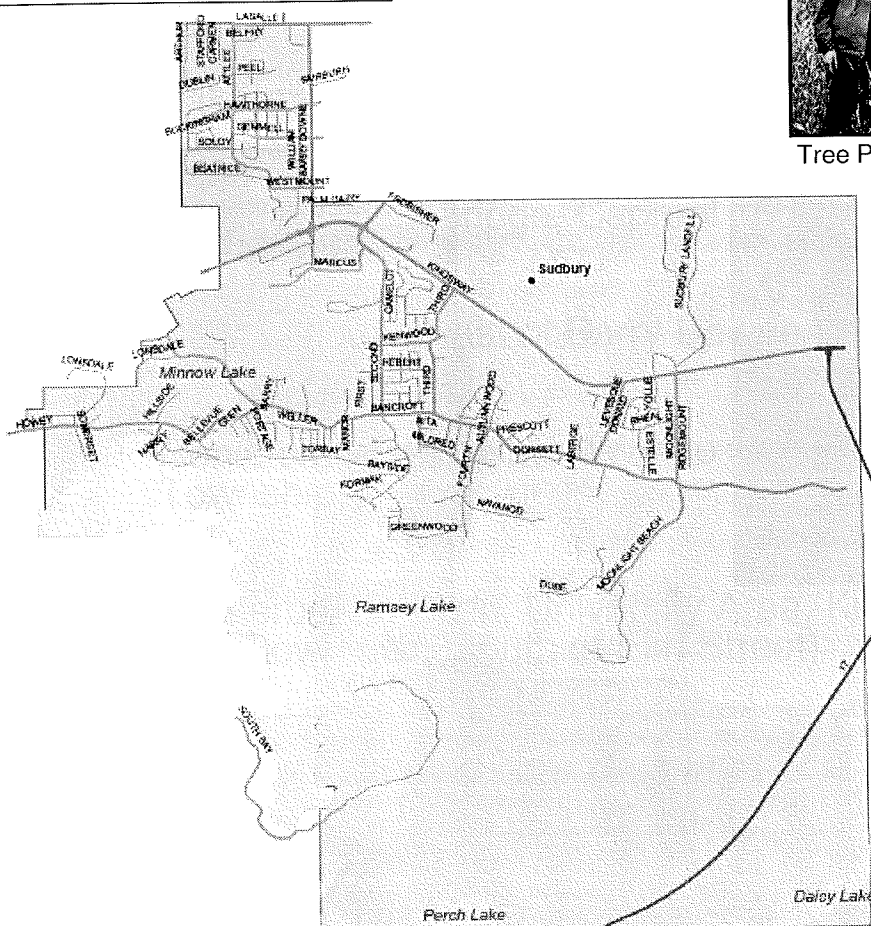
Tree Planting in Greenbelt

Ward 11

Some highlights from your Ward:



Tree Planting Events



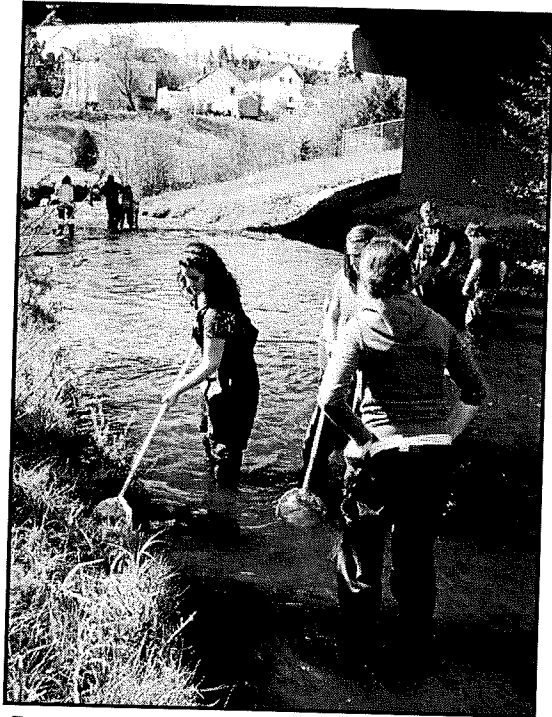
Cleanups

Ward 12

Some highlights from your Ward:



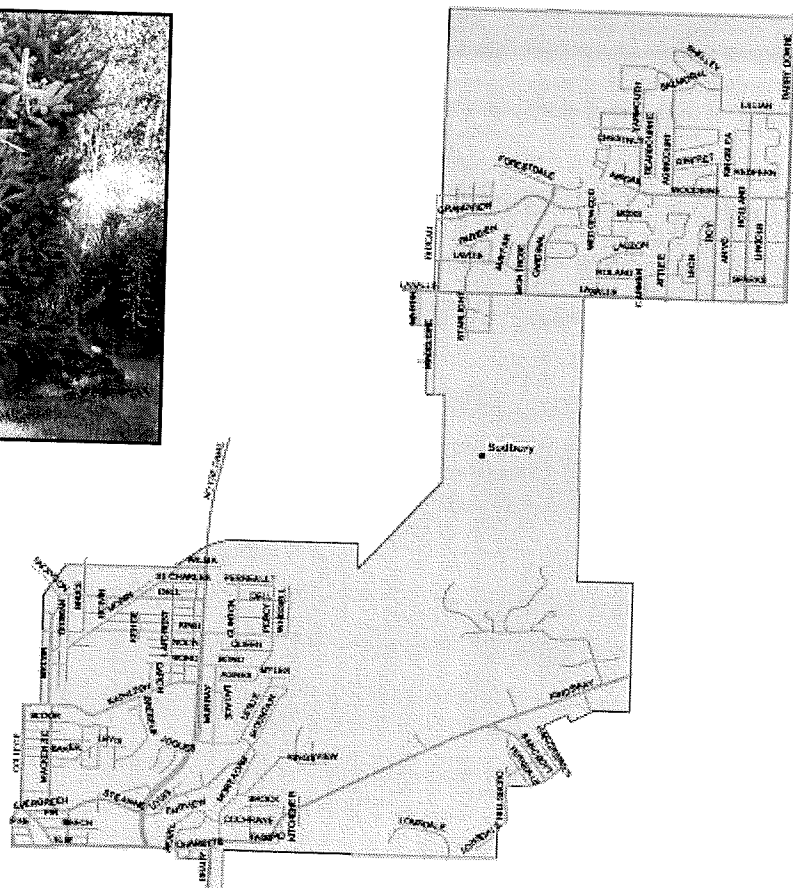
Cleanups



Bug Search at Fielding Street Bridge



Tree Planting behind Burger King



- Ward 1
West End , Gatchell , Copper Park, Robinson, Moonglo, south of Ontario Street and west of Regent Street

Ward 2
Lively, Naughton, Whitefish, Copper Cliff and Worthington

Ward 3
Chelmsford , Onaping, Dowling and Levack

Ward 4
Azilda, Elm West and Donovan

Ward 5
Val Caron, Blezard Valley, Cambrian Heights, McCrea Heights, Guilletville, Notre Dame – Lasalle area west of Rideau Street

Ward 6
Val Therese and Hanmer

Ward 7
Garson, Falconbridge, Capreol and Skead

Ward 8
New Sudbury (east of Barry Downe Road)

Ward 9
Coniston, Wahnapiatae, Wanup and South End (Broder Township)

Ward 10
Lockerby, Lo-Ellen, University Area, Kingsmount, Bell Park and Downtown (south of Elm Street)

Ward 11
Minnow Lake and New Sudbury (west of Barry Downe Road, east of Arthur Street, south of Lasalle Boulevard)

Ward 12
Flour Mill, Downtown (north of Elm Street), New Sudbury (east of Rideau Street, west of Barry Downe Road & north of Lasalle Boulevard), Kingsway-Bancroft area

Junction Creek Stewardship Committee
Comité d'entendances du ruisseau Junction

Mission: To restore all life to the Junction Creek ecosystem, and to improve the quality of life for humans as well.

Core funding
2014-17 (4 years)

| | |
|-------------------|-------------------------|
| Restoration | Education and awareness |
| Public engagement | Research |

Past funding

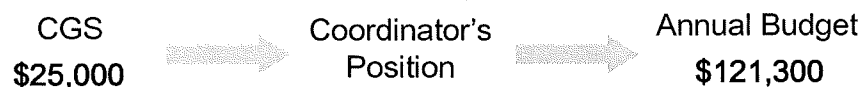
CGS
\$25,000



Coordinator's
Position



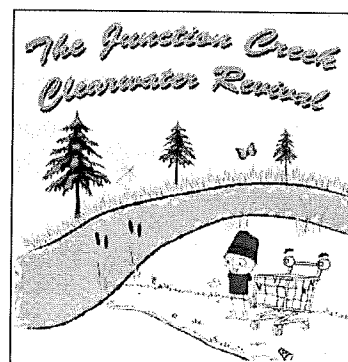
Past funding



Restoration



Education and Awareness



Public Engagement



WANTED

high domed shell
dark shell normally with yellow speckles (but not always)
bright yellow throat
up to 25 cm (10 in) long

your Blanding's turtle sightings

Help the Blanding's turtle population by reporting your sightings of this Threatened species.

If you see a Blanding's turtle contact the Junction Creek Stewardship Committee immediately:
705-525-8736
705-626-2585
705-694-4813

If you do not reach us, please leave a message including:
(1) the time and location of your sighting
(2) the size of the turtle
(3) your contact information

THANK YOU for your support of turtle conservation!

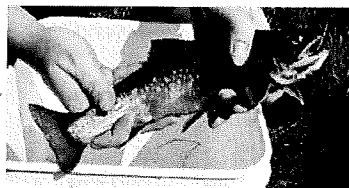
For more information contact sarah@junctioncreek.com

Research



Measures of success – in the past 3 years

2,063 volunteers
 27,500 lbs garbage removed
 10,116 trees and shrubs planted
 3,500 students reached



Future support requested

CGS
 \$30,000



Core funding
 • Coordinator
 • Insurance
 • Rent



Annual Budget
 ?

Future support requested

CGS
\$30,000



Core funding
• Coordinator
• Insurance
• Rent



Annual Budget
?

\$30,000 per year for 4 years = \$120,000



