

By-law 2019-204

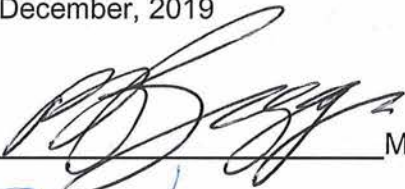
**A By-law of the City of Greater Sudbury to Amend By-Law 2012-145
being a By-law of the City of Greater Sudbury to Establish
and Regulate the Use of Off-Leash Dog Parks**

Whereas Council of the City of Greater Sudbury wishes to further amend By-law 2012-145 being a By-law of the City of Greater Sudbury to Establish and Regulate the Use of Off-Leash Dog Parks;

Now therefore Council of the City of Greater Sudbury hereby enacts as follows:

1. By-law 2012-145 being a By-law of the City of Greater Sudbury to Establish and Regulate the Use of Off-Leash Dog Parks, as amended, is hereby further amended by;
 - (a) repealing Schedule "A" – Designated Dog Park Areas and enacting, in its place and stead, Schedule "A" – Designated Dog Park Areas attached hereto as Schedule "A" and forming a part of this By-law; and
 - (b) adding Map 3 to Schedule "C" – Designated Dog Park Area Maps attached hereto as Schedule "B" and forming a part of this By-law.
2. This By-law shall come into full force and effect upon passage.

Read and Passed in Open Council this 10th day of December, 2019



Mayor



Clerk

Schedule "A"
to By-law 2019-204 of the City of Greater Sudbury

Schedule "A"
By-law 2012-145 of the City of Greater Sudbury

Designated Dog Park Areas

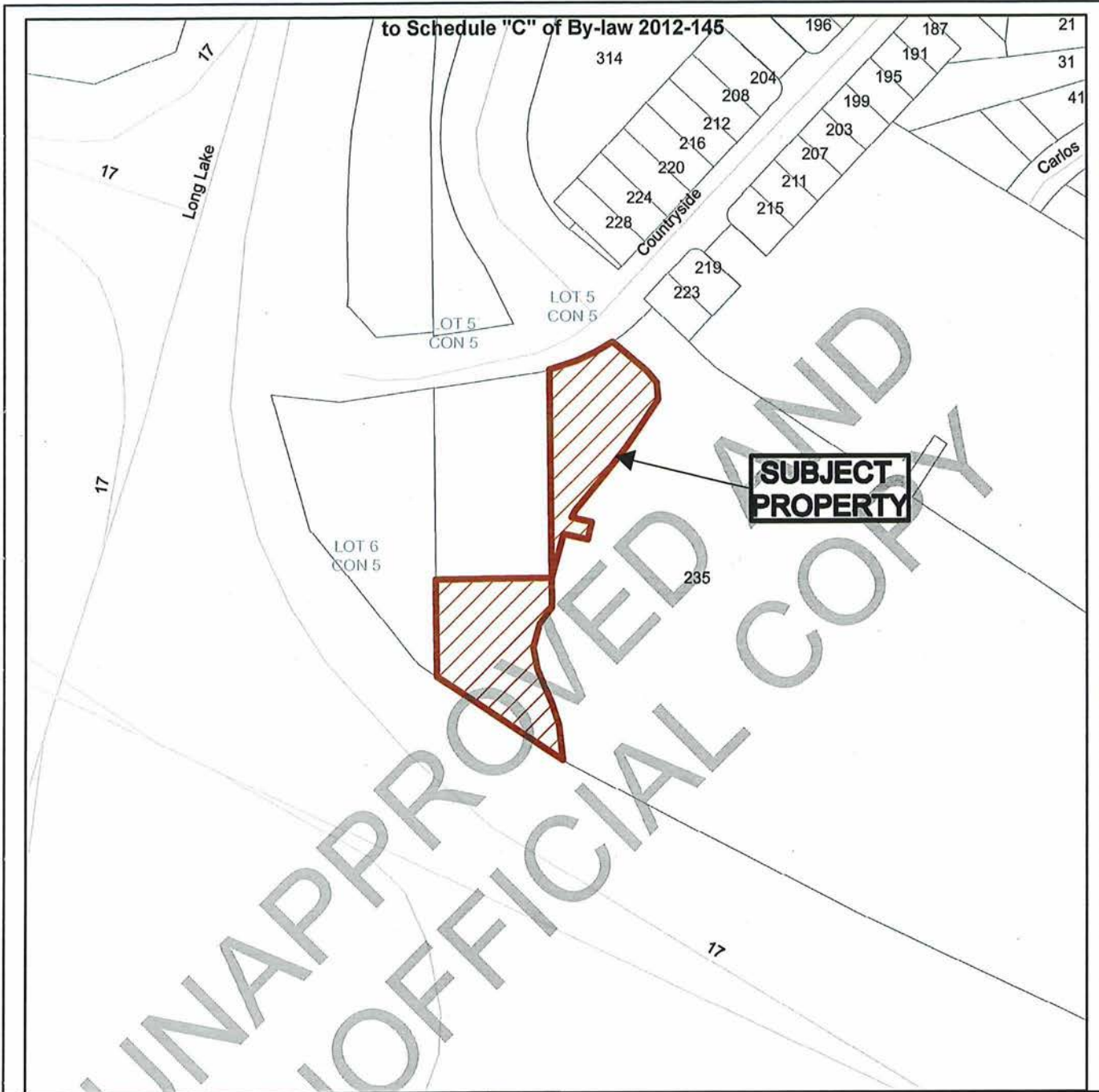
1. The following areas are designated as Designated Dog Park Areas:

	LEGAL DESCRIPTION	MAP
1	Part of PIN 73573-0340(LT) Remainder of Parcel 10180, SES Part of Lot 12, Concession 4 Township of Neelon	See Map 1 in Schedule "C"
2	PIN 73345-0244(LT) Part 1 on Plan 53R-4824 Part Lot 6, Concession 5 Township of Rayside Municipally known as 3878 Municipal Road 15, Azilda	See Map 2 in Schedule "C"
3	Part of PIN 73475-1247 (LT) Part of Part 16 on Plan 53R-13886 Part of Lot 6, Concession 5 Township of Broder Municipally known as the lands lying west of the Gerry McCrory Countryside Sports Complex located at 235 Countryside Drive, Sudbury	See Map 3 in Schedule "C"

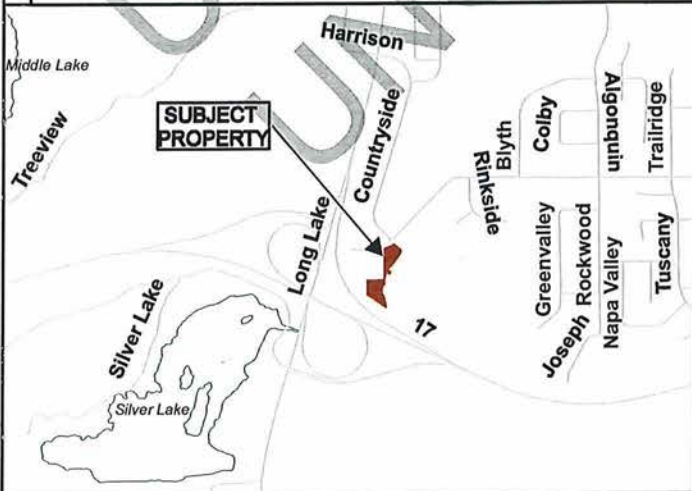
Schedule "B"
to By-law 2019-204 of the City of Greater Sudbury

Map 3
to Schedule "C" of By-law 2012-148

Map 3



UNAPPROVED AND UNOFFICIAL COPY



<p>South End Dog Park</p>	
<p>Subject Property being part of PIN 73475-1247, Part Lot 16, Plan 53R-13886 Lot 6, Concession 5, Township of Broder, Countryside Drive, Sudbury, City of Greater Sudbury</p>	
<p>NTS Sketch 1</p>	<p>Date: 2019 12 02</p>