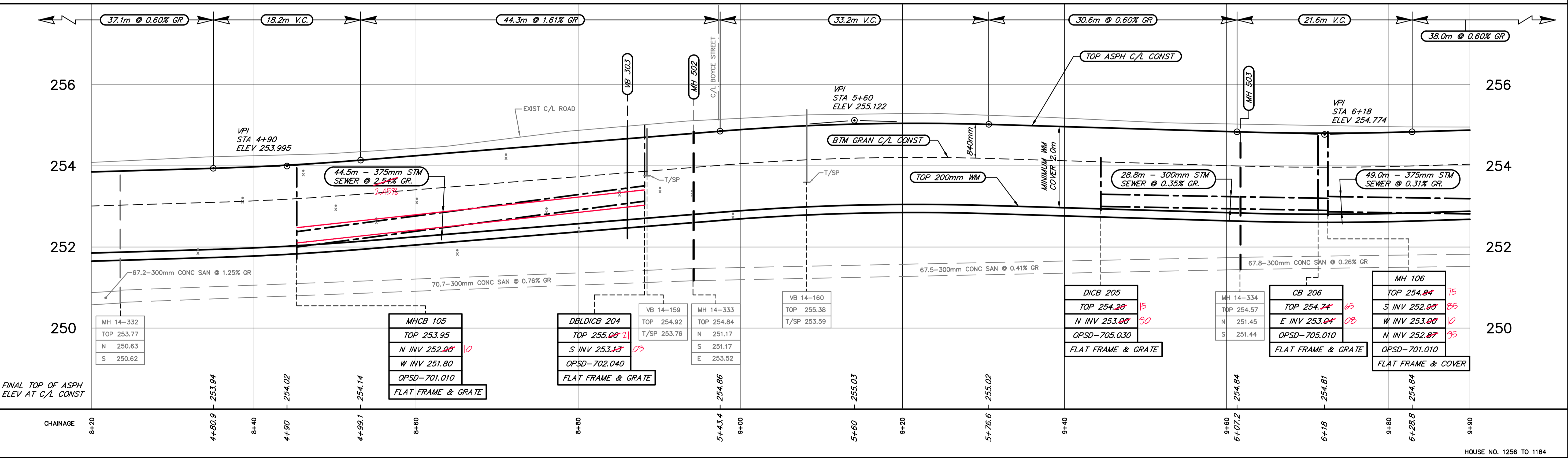


WATERMAIN CONSTRUCTION NOTES:
CROSSINGS - WHEN WATERMAIN GROSSES UNDER A SEWER, A VERTICAL SEPARATION OF 0.5m MINIMUM SHALL BE MAINTAINED BETWEEN THE INVERT OF THE SEWER & THE CROWN OF THE WATERMAIN. ALSO THAT A LENGTH OF WATER PIPE BE CENTERED AT THE POINT OF CROSSING SO THAT THE JOINTS ARE EQUIDISTANT & AS FAR AS POSSIBLE FROM THE SEWER.
 - WATERMAIN MAY BE INSTALLED LOWER TO CLEAR SANITARY SEWER LATERALS
VERTICAL & HORIZONTAL DEFLECTION - FLEXIBILITY SHALL BE LIMITED TO ONE DEGREE (1°) OR 100mm PER EACH 6m PIPE LENGTH

CAUTION:
 ALL UTILITIES ARE NOT NECESSARILY SHOWN. LOCATIONS SHOWN ARE NOT GUARANTEED AND SIZES & LOCATIONS MUST BE VERIFIED IN THE FIELD.

NOTE:
 REFER TO PAGE 10 FOR TYPICAL SECTIONS, NOTES, LEGEND & STRUCTURE SUMMARY CHART.

NOTE:
 ALL CHAINAGES AND OFFSETS FOR PROPOSED CONST ARE TAKEN OFF C/L CONST AND EXISTING DETAIL TAKEN FROM C/L R.O.W. (INDEPENDENT CHAINAGES)



DISCLAIMER OF WARRANTY: The data is provided "as is" without warranty of any kind either expressed or implied. The user assumes all liability for any damage or loss resulting from the use of the data.

NOTES

- ALL DIMENSIONS ARE IN METRES UNLESS OTHERWISE INDICATED.
- * DENOTES BUILDINGS PLOTTED FROM O.L.S. PLAN.
- DENOTES BASEMENT FLOOR ELEVATION, WITH HOUSE NUMBER.
- ALL WATER CONNECTIONS ARE 400mm UNLESS OTHERWISE NOTED.
- ALL SAN. SEWER CONNECTIONS ARE 400mm UNLESS OTHERWISE INDICATED.
- ALL SAN. & STORM SEWER ELEV'S ARE INVERTS UNLESS OTHERWISE NOTED.

REVISIONS

DATE	DETAILS	BY

DATE: 2008-03-27
DRAWN: WEB
DESIGNED:
CHECKED:
ENGINEER:
APPROVED:



PROPOSED RECONSTRUCTION

MARCEL STREET
 STA 4+65 TO STA 6+35
 AT BOYCE ST
 LOCKERBY AREA

HOUSE NO. 1256 TO 1184
 SCALE: 1:250 HOR.
 1:50 VER.
 CONTRACT NO.: ENG08-16
 CAD/FILE NUMBER: C5339-3 (3 OF 4)
 PAGE NO.: 4 OF 10