

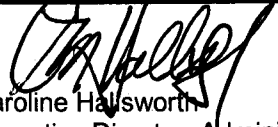

Request for Decision City Council



Type of Decision									
Meeting Date	March 28, 2007				Report Date	March 15, 2007			
Decision Requested	X	Yes		No	Priority	X	High		Low
	Direction Only				Type of Meeting	X	Open		Closed

Report Title
Sudbury 125 th Anniversary Celebrations

Budget Impact / Policy Implication	Recommendation
<div> <div>This report has been reviewed by the Finance</div> <div></div> </div>	<p>THAT the Council of the City of Greater Sudbury celebrate the 125th Anniversary of the founding of the community that is today the City of Greater Sudbury, in 2008; and</p> <p>THAT staff be directed to report to Council by June 2007, with options for anniversary programming and proposals for a community organization to oversee the 2008 festivities.</p>
<div>X</div> <div>Background Attached</div>	<div></div> <div>Recommendation Continued</div>

Recommended by the Department	Recommended by the C.A.O.
 Caroline Hallsworth Executive Director, Administrative Services	 Mark Mieto Chief Administrative Officer

Date: March 15, 2007

Report Prepared By	Division Review
Caroline Hallsworth Executive Director of Administrative Services	

BACKGROUND

There are a variety of dates associated with the founding of the community which has evolved to become the City of Greater Sudbury. The "family tree" for the City of Greater Sudbury, as developed by the City Solicitor, is attached for the information of Council.

Prior to the discovery of ore in 1883, as the Canadian Pacific Railway began work on the railway line through this area, the lumber camp known as Sainte-Anne-des-Pins was located in the region. According to the book "Sudbury: Rail Town to Regional Capital", as the east and west lines of the railway converged in 1883 "Sudbury became a major construction site and company town." Later that same year, the province sent surveyors into the region "to divide the region into townships and impose its authority." Named in honour of the CPR commissioner's wife's hometown in England, Sudbury was referred to informally as the Village of Sudbury which was part of the geographic township of McKim. The CPR station, the jail and the courthouse, all of which are highly symbolic in the evolution from a settlement of homes, to a community, were constructed in 1883.

As the settlement grew and developed it gradually became increasingly formal in structure. Originally local affairs were governed by the CPR under the federal Public Works Act. A few years later, the McKim Municipal Township Council was established and was believed to be in operation by January 1887. The townships of Rayside and Balfour were both formed on January 1, 1890. The Town of Sudbury was incorporated on January 1st, 1893. The United Townships of Drury, Denison and Graham were incorporated on January 1, 1894 followed by the incorporation of the Town of Copper Cliff in 1902, the Township of Waters in 1903, the Township of Hanmer in 1904, the United Townships of Neelon and Garson in 1905 and the Township of Blezard in 1906.

In 1976, the Council of the City of Sudbury passed resolution 76-563 which stated in part that the City promote tourism by planning an annual summer festival,

...with the Grand Founder's Day Festival in 1983 to commemorate the founding of the settlement of Sudbury and a Grand Centennial Festival in 1993 to commemorate the 100th year of the incorporation of Sudbury as a municipality...

Subsequently, in 1979 Council recognized the Sudbury Centennial Foundation as the organizing body for the 1983 Centennial which celebrated the 100th anniversary of the founding of the community of Sudbury. A number of special events were held during 1983 and the Sudbury Centennial Time Capsule 1983-2083 was preserved in the lobby of Tom Davies Square. The anniversary of the incorporation of the City of Sudbury was not formally celebrated in 1993.

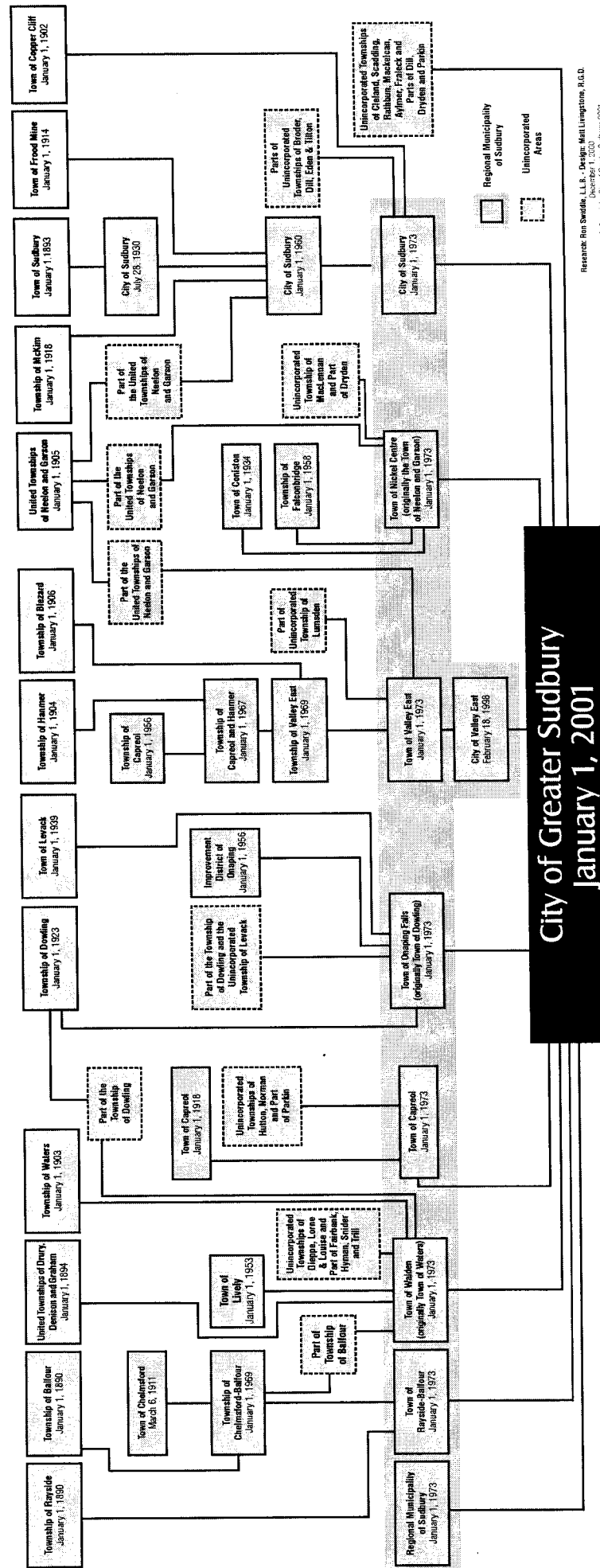
Date: March 15, 2007

Council can determine which anniversary it wishes to mark and celebrate. The first option is to celebrate the 125th anniversary of the 1883 discovery of ore and the naming of Sudbury. The second option, is to celebrate the 125th anniversary of the formation, in 1890, of the first legal entities, the Townships of Rayside and Balfour. A third option would be to pick one of the other municipally significant dates, such as the establishment of the first Township Council (McKim Municipal Township Council 1887), incorporation of the first town (Sudbury in 1893), formation of the Regional Municipality (1973) or creation of the new City of Greater Sudbury (2001) as the anniversary date.

As Greater Sudbury is a community of communities and as each of the predecessor municipalities have different anniversary dates relating to their establishment as legal entities, and as the community celebrated its 100th anniversary in 1983, it is recommended that the first option, of celebrating the 125th anniversary of the 1883 discovery of ore and the naming of Sudbury, be selected by Council.

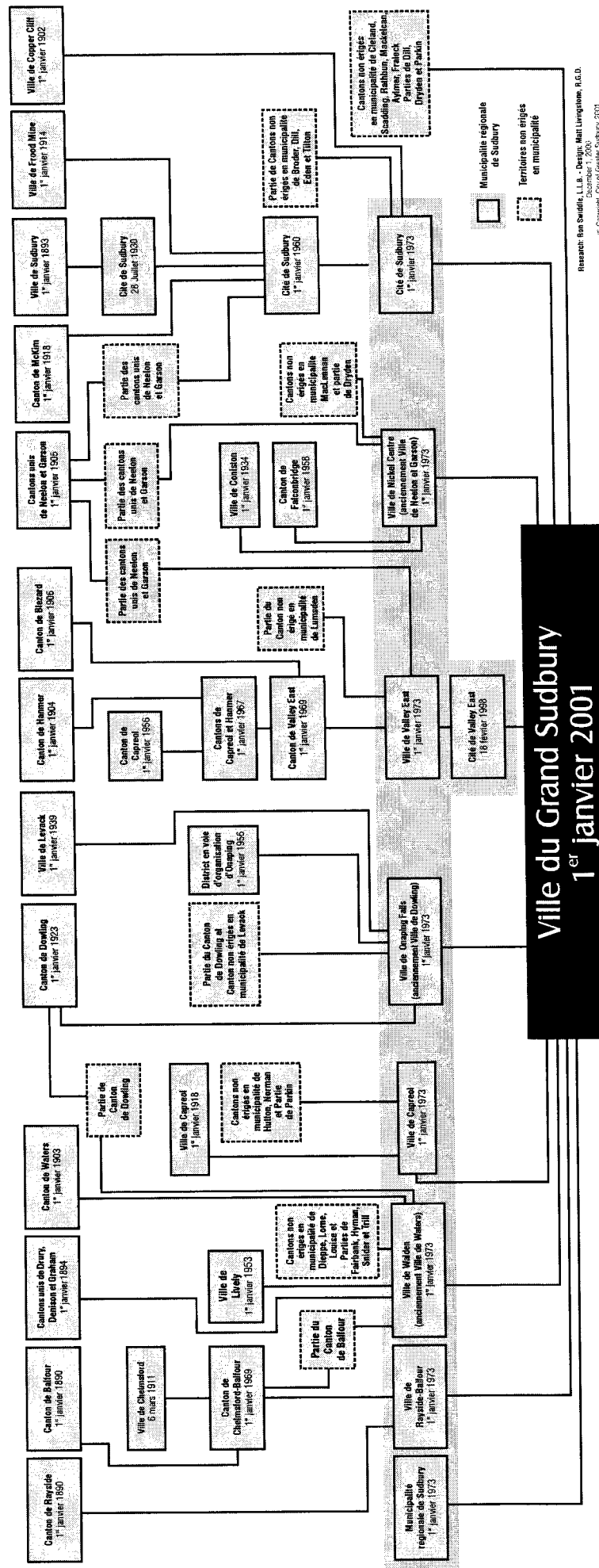
An interdepartmental staff work group, which will include representatives from Community Development and Growth and Development will be established to develop a report, to be presented to Council in June 2007, with options for anniversary programming and proposals for a community organization to oversee the 2008 festivities.

City of Greater Sudbury Municipal Family Tree



Researched: Ron Swindle, L.L.B., Design: Matt Livingstone, R.C.D.
© Copyright: City of Greater Sudbury, 2001

Ville du Grand Sudbury Arbre généalogique municipal




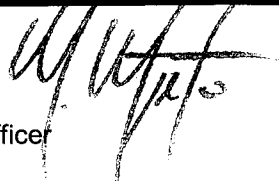
Request for Decision City Council




Type of Decision											
Meeting Date		March 28, 2007				Report Date		March 14, 2007			
Decision Requested		X	Yes		No	Priority		X	High		Low
		Direction Only				Type of Meeting		X	Open		Closed

Report Title
Greater Sudbury Housing Corporation Reserves

Budget Impact & Policy Implication		Recommendation	
X	This report has been reviewed by the Finance Division and the funding source has been identified.		
<p>Due to unusual circumstances in 2006, the GSHC was unable to complete its capital program. This resulted in unspent funding of \$155,000. In addition, the extremely low vacancy rate meant that the GSHC could not acquire sufficient units from the private rental market to meet its Rent Supplement Program unit target allocation. This resulted in underspending of \$105,000.</p> <p>The projected City surplus will not be impacted by this allocation of funds to the GSHC as the underspending was unanticipated. However, it will result in a decreased actual surplus.</p>		<p>It is recommended that Council permit the Greater Sudbury Housing Corporation (GSHC) to seed the program reserve accounts from GSHC 2006 underspending as outlined in the attached report.</p>	
X	Background Attached		Recommendation Continued

Recommended by the Department	Recommended by the C.A.O.
 Catherine Matheson General Manager, Community Development	 Mark Mieto Chief Administrative Officer

Date: March 14, 2007

Report Prepared By
 Denis Desmeules Manager, Housing Services

Division Review
Name Title

Background

Last December, Council approved the establishment of reserve accounts by the Greater Sudbury Housing Corporation (GSHC) beginning in 2007. The reserve accounts were to be established in designated program areas to help offset future cost pressures. The reserves were to be funded through potential annual underspending.

Prior to Council's approval of reserves, any GSHC underspending was returned to the CGS.

The GSHC is requesting that it be allowed to begin populating its reserves beginning with the unanticipated 2006 underspending.

Details

In 2006, the GSHC underspent in its Capital account and the Rent Supplement Program account. The underspending in the Capital account was due in particular to a tender which could not be awarded due to the lack of bidders. The tender was for an emergency generator at the high rise project located at 1920 Paris. Indications are that early issuance of the tender in 2007 will result in more competitive bids being received. The requested amount to be brought forward is \$155,000. Should the request not be granted, the GSHC will be required to fund the generator from this year's capital allocation. This will be accomplished by cancelling and/or postponing other needed capital repairs.

The underspending in the Rent Supplement Program is due in part to the city's very low vacancy rate. The tight market conditions made it difficult for the GSHC to acquire new units or replace units which are being cancelled. The CGS relies on rent supplement units to help achieve its legislated service level targets. The GSHC also reports that the cost of new units is higher than that of existing units due to the higher rents being commanded in the market. This, combined with the rising cost of existing units, is expected to create future rent supplement program expenditures pressures. The 2006 program underspending was \$105,000. Should the request not be granted, the GSHC will have difficulty replacing cancelled units and may not be able to acquire new units. The CGS may not achieve its legislated service level targets.

Recommendation

It is recommended that the GSHC be permitted to seed the reserves for each of the program areas as detailed above (total amount \$260,000).


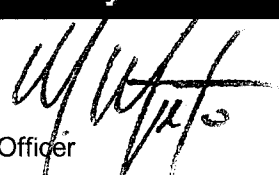
Request for Decision City Council



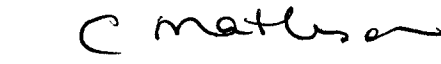
Type of Decision									
Meeting Date	March 28, 2007				Report Date	March 16, 2007			
Decision Requested	X	Yes		No	Priority	X	High		Low
	Direction Only				Type of Meeting	X	Open		Closed

Report Title
Decision on the City of Greater Sudbury's Application for 96 New Long-Term Care Beds to the Ministry of Health and Long Term care

Budget Impact & Policy Implication	Recommendation
<p>This report has been reviewed by the Finance Division and the funding source has been identified.</p> <p>NOT APPLICABLE</p>	<p>WHEREAS there is an urgent need for the development of long-term care beds within the City of Greater Sudbury, and</p> <p>WHEREAS increasing health care demands due to the aging population have contributed to the current wait list of 477 clients waiting for admission to long term care homes; and</p> <p>WHEREAS the City of Greater Sudbury and the Province have invested \$22.0 million into the creation of the seniors campus at Pioneer Manor which has significantly enhanced 220 of the 342 resident rooms to the highest physical standard of accommodation within the long term care industry;</p> <p>THEREFORE BE IT RESOLVED THAT the City actively support and encourage other long -term care providers in their application and development of the newly announced 96 additional beds for the City of Greater Sudbury, and;</p>
Background Attached	Recommendation Continued

Recommended by the Department	Recommended by the C.A.O.
 Catherine Matheson General Manager, Community Development	 Mark Mieto Chief Administrative Officer

Date: March 28, 2007

Report Prepared By
 Randy Hotta Director of Long Term Care and Senior Services

Division Review
Name Title

RECOMMENDATION CONTINUED:

THAT the Minister of Health and Long Term Care be lobbied by City Council to maintain the operation of the 70 interim beds at Pioneer Manor as opposed to the removal of the 72 interim beds once the new 96 beds are opened; and

THAT the City of Greater Sudbury continue to progressively lead and support geriatric services within our community through the completion of the Seniors Campus at Pioneer Manor and its components which are the Regional Geriatric Program, Northeastern Ontario Dementia Assessment and Consultation Services (NODAC), supportive housing and the City of Lakes Family Health Team.

BACKGROUND:

The Ministry of Health and Long Term Care (MOHLTC) has issued a call for Applications for Long-Term Care beds in the City of Greater Sudbury. This current call for applications for Sudbury is open to any party that may be interested in developing new long-term care beds within the City of Greater Sudbury. Applications to the Ministry are due on April 13, 2007.

LONG-TERM CARE OVERVIEW:

Permanent Beds	# of Beds
Finlandia	110
Elizabeth Centre	128
St. Joseph's Villa	128
Extendicare - Falconbridge	234
Extendicare - York	288
Pioneer Manor	<u>342</u>
Total Permanent LTC Beds in the CGS	1,230
Interim Beds	
Finlandia	2
Pioneer Manor	<u>70</u>
Total Interim LTC Beds in CGS	72

Date: March 28, 2007

ALLOCATION OF ADDITIONAL BEDS:

- 96 Permanent Beds allocated to the City of Greater Sudbury
- In addition to operating funds, the MOHLTC will provide \$75,000 per bed towards construction costs, payable over a period of 20 years.
- The 96 permanent beds will replace the current 72 interim long-term care beds when completed.

OPTIONS:

Three options have been prepared and considered:

1. No application
2. Application for the construction of beds at Pioneer Manor
3. Application for the construction of beds at a yet to be identified new location.

Recommendations from Pioneer Manor's Committee of Management are brought forward to Council in the presented resolution.

Components of the Seniors Campus

Regional Geriatric Program (RGP)

There are currently five Regional Geriatric Programs in the province of Ontario that have been established at academic health sciences centre in Ottawa, London, Toronto, Kingston and Hamilton. Regional Geriatric Programs provide a comprehensive network of specialized geriatric services which assess and treat functional, medical, and psychological aspects of illness and disability in older adults who have multiple and complex needs. Greater Sudbury has for many years been trying to recruit a geriatrician and the establishment of a Regional Geriatric Program will not only facilitate our recruitment efforts but it will also bring a much needed resource to our medical community.

Northeastern Ontario Dementia Assessment and Consultation Service (NODAC)

The Northeastern Ontario Dementia Assessment and Consultation Service provides access to a specialized Geriatrician services through the use of videoconferencing technology. Since it's inception in 2003 there have been over 100 referrals made to the service. The service saves the client the time and expense of travelling to see a specialist. The videoconferencing "studio" has seen over 1100 patients who access the site to be assessed by other specialists.

Date: March 28, 2007

City of Lakes Family Health Team

The City of Greater Sudbury, the Northern Ontario School of Medicine as well as the Sudbury Regional Hospital submitted a proposal to the Ministry of Health and Long Term Care to establish one of the 150 Family Health Teams announced by the Ministry of Health and Long Term Care. In 2005 the Ministry of Health and Long Term Care announced the approval of the City of Lakes Family Health Team. The City of Greater Sudbury's contribution to the project was the provision of infrastructure. There are four sites that have been proposed that include the Seniors Campus, Valley East, Walden and Rayside-Balfour. Construction of the Seniors Campus site is expected to begin mid summer (2007).

Summary

It is expected that other Long Term Care providers will be bidding on the new 96 LTC beds for this community. Given that the City and the Province has shared the total capital cost and invested \$22 million into the redevelopment of Pioneer Manor which includes the completion of the Seniors Campus. It is recommended that the City focus on the completion of the Campus; the regional geriatric program, Northeastern Ontario Dementia Assessment and consultation services, supportive housing and Family Health Team as these components are critical to the recruitment of a geriatrician to this community and to the enhancement of seniors services.

Request for Decision City Council




Type of Decision									
Meeting Date	March 28, 2007				Report Date	March 22, 2007			
Decision Requested	X	Yes		No	Priority	X	High		Low
	Direction Only				Type of Meeting	X	Open		Closed

Report Title
North Bay petition to Province regarding Ontario Municipal Partnership Fund (OMPF)

Budget Impact / Policy Implication		Recommendation
X	This report has been reviewed by the Finance Division and the funding source has been identified.	<p>WHEREAS municipalities in the North and particularly the City of Greater Sudbury rely heavily on the Ontario Municipal Partnership Fund grant (OMPF); and</p> <p>WHEREAS a Provincial-Municipal Fiscal and Service Delivery review is scheduled to be complete in 2008; and</p> <p>WHEREAS North Bay has petitioned the Province of Ontario to guarantee an increase in OMPF for 2007; and</p> <p>NOW THEREFORE BE IT RESOLVED THAT the City of Greater Sudbury support the North Bay position regarding the OMPF, by petitioning the Province to provide an indexed stable funding guarantee to the OMPF grant; and</p> <p>FURTHER THAT the Province continue to reconcile the OMPF grant based on actual social program expenditures, including the frozen programs, thus ensuring no additional burden be placed on the taxpayer.</p>
X	Background Attached	Recommendation Continued

Recommended by the Department	Recommended by the C.A.O.
 Lorella Hayes Chief Financial Officer / Treasurer	 Mark Mieto Chief Administrative Officer

Date: March 22, 2007

Report Prepared By	Division Review
 Cheryl Mahaffy Deputy Treasurer	

BACKGROUND:

The City of North Bay has asked the City of Greater Sudbury to support its request to the Province to provide a minimum funding level based on the Community Reinvestment Fund Grant for 2004 plus inflation. The illustrations used in the North Bay report indicate that our City could benefit from this change.

The City of Greater Sudbury is the largest recipient of OMPF funding, at a budgeted \$59.4 million for 2007. The details involved in calculating the grant were provided to Council in the 2007 budget binder, and are attached to this report.

A portion of the OMPF grant is based on expenditures for social programs. Some of the social program components are 'frozen' in that regardless of expenditure increases, there will be no grant increases. However, a number of programs do generate increased OMPF fund (Ontario Works, Ontario Disability, Child Care, for examples). When the Province announced the city's 2007 OMPF grant, it based the grant on provincial estimates of the City's anticipated social program expenditures for 2007. The estimates the Province used were based on our 2006 expenditures to September, annualized. However, our 2007 budget projects increases in a number of the social programs, and our budget reflects not only these increases, but any related increased OMPF funding. While the Province announced our 2007 OMPF funding to be \$58.7 million (which is the minimum level of funding for CGS), our budget for this funding is \$59.4 million. North Bay's formula would result in an increase to the minimum stable funding guarantee to \$58.96 million for CGS.

CONCLUSION:

We would recommend support for this petition, with the caveat that all social program expenditures be reconciled by the Province to ensure no further burden be added to taxpayers.

Three areas of the social programs reconciled by the Province are 'frozen' in that the Province has put a ceiling on expenditures it recognizes for grant purposes: administration expenses for both Ontario Works and Child Care programs, plus all of Social Housing. The recommendation in this report asks the Province to reconcile all social programs, based on actual expenditures.

**Estimation of Greater Sudbury OMPF
Social Programs Grants - 2007**

		2007 Budget	2006 Actual
Step 1:	Actual Costs of Program Delivery		
	Social Program Costs		
	ODSP Support	11,255,707	11,011,520
	ODB	3,362,343	3,029,246
	ODSP Admin	1,992,938	1,905,792
	OW Support	6,391,335	5,797,935
	OW Admin	"frozen" 2,658,823	2,653,842
	Child Care Support	2,000,502	1,977,069
	Child Care Admin	"frozen" 355,388	355,388
	Social Housing	"frozen" 15,846,834	15,846,834
	National Child Benefit	800,000	846,197
	Total Social Program Costs	<u>44,663,870</u>	<u>43,423,823</u>
Step 2:	Social Program Grant Calculation		
	Total Social Programs Costs	44,663,870	43,423,823
	0.178% Tax Rate based on \$10.4B assessment	<u>(18,594,222)</u>	<u>(18,361,094)</u>
	Social Program Grant	26,069,648	25,062,729
Step 3:	Northern and Rural Social Program Grant Calculation		
	Social Program Costs net of Grant	18,594,222	18,361,094
	Calculation of Tax Threshold	<u>(19,301,012)</u>	<u>(19,358,393)</u>
	based on 13% of 2005 Tax Revenue		
	Social Program Costs above Threshold (if negative, enter "0")		
	Northern and Rural Social Program Grant	0	0
	OMPF Social Program Grant	<u>26,069,648</u>	<u>25,062,729</u>

- Step 1 Is gathering the budgeted costs for the Social Programs delivered by the City. It should be noted that the Province recognizes the costs of administering the OW and Childrens' Services only up to a certain level, after which the City funds at 100%. In addition, the costs of the entire Social Housing delivery has been frozen at the 2002 amount recognized by the Province at the time the program 'devolved' to the City. A portion of Social Housing is also funded 100% by the City.
- Step 2 Is the calculation of the Social Program Grant, as follows: the cost of program delivery calculated in Step 1, less an amount the Province calculates can be borne by the municipality on the levy. For 2007, this amount is 1.78% of the total total assessment base of \$10.4 billion or \$18.6 million. In 2006, the calculation was 1.8% of \$10.2 billion assessment. For 2007, the result is a \$26 million grant.
- Step 3 Calculation of the Northern and Rural Social Program Grant is geared toward smaller municipalities. The formula provides a grant to if the cost of program delivery borne by the municipality (the \$18.6 million from Step 2) is greater than 13% of municipal tax revenue as calculated by the Province, based on the latest Financial Information Returns (FIR) filed by the municipality. The calculation includes actual tax revenue received by the municipality, and grossed up Payments in Lieu of taxes from the senior levels of government for 2005 (as 2006 returns are not yet filed). The City of Greater Sudbury does not qualify for this funding.

**Estimation of Greater Sudbury OMPF
General Municipal Portion - 2007**

		2007 Budget	2006 Actual
Step 1: Equalization Grant			
	Assessment Equalization Component	16,639,030	17,496,464
	Farmland and Managed Forest Component	0	0
Step 2: Northern and Rural Communities Grant			
	Rural Communities Component	0	0
	Northern Communities Component	16,732,705	16,307,230
	Northern and Rural Social Programs Component	0	0
	Stabilization Component	0	0
Step 3: Police Services Grant		0	0
Step 4: Phase-In Adjustment		<u>0</u>	<u>0</u>
	OMPF Municipal Grant	<u>33,371,735</u>	<u>33,803,694</u>

Data Provided by Province

Number of Households	71,203	70,901
Assessment per Household	\$ 146,710	\$ 143,871
Average Ontario Assessment	\$ 187,000	\$ 185,000
Policing Costs per Household	\$ 498	\$ 470
Rural and Small Community Measure	13.5%	11.3%
Northern Grant Per Household	\$ 235	\$ 230

- Step 1** **Assessment Equalization Component** calculation is as follows:
Difference between Average and CGS Assessment per Household times number of Households divided by 10,000 times \$58 (187,000 - 146,710 = 40,290 x 71,203 / 10,000 x 58 = 16,639,030
For 2006 the calculation was based on \$60, as follows
(185,000 - 143,871 = 41,129 x 70,901 / 10,000 x 60 = 17,496,464
Farmland and Managed Forest Component does not apply to CGS as these classes make up a very tiny portion of the total assessment.
- Step 2** **Rural Communities Component** - applies only to municipalities with a measure greater than 25%.
CGS measure is 13.5% (11.3% in 2006).
Northern Communities Component - a grant of \$235 per household is 16,732,705
part of the OMPF calculation (2006 was \$230). 16,307,230
Northern and Rural Social Programs Component - applies only to municipalities where the Social Programs exceed the threshold calculated in Step 3 of the OMPF Social calculation.
Stabilization Component - given only to municipalities where the OMPF grant decreases by more than \$150 per household.
- Step 3** **Police Services Grant** - given only to communities with a rural/small community measure of 75% or more.
- Step 4** **Phase In Adjustment** - the City of Greater Sudbury is fully phased-in (no major changes in CRF / OMPF funding).