



Nickel District Conservation Authority

CAPITAL FUNDING PLAN

August 8, 2007

BACKGROUND



- N.D.C.A. first approached City in 2001 for Capital Funding.
- Province eliminated capital funding to all Authorities in 1996, and has never restored this funding.
- Watershed problems such as flooding and erosion did not disappear.
- Climate change will likely lead to more severe storm events and impacts on people, municipal infrastructure, etc.
- Must be proactive and not reactive, as much as possible.

CITY SUPPORT



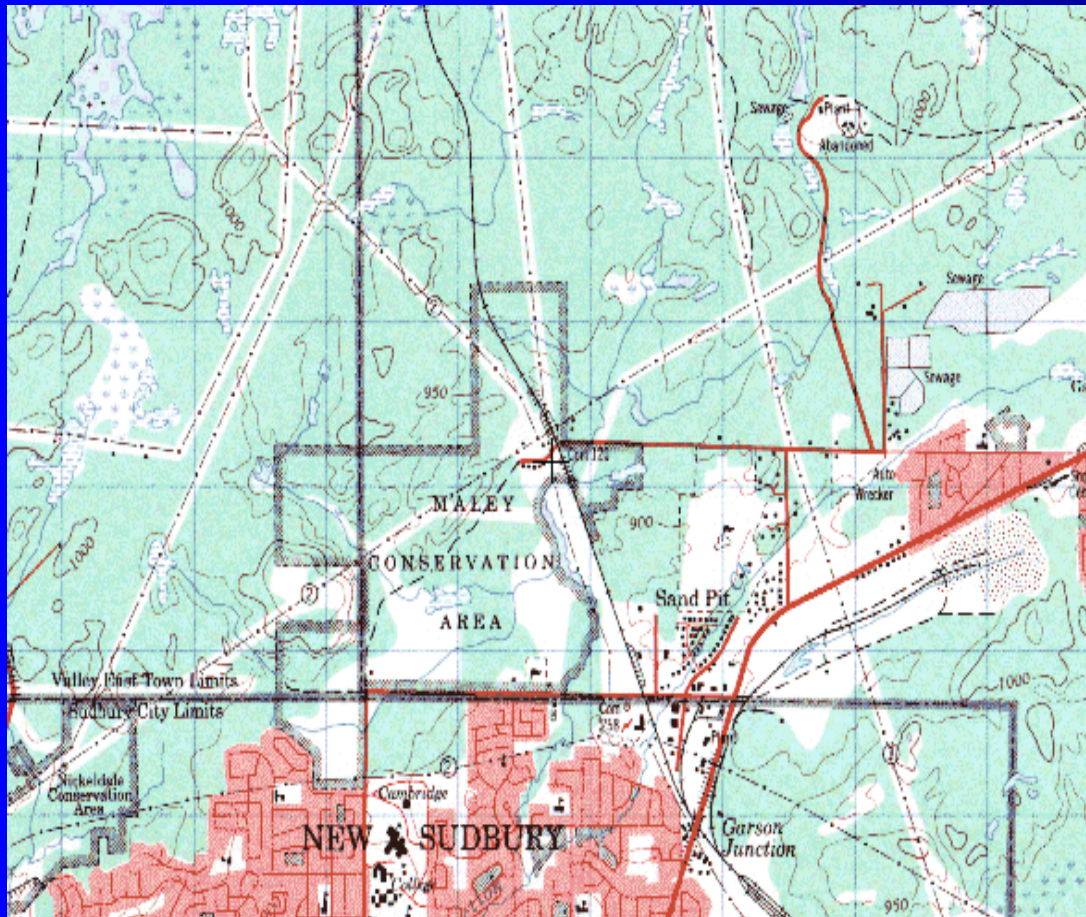
- Since 2002, the City has approved special Capital Funding for the N.D.C.A.
- The amounts approved each year, have ranged from \$125,000 to \$250,000.
- City funding has come from designated reserves OR as in 2007, from the General Levy after being ranked.
- This funding is in addition to the operating funds approved for the N.D.C.A. each year.
- N.D.C.A. always grateful for support from City.

PROJECT ACTIVITIES



- Capital works in the Maley Dam Reservoir to improve flood protection.
- Romford Flood Control Berm (2006/2007 project with City.)
- Major maintenance and inspections at Maley, Nickeldale & Lake Laurentian Dams.
- Major maintenance and inspections of Junction/Nolin Creeks box culverts (**1,755 metres in total**).

MALEY DAM



- Opened in June, 1971.
- Dam is 260 m long, and 10.5 m high.
- Drainage area covers 30 sq. kms.
- Reservoir area is 440 hectares in size.
- Located on east branch of Junction Creek, north of Maley Drive.
- Provides flood protection for hundreds of residences and businesses.
- Timberwolf Golf Course.

MALEY DAM REPAIRS



NICKELDALE DAM



- Opened in May, 1980.
- Dam is 422 m long, and 9.6 m high.
- Drainage area covers 10.5 sq. kms.
- Reservoir area is 160 hectares in size.
- Located on west branch of Junction Creek, north of Lasalle Blvd.
- Provides flood protection for many residences and businesses.



NICKELDALE DAM REPAIRS



BOX CULVERT INSPECTIONS & REPAIRS



LAKE LAURENTIAN DAM



Lake Laurentian is man-made.

Backwater dam is 2.4 m high and 10.5 m long, and was built in 1965.

Lake perimeter is 14 hectares.

Backwater dam is approximately 22 m above the outlet into Lake Ramsey.



LAKE LAURENTIAN DAM REPAIRS





ISSUES & PRIORITIES



- Continue to improve flood protection.
- Major maintenance on two flood control dams.
- Annual Dam Safety Inspections; Dam decommissioning
- 1,755 metres of box culvert under downtown streets.
- Flood forecasting network replacements and upgrades.
- Erosion Control technical assistance to private landowners.
- 950 hectare Lake Laurentian Conservation Area maintenance and upgrades.

CAPITAL FUNDING REQUEST



- \$125,000 was approved for the N.D.C.A. in 2007 as one-time funding.
- N.D.C.A. is requesting the \$125,000 now be considered permanent funding.
- Further requesting \$125,000 as permanent funding, for a total of \$250,000, from 2008 onward.
- City could allocate funds from Community Projects Support Envelope.
- N.D.C.A. will report to City each year on how funds used to deal with issues/priorities over 5 to 10 years.

QUESTIONS AND COMMENTS



Thank You