

GeoSmart Project Update



Council Presentation - March 9th, 2005

What is GeoSmart?

- **Technology that allows users to analyze geographic information from a database in a spatial context (i.e. a map).**
- **Benefits:**
 - **Ability to reduce operational costs**
 - **Improve service levels**
 - **Improve the accessibility of information**
 - **Provides assistance in decision making**
- **Province of Ontario established GeoSmart**
- **led by the Ministry of Natural Resources**
- **GeoSmart has been directed to facilitate the implementation and enhancement of GIS in Ontario communities**



Project Deliverables

- 1) Create an implementation plan and a strategic plan
- 2) Core Infrastructure (Hardware/Software)
- 3) Data Warehouse
- 4) Training
- 5) Partnerships



Project Deliverables

6) Data Enhancement/Collection

a) Property Fabric (2002)



Project Deliverables

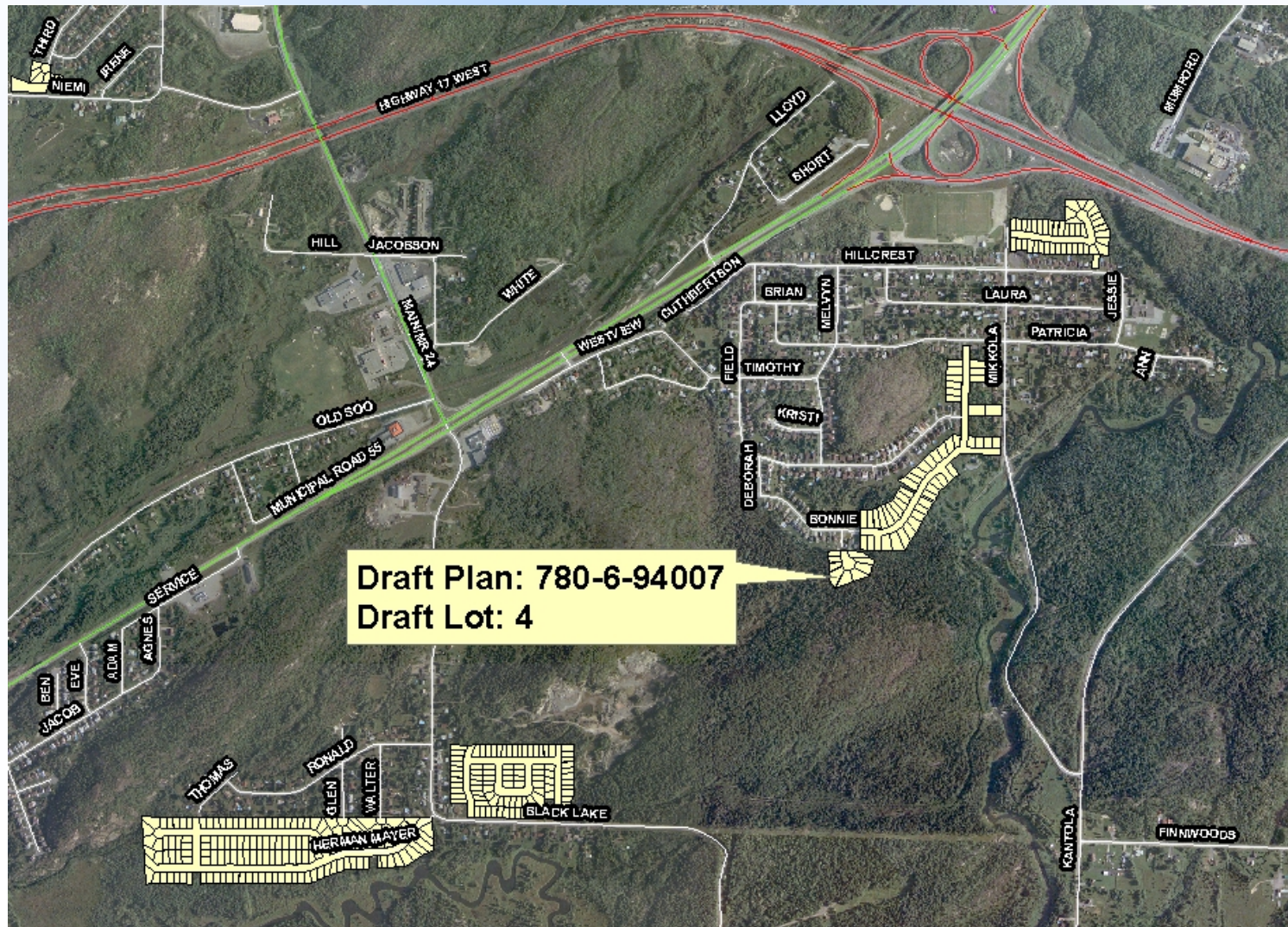
6) Data Enhancement/Collection

b) Address Points



Project Deliverables

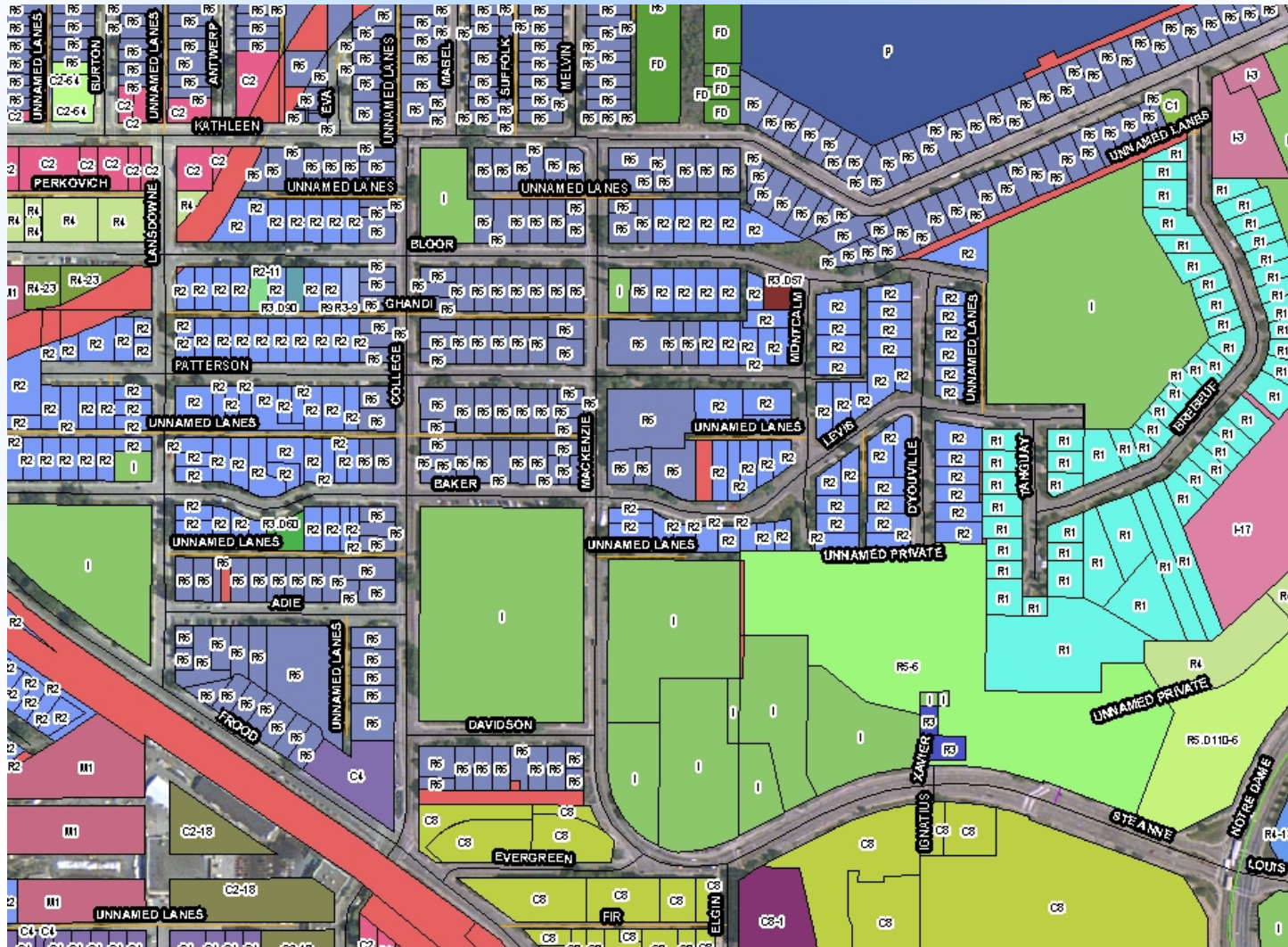
- 6) Data Enhancement/Collection
- c) Development Activity



Project Deliverables

6) Data Enhancement/Collection

d) Zoning



Project Deliverables

7) Web Applications

Greater | Grand Sudbury

Explore	Explore the City of Greater Sudbury.	
Tourism	Tourism Related Information Including Attractions, Recreation and Hospitality locations.	
Services	Community Based services available within the City of Greater Sudbury.	
Invest	Promoting the City of Greater Sudbury as a prosperous place to conduct business.	
Growth	Current and Future land development projects within the City of Greater Sudbury.	

Greater | Grand Sudbury

English | Français

Copyright© 2004 City of Greater Sudbury

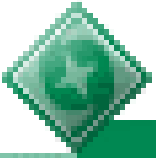


Explore

Explore Sudbury

Explore Sudbury is an external Web View designed with residents and visitors to Sudbury in mind. Any member of the general public, including local businesses and organizations may also find this Web View useful.

This view is used to provide general public access to a selection of the City's base geographic data. It can be used to view ortho photography, find a specific road or address, view property boundaries, or locate points of interest.

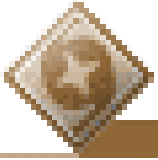


Tourism

Tourism Sudbury

Tourism Sudbury is another Web View available to the public. This view has been designed to provide residents and visitors to Greater Sudbury with tourism-related information including attractions, service providers, and events. Any member of the general public, including local businesses and organizations may find this site useful.

This Map View is used to provide general public access to tourism-related information. Users can search for tourism sites, tourism service providers, and information on special events.

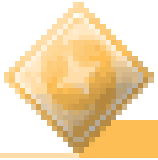


Services

Services Sudbury

Services Sudbury is another Web View available to the public through the Internet. This view has been designed to provide users with information about the services provided by the City, and other selected service providers. This can be a useful tool for any member of the general public, including local businesses and organizations.

Users can look for Services by using textual criteria such as service keyword, street name and municipal address. It is used to provide general public access to information regarding City services.



Invest Sudbury

This view has been designed with the goal of promoting Sudbury as a prosperous place to conduct business. It provides potential investors and new business operators with information about the City and its industrial/commercial opportunities. It also provides residents and visitors with a tool to search for local businesses. This Web View will be used to provide general public access to information regarding local business, and commercial/industrial land and building space opportunities.

Invest Sudbury allows users to search for locations/sites based on specific tabular criteria such as: business keyword, business name, size, industrial park, or municipal address.

Any member of the general public, including local businesses and organizations, potential investors and new business operators may have a particular interest in this Web View.



Growth

Growth Sudbury

Growth Sudbury is the final external Web View, available to the public through the Internet. This view provides users with information about current and future land development being undertaken within the City. This View is likely to be of particular interest to land developers, utility groups, and planners who are interested in gaining a broad picture of the growth trends in Sudbury.

Search Mode provides users with the ability to search for specific sites/locations based on textual criteria such as street name, zoning, and municipal address.



Sudbury View

Sudbury View

Sudbury View is the primary vehicle by which City staff will access corporate spatial data and basic GIS functionality. The view is internal to the City, with access being provided through secure employee username and password login to the City Intranet.

Sudbury View's Map Window will be configured with six Map Tabs; one for each former City department. Each Map Tab is customized with a set of default data that will be automatically displayed. From the complete list of available datasets, users can turn additional layers on or off as desired.

Member Log-In

User Name:

Password:

Clear Entries

Sign In

[Return to Previous Page](#)

Sudbury View



Sudbury View

Economic Development and Planning Services

Maps

Search

Hospitality

Find an Address

Outdoor Recreation

Events

Attractions

Streets

Zoning

Development Activity

Local Businesses

Lots and Concessions

Properties

Enter the Street number and Street Name and Click Search.

House Number

Street Name

Lookup

There were 1 address found.


Address

1. 200 BRADY STREET

Add to Map



Return To Map

LOGOUT 

Disclaimer

Sudbury View

Sudbury View

Economic Development and Planning Services

Maps

Search

LOGOUT

Disclaimer

This Map Tab is targeted to meet the business needs of Economic Development and Planning Services.

Identify - Click a feature on the map to obtain more information.

Layer Selection:

Internal Parcels

The identify return

1.

Roll Number

Street Number

Street Name

Legal 1

Legal 2

Legal 3

Legal 4

Legal 5

Owner

Internal Parcels

Zoning

Roads

Lot and Concession Points

Address Points

Proposed Lots

Development Activity

Businesses

Points of Interest

BRADY ST

MCKIM CON 3 LOT 5

RP 53R5764 PART 1 TO PART 7

INST 77353

TOM DAVIES CIVIC SQUARE COMP

3.90AC 579.56FR

GREATER SUDBURY CITY

The City of Greater Sudbury

Church of the

85

MEDINA L

Police Station

Tom Davies Square

200 BRADY STREET

BRADY STREET

Sudbury Community Arena

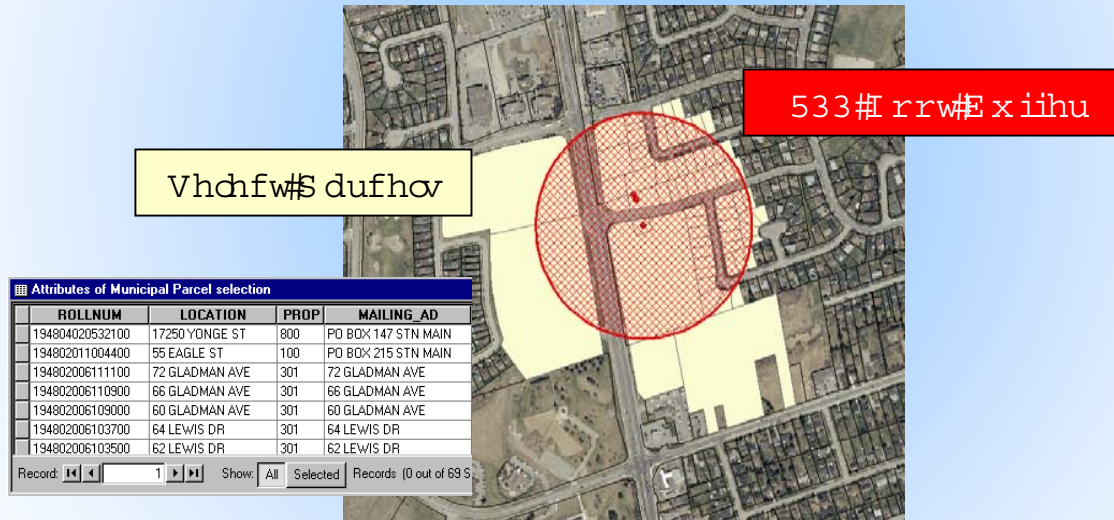
0 21m

Efficiencies

Business Process Improvement (BPI) using GIS

Example:

- Adjacent Property Mailing List Creation
- Application of Consent and Minor Variance / Permission require a 200 foot (61 m) radius around the subject property



- Applications need mailing labels and letters to recorded owners of all relevant adjacent properties
- Average of ten mailing lists per week
- 10 person-hours per week to produce
- Using a web browser form, the GIS can produce the same results within minutes

Efficiencies

Business Process Improvement (BPI) using GIS

Other Examples:

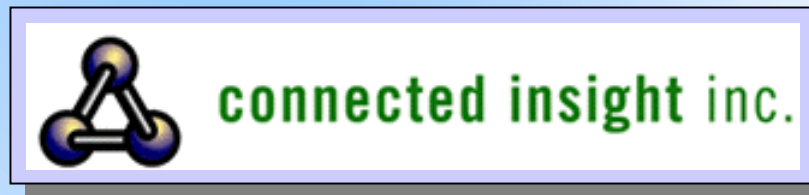
- **Street Address Zoning Designation Inquiry Process:**
- **Zoning Designation Change**
- **Spatially-Based Analysis of Census and Assessment Data**
- **Cemetery Inquiries**

Conclusion



- Project is completed and within budget
- Our Implementation / Strategic Plan will help shape the future of GIS at CGS
- Updating the GeoSmart datasets need to be performed
- Maintenance of the GIS datasets
- Finalize the implementation of the GIS Strategic Plan

Who Was Involved?



Questions ?