

Greater Sudbury Regional Eco-Industrial Networking Strategy

Final Presentation

City of Greater Sudbury Council

March 26 2008

Greater Sudbury Regional EIN Strategy

- Eco-industrial activity as an engine for economic development → sustainability as an engine
- Development of online, 'synergy finder' tool for local businesses
- Global leadership in regional eco-industrial approach



Eco-Industrial Future

- Development that features high performance, integrated, innovative, & efficient
 - Land use
 - Buildings
 - Infrastructure
 - Operations
- Strategic physical & virtual networking
 - By-product synergy; materials and energy cascading; joint procurement; coordinated utilities
- Retain, grow, and attract progressive, sustainable businesses



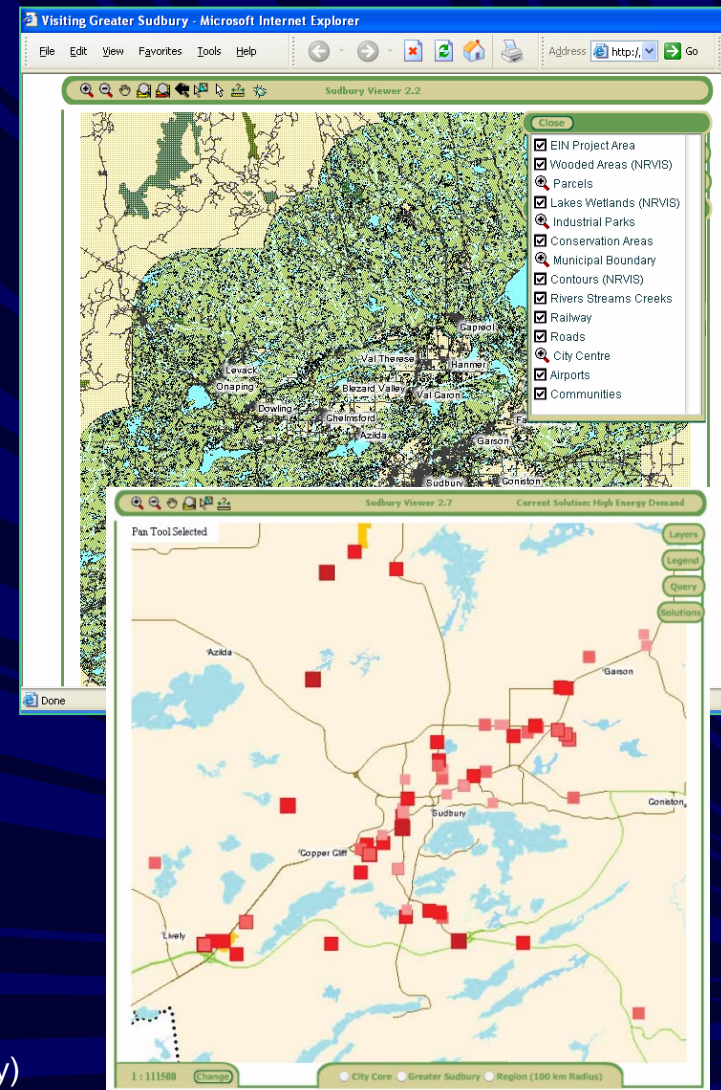
Greater Sudbury Eco-Industrial Opportunities

1. Maximize potential from Synergy Tool
2. Make Walden an *Eco-Industrial Park*
3. Create a City policy framework that encourages eco-industrial development & operations



Synergy Tool

- New software created
- Businesses will be able to
 - Find local suppliers / distributors
 - Create by-product exchanges
 - Save \$, reduce impact
- Adaptable to other municipalities and research
- Potential now for Sudbury to capitalize on joint IP
 - Partner for mgmt & further development



The Synergy Tool was developed with Geospatial Consultants (Thunder Bay)

Make Walden an EIP Sample Opportunities



Servicing plans that support green infrastructure



Energy efficiency joint building retrofit



Zoning to allow onsite energy generation



Maximize land use efficiency via infill & re-development

Why Walden?

- Progressive & active businesses that expressed support



- Diverse business base



- Green infrastructure foundation
 - Alternative stormwater management



- High profile highway location



- Potential expansion → ideal site to pilot new and 'transformation' strategies (Fielding Rd)



Creating the Walden EIP

1. Set the Policy Stage
E.g., eco-industrial design guidelines
2. Support Energy Planning and Retrofits
Energy is a key short-term issue
3. Create Infill (Re-)Development Strategies
4. Support innovation in Fleming Road servicing design and construction

Set the City Policy Stage

■ Municipalities greatly influence success by:

1. Developing policies that foster eco-industrial development
2. Partnering on pilot projects
3. Modifying standards to support green infrastructure
4. Encouraging innovative and progressive or green business practices

Set the Policy Stage

- For Walden... and beyond
- Send signal to the private sector
- Co-ordinate and integrate departmental efforts to maximize benefits



Flexible & Practical Implementation

- Based on capacity of staff and business community to act
- Based on realities of other private and public sector project timing
- Short term quick wins build momentum
- Dynamic strategy that can evolve as new partners come on board



Time

PRELIMINARY

- Scoping studies
- Data collection
- Simple policy directives

MID – FULL SCALE PROJECTS

- Feasibility studies
- Consultation
- Policy approvals and implementation

Conclusion

The Greater Sudbury Regional EIN Strategy:

- Provides a progressive framework to catapult the City ahead
- Delivers a software tool to facilitate eco-industrial synergies
 - & engage community and business partners
- Demonstrates leadership in addressing sustainability regionally

