

City of Greater Sudbury Sign By-Law 2007





INTRODUCTION

- July 11, 2007 Priorities Committee approved staff recommendations
- 3 recommendations dealt with temporary sign provisions
- Temporary signs include Portable, Banner and Poster signs
- Staff directed to draft by-law



PORTABLE SIGNS

- Existing provisions to be carried forward to new sign by-law
- Provisions will be administered throughout City of Greater Sudbury
- New provisions to be introduced
- Permit required



PORTABLE SIGNS

- Larger properties may obtain additional permits
- Height restriction of 2.5 m
- Permit to run consecutively for 6 months for smaller properties
- Restrictive anchoring systems
- Size, location, and time of operation restrictions for “sidewalk” signs



BANNERS

- Temporary banner signs to be addressed
- Banners only allowed to promote “special events”
- Time restrictions on banners - maximum of 30 days - twice in a calendar year



BANNERS

- Allowed only on exterior wall of buildings
- Maximum size of 6 m²
- Non-illuminated
- No permit required



POSTERS

- Poster signs may only be allowed on “designated poles”
- Maximum size of 18” horizontal width x 24” vertical height
- Maximum height of 2.2 m from grade



POSTERS

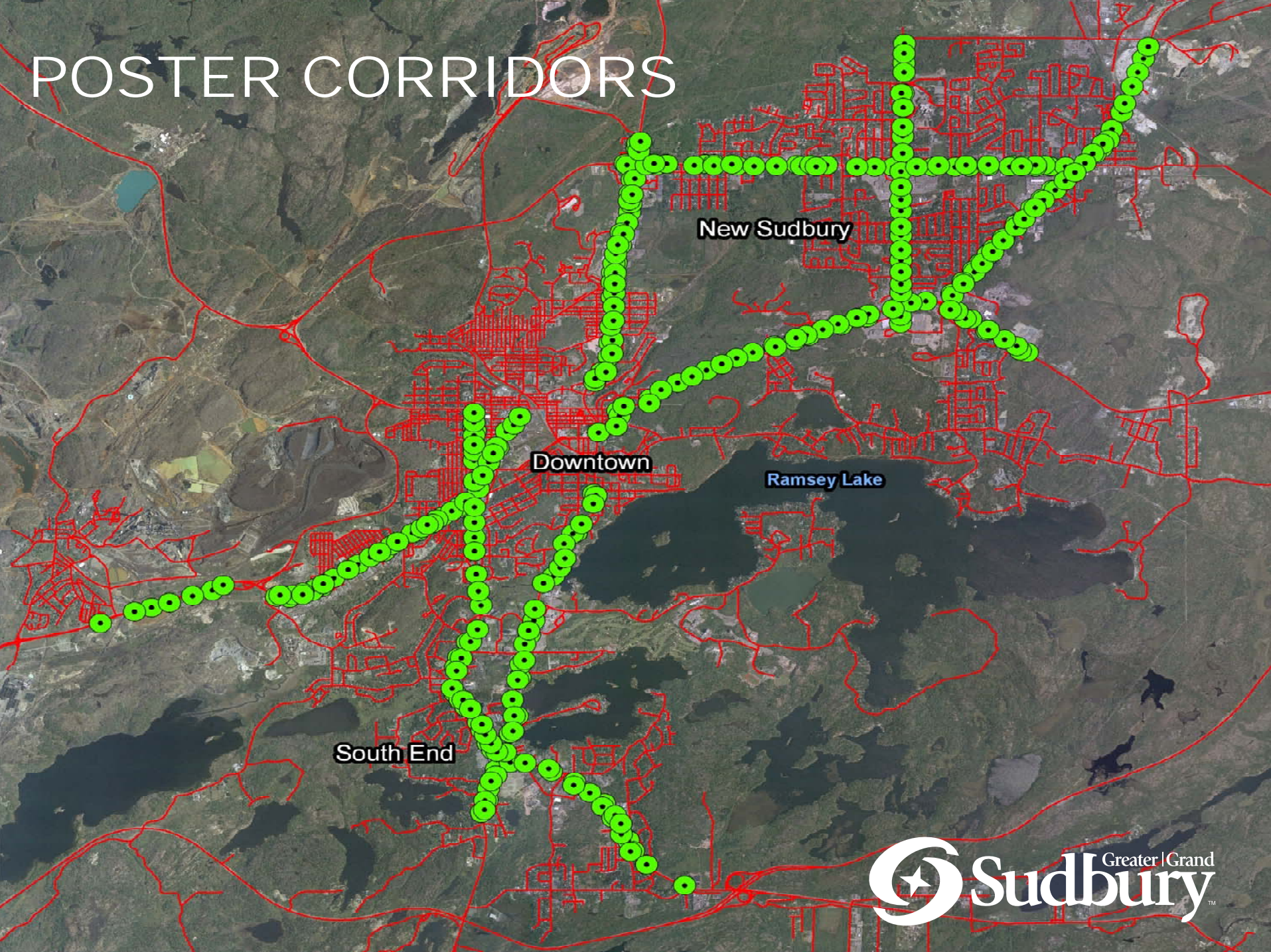
- Nylon strap, plastic or twine to be used to attach poster
- Maximum of 1 poster per designated pole
- Erected no sooner than 14 days prior to event or announcement
- Must be removed within 48 hours after event or announcement



POSTERS

- Non-profit and charitable organizations will be allowed to use poster signs for a maximum of 60 consecutive days
- Owner of poster is responsible for removal of poster sign
- Permit required

POSTER CORRIDORS



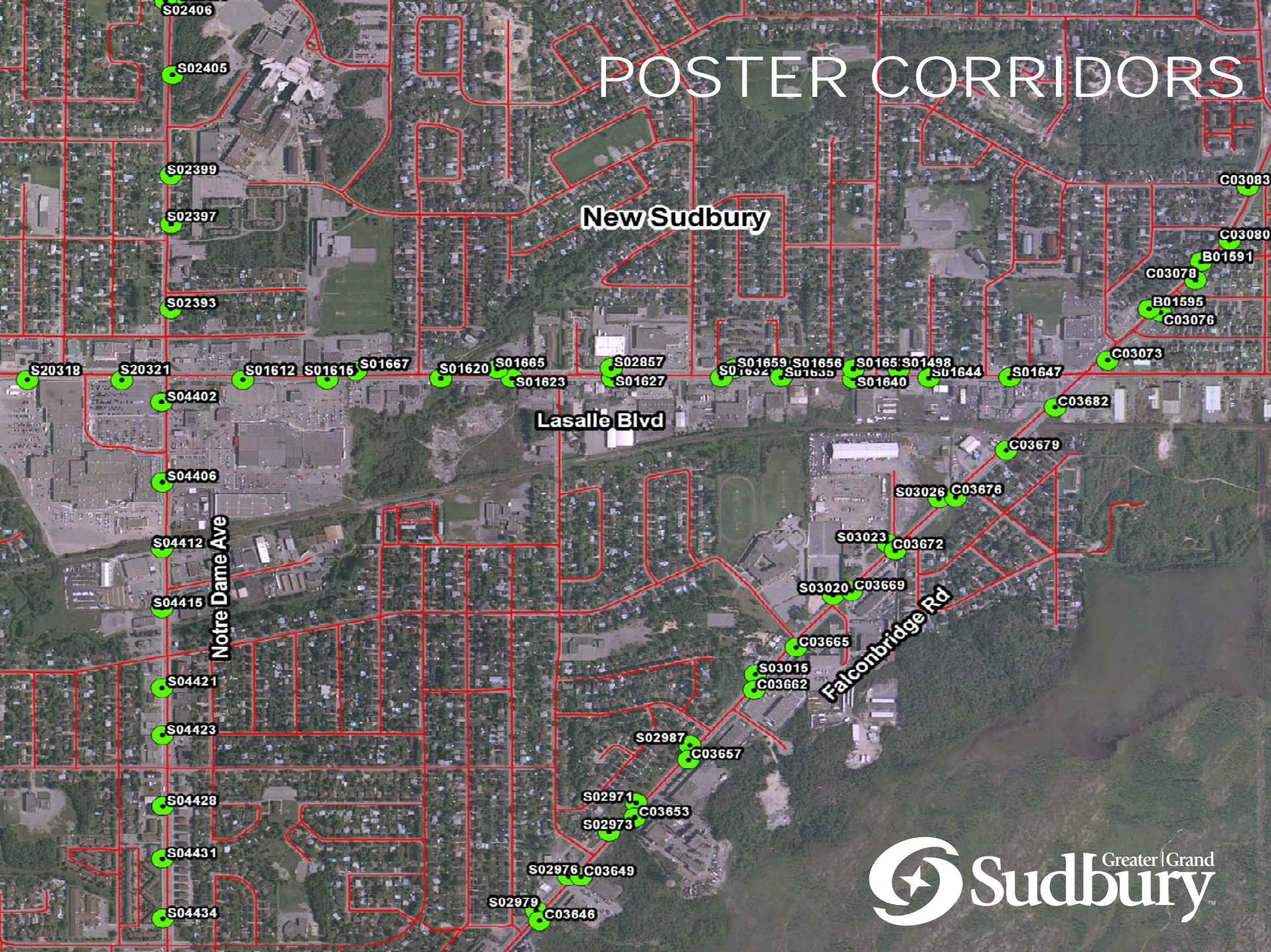
New Sudbury

Downtown

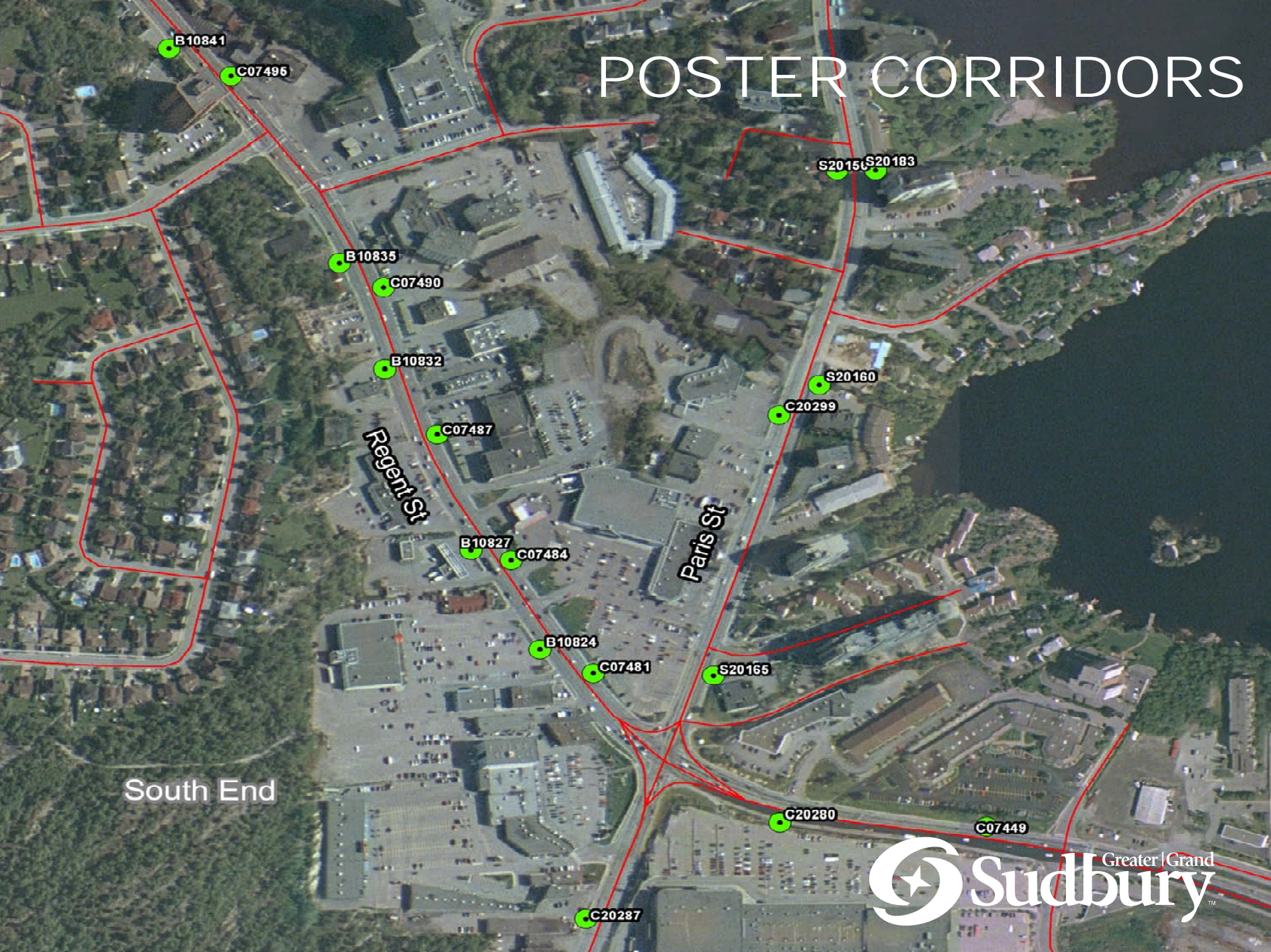
Ramsey Lake

South End

POSTER CORRIDORS

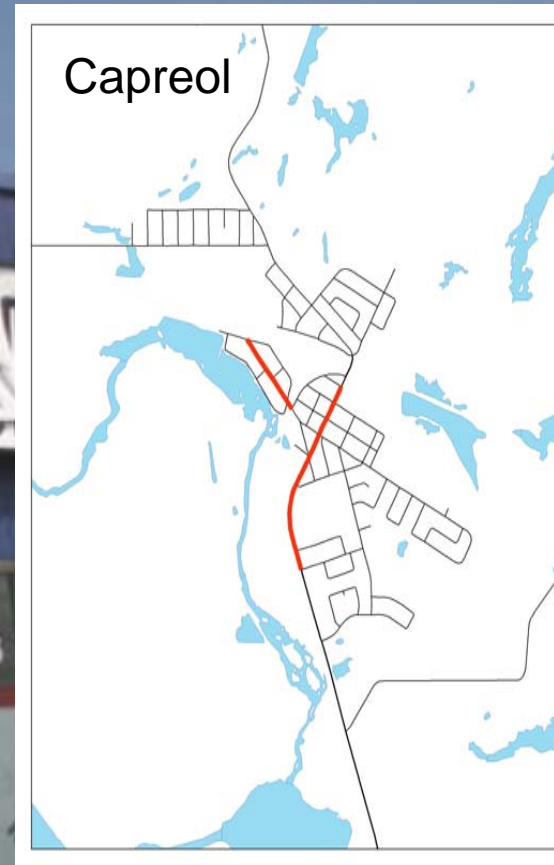
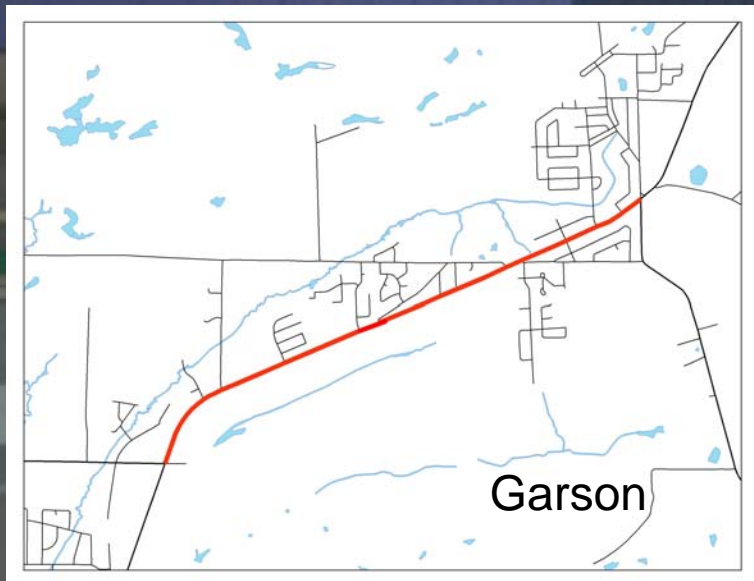
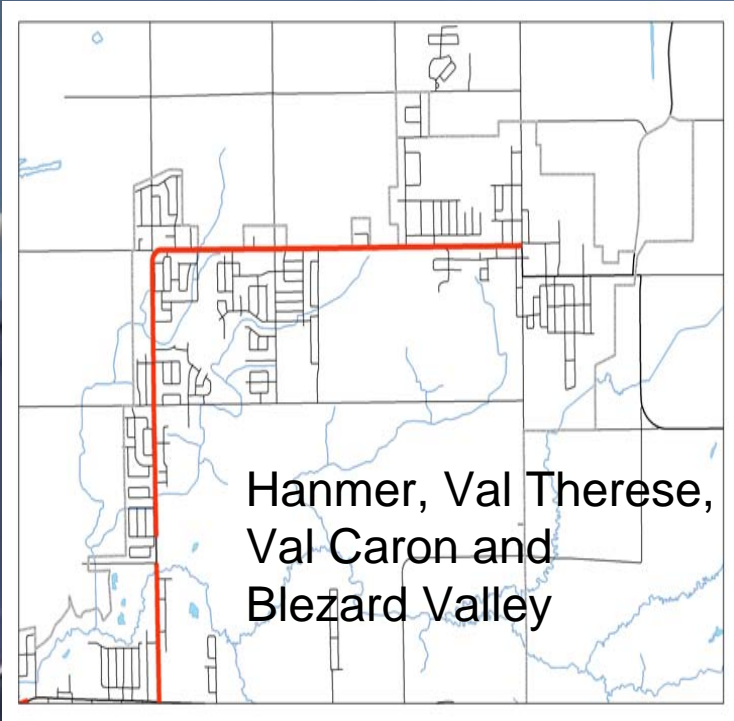


POSTER CORRIDORS

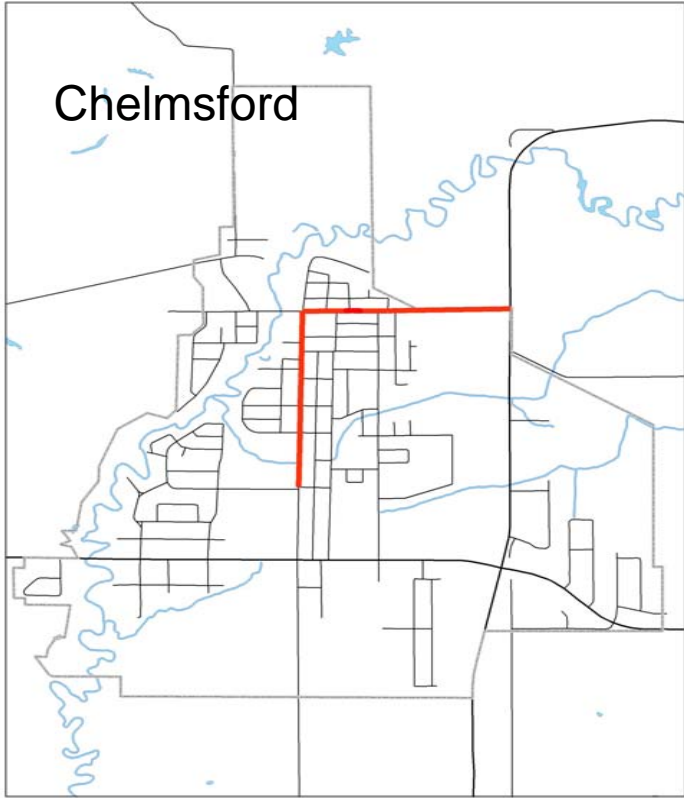


South End

POSTER CORRIDORS

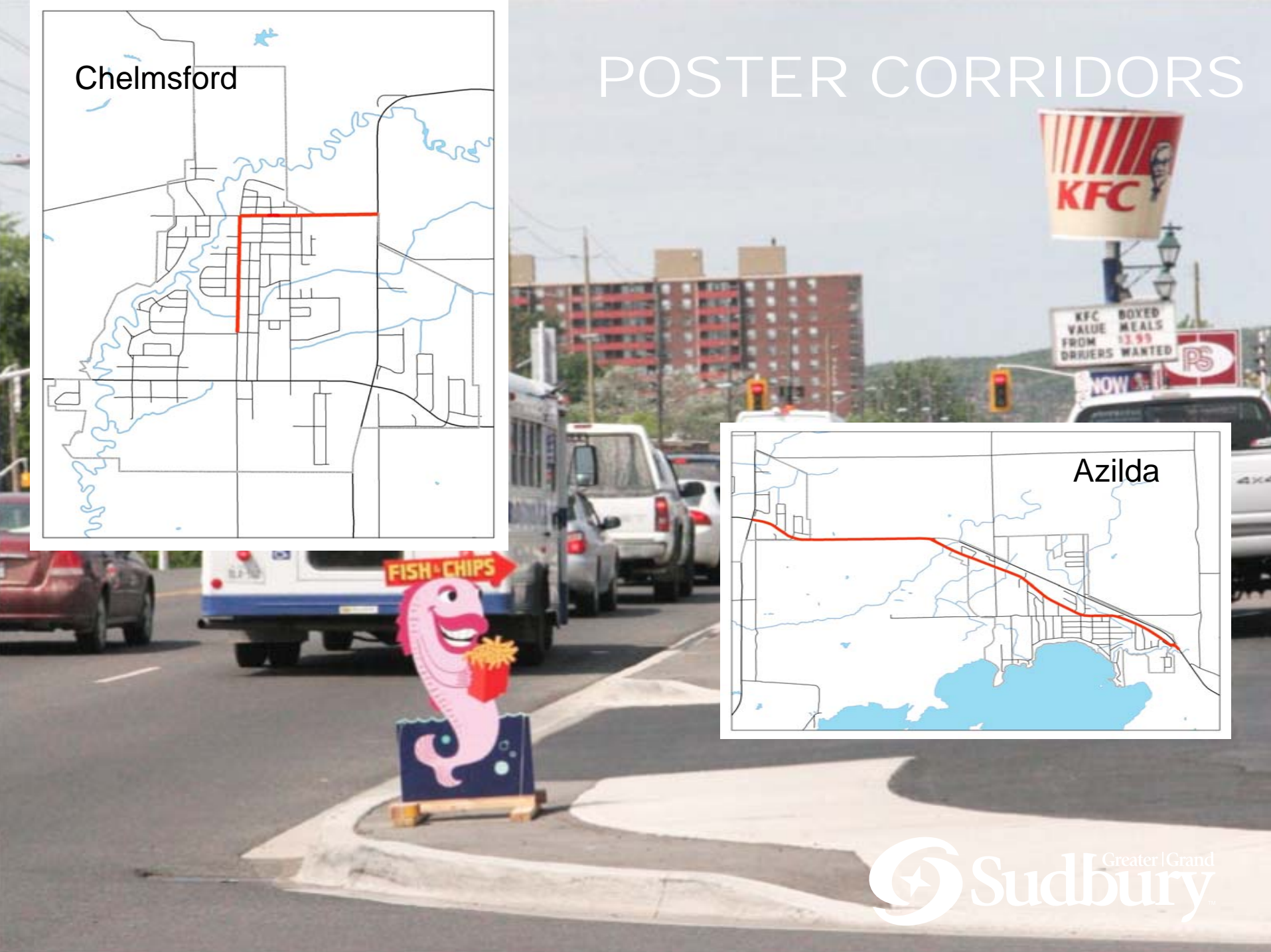


Chelmsford



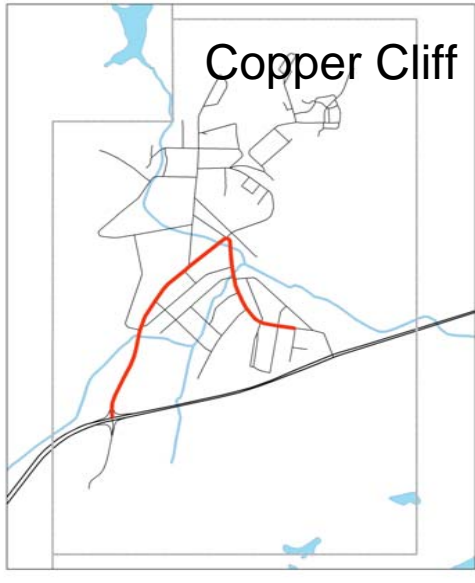
POSTER CORRIDORS

Azilda



POSTER CORRIDORS

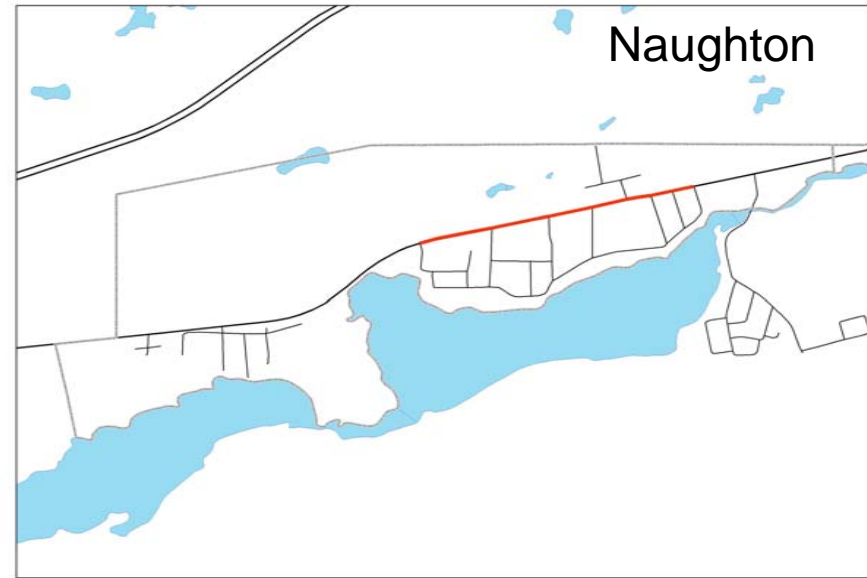
Copper Cliff



Lively



Naughton





EDUCATION

- Sign By-law implementation date January 1, 2008
- Staff to inform and educate sign companies and owners of new regulations
- Compliance with new Sign By-law will be enforced by staff

QUESTIONS ?

