

# PLANNING, PRELIMINARY DESIGN AND ENVIRONMENTAL ASSESSMENT STUDY

Highway 17 Sudbury Southwest By-Pass Four-Laning

From Sudbury Municipal Road 55 (middle Junction) easterly to Highway 69 for 13.3 km

GWP 5825-05-00

Presentation to City of Greater Sudbury Council

February 27, 2008

One Team. Infinite Solutions.



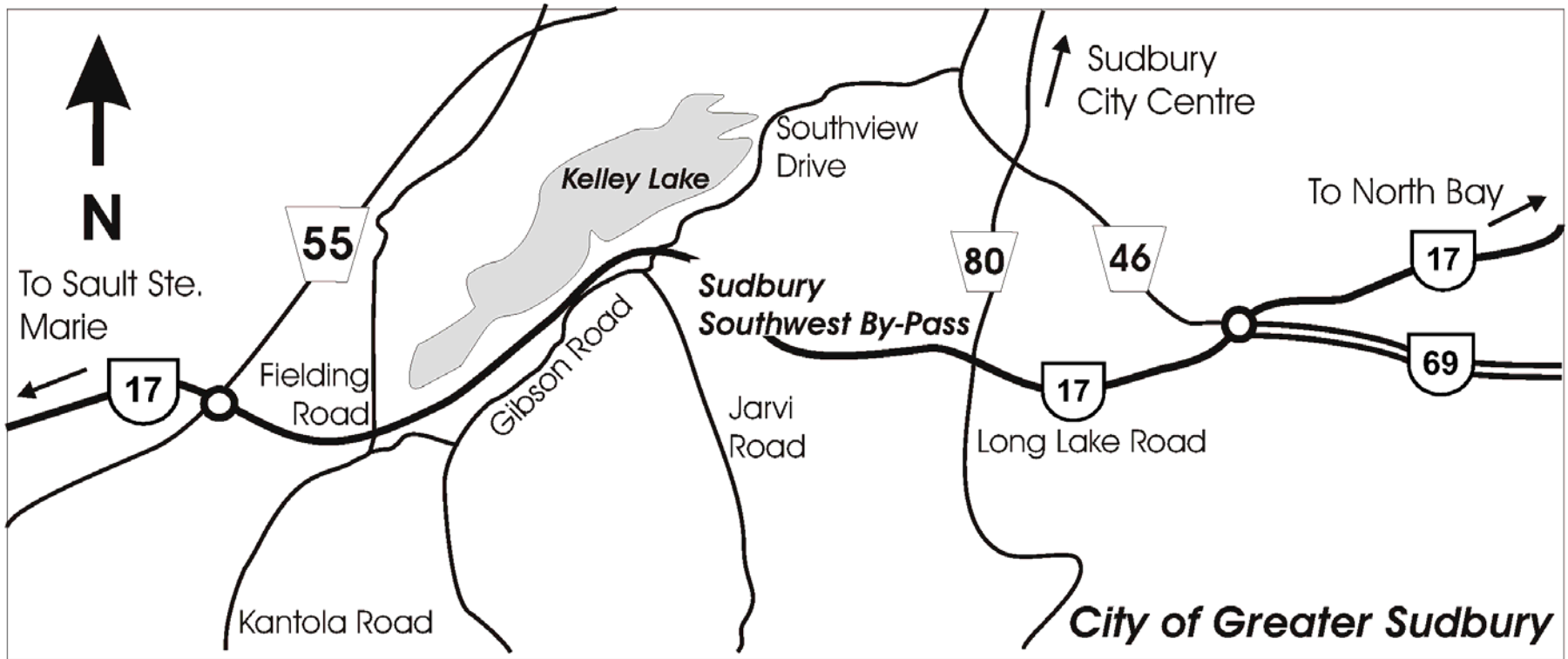
Ministry of  
Transportation

# Study Area Plan

Highway 17 Sudbury Southwest By-Pass Four-Laning

From Sudbury Municipal Road 55 (middle Junction) easterly to Highway 69 for 13.3 km

GWP 5825-05-00



## Study Purpose

Highway 17 Sudbury Southwest By-Pass Four-Laning

From Sudbury Municipal Road 55 (middle Junction) easterly to Highway 69 for 13.3 km

GWP 5825-05-00

The purpose of this study is to identify a four-lane highway plan for the Sudbury Southwest By-Pass (Highway 17), with access restricted to interchange locations only. A four-lane, access controlled highway will improve traffic safety and operations on this section of Highway 17.

# Public Consultation

Highway 17 Sudbury Southwest By-Pass Four-Laning

From Sudbury Municipal Road 55 (middle Junction) easterly to Highway 69 for 13.3 km

GWP 5825-05-00

- Notice of Study Commencement – June 2006
- Public Information Centre 1 – October 3, 2006
  - Present and seek input on interchange locations and configurations
- Public Information Centre 2 – March 8, 2007
  - Present and seek input on two alternatives
- Public Information Centre 3 – February 28, 2008
  - Present and seek input on the Preferred Plan
- *Planning, Preliminary Design, and Environmental Assessment Report* – Fall, 2008
  - 30-day public review period

# Background

Highway 17 Sudbury Southwest By-Pass Four-Laning

From Sudbury Municipal Road 55 (middle Junction) easterly to Highway 69 for 13.3 km

GWP 5825-05-00

- At PIC 2 on March 8, 2007 two alternatives were presented
- Alternative 1:
  - Full interchange at Southview Drive
  - Grade-separated crossing at Fielding Road
  - Service Road: Kantola to Southview Drive
  - Service Road: Southview to Hannah Lake and Middle Lake Roads
- Alternative 2:
  - Full interchange at Fielding Road
  - Grade-separated crossing at Southview Drive
  - Service Road: Kantola to Southview Drive
  - Service Road: Treeview to Middle and Hannah Lake Roads

# Traffic Study & Business Survey

Highway 17 Sudbury Southwest By-Pass Four-Laning

From Sudbury Municipal Road 55 (middle Junction) easterly to Highway 69 for 13.3 km

GWP 5825-05-00

- Origin-Destination Traffic Survey (six hour period)
  - Between Kantola and SMR 24 (Lively) 26 = 25
  - Between Kantola and Southview = 140
  - Between Fielding and Southview = 25
  - Between Kantola and Fielding = 95
- Fielding Road Business Survey
  - Need access without undue out-of-way travel
  - Many shipments oriented to and from southern Ontario
  - Existing problems at intersection of Fielding Road and Highway 17
  - Use both accesses (Fielding at Highway 17 and Fielding at SMR 55)

# Evaluation of Alternatives

Highway 17 Sudbury Southwest By-Pass Four-Laning

From Sudbury Municipal Road 55 (middle Junction) easterly to Highway 69 for 13.3 km

GWP 5825-05-00

- Comprehensive Evaluation Included:
  - Environment 30%
  - Traffic Operations 25%
  - Access 20%
  - Property and Land Use 15%
  - Constructability 5%
  - Cost 5%
- Alternative 1 was the highest scoring plan in each category
- Preferred Plan was selected based on:
  - results of the evaluation process
  - consideration of comments/input received

## Preferred Plan

Highway 17 Sudbury Southwest By-Pass Four-Laning

From Sudbury Municipal Road 55 (middle Junction) easterly to Highway 69 for 13.3 km

GWP 5825-05-00

- Four-lane Highway 17
- Full interchange at Southview Drive (diamond configuration)
- Grade-separated crossing at Fielding Road
- Service Road between Fielding Road and Southview Drive
- Service Road from Southview Drive to Hannah Lake Road and Middle Lake Road

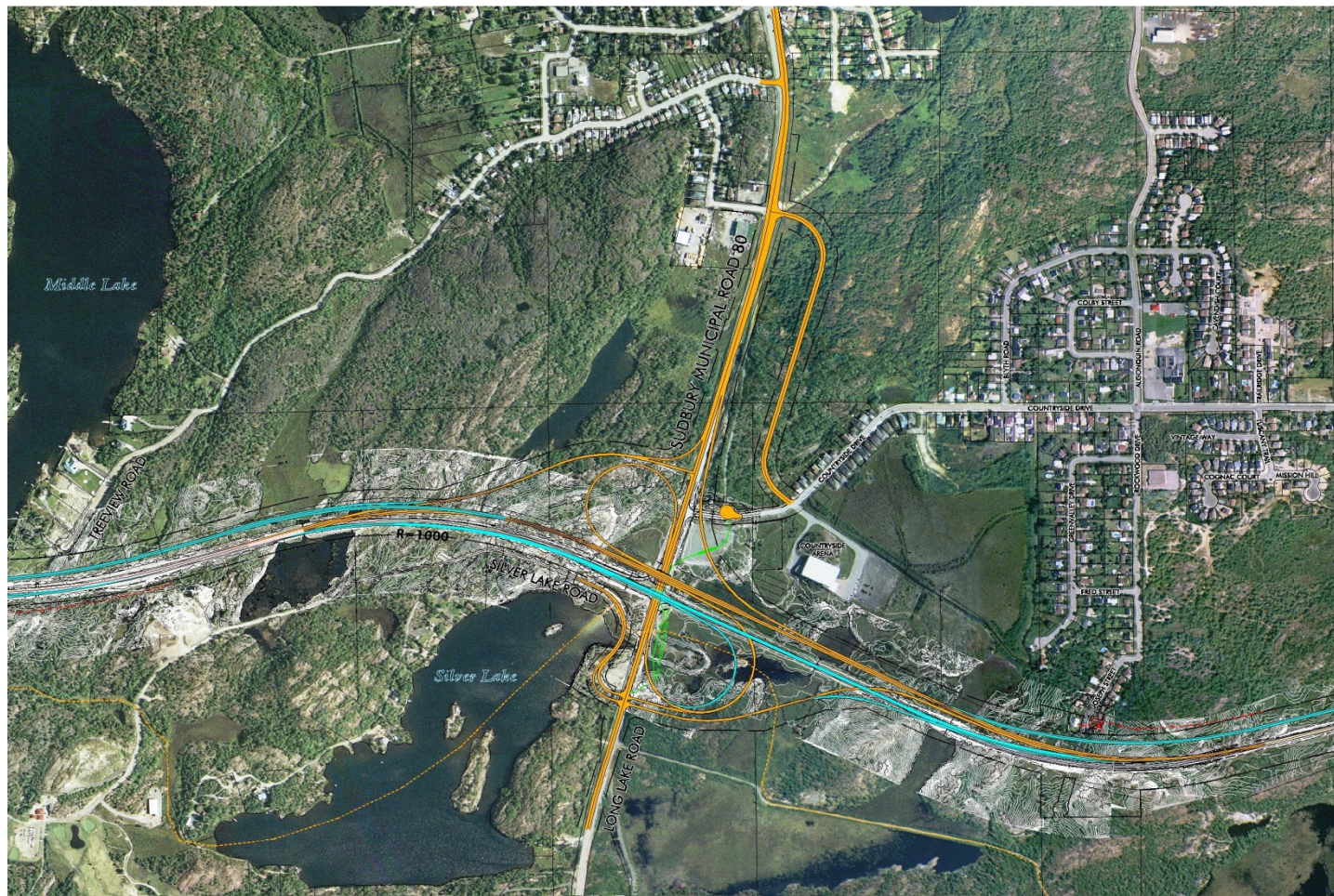


# Sudbury Municipal Road 80 Interchange

Highway 17 Sudbury Southwest By-Pass Four-Laning

From Sudbury Municipal Road 55 (middle Junction) easterly to Highway 69 for 13.3 km

GWP 5825-05-00



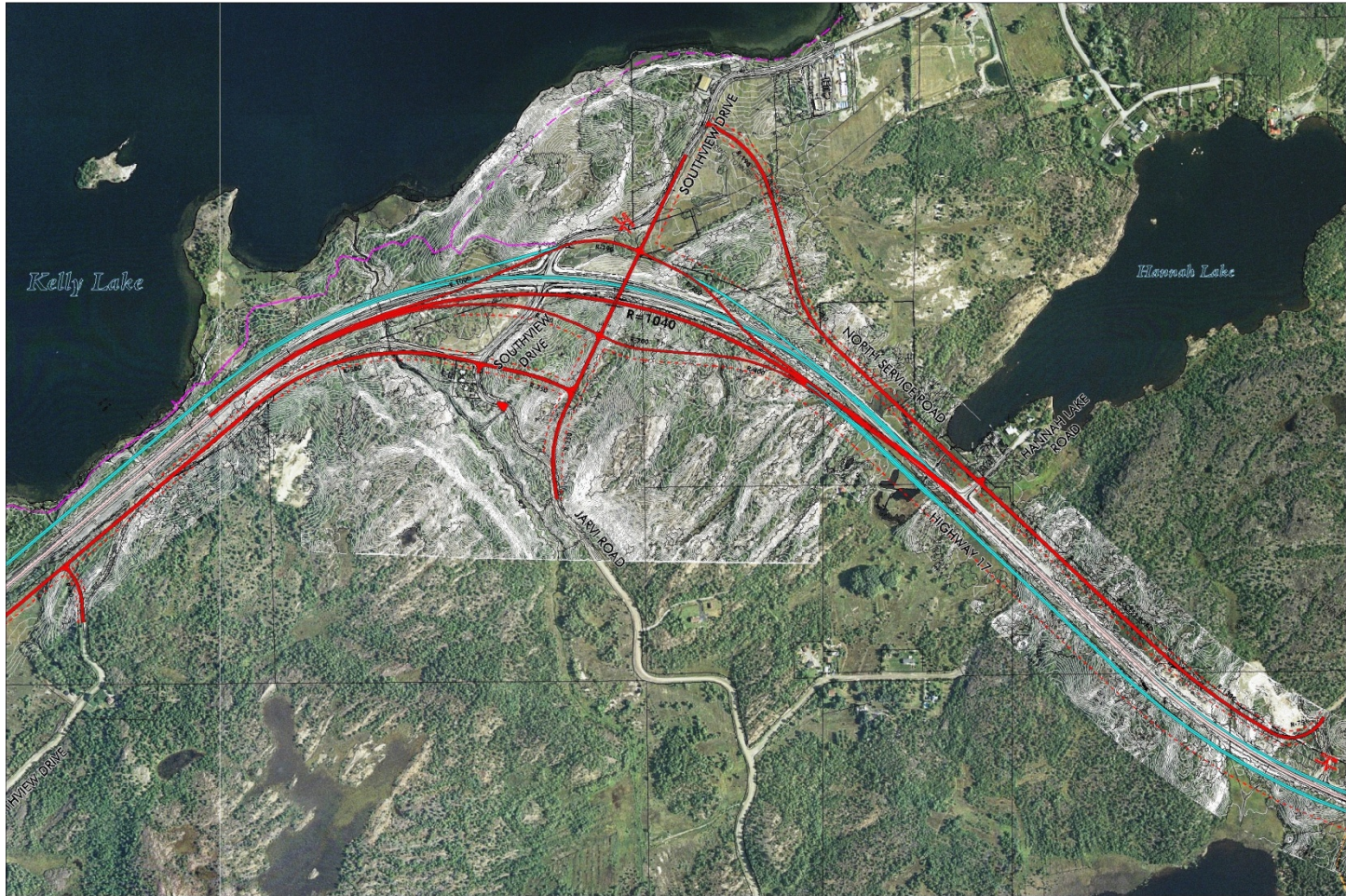


# Southview Drive Interchange

Highway 17 Sudbury Southwest By-Pass Four-Laning

From Sudbury Municipal Road 55 (middle Junction) easterly to Highway 69 for 13.3 km

GWP 5825-05-00



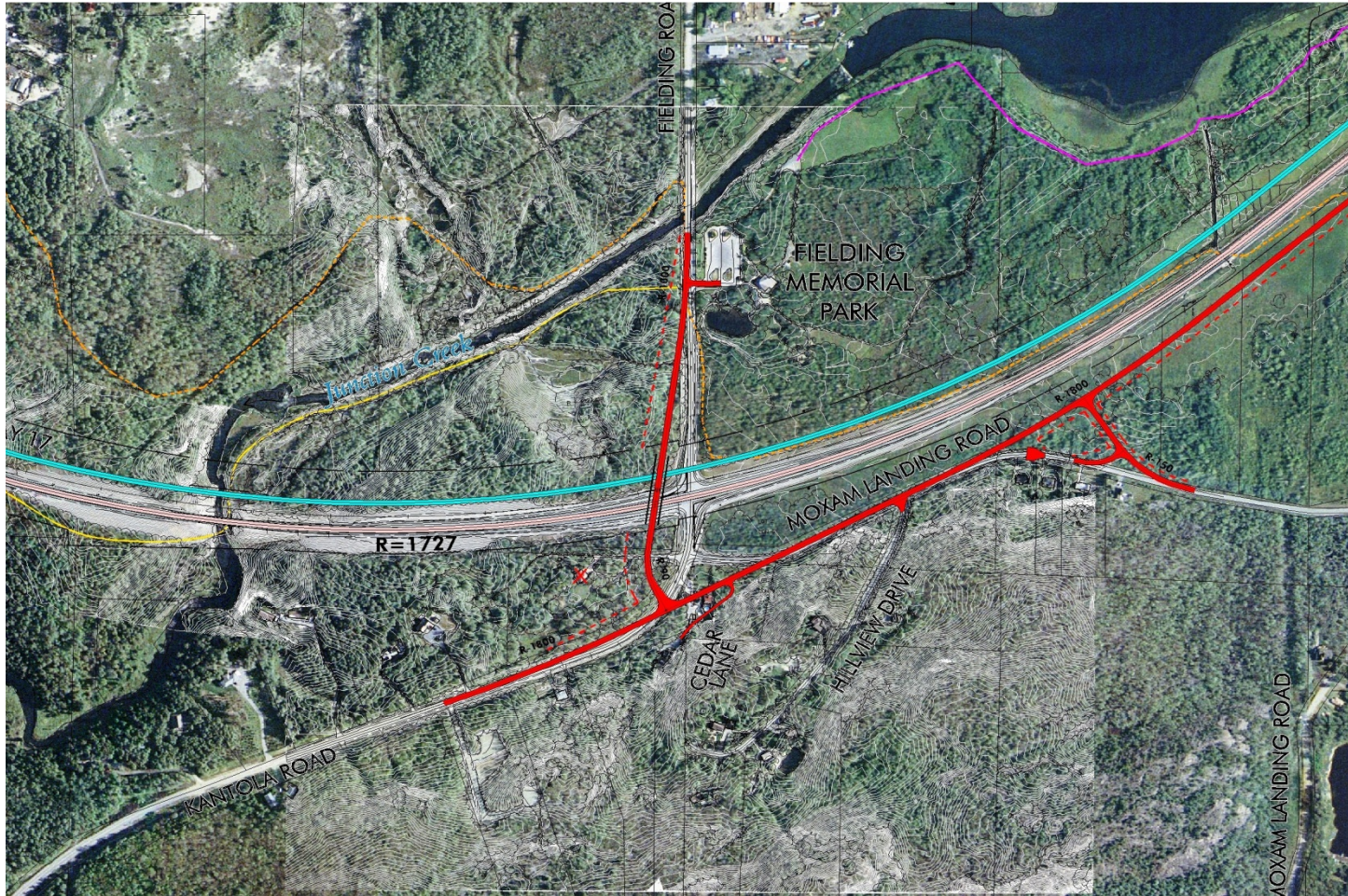


# Fielding Road / Kantola Road Bridge Crossing

Highway 17 Sudbury Southwest By-Pass Four-Laning

From Sudbury Municipal Road 55 (middle Junction) easterly to Highway 69 for 13.3 km

GWP 5825-05-00



# Why an Interchange at Southview Drive?

Highway 17 Sudbury Southwest By-Pass Four-Laning

From Sudbury Municipal Road 55 (middle Junction) easterly to Highway 69 for 13.3 km

GWP 5825-05-00

- Provides desirable spacing between interchanges
- Provides direct access to Southview Drive and the Sudbury City Centre
- Provides access between Hannah Lake and Middle Lake Roads and the interchange
- Provides reasonable access to Fielding and Kantola Roads
- Accommodates snowmobile crossing of the highway
- No significant impacts to Fielding Memorial Park

# Why **NOT** an Interchange at Fielding / Kantola?

Highway 17 Sudbury Southwest By-Pass Four-Laning

From Sudbury Municipal Road 55 (middle Junction) easterly to Highway 69 for 13.3 km

GWP 5825-05-00

- Does not achieve the desirable spacing between interchanges
- Does not provide access at Southview Drive
- Convenient access to Fielding Road already exists at SMR 55
- Requires a new crossing of Junction Creek
- Requires the widening of the existing Junction Creek structure
- Requires the relocation of the entrance to Fielding Memorial Park and reconstruction of the parking area
- Impacts Fielding Memorial Park: interchange ramps, snowmobile trail



## Next Steps

Highway 17 Sudbury Southwest By-Pass Four-Laning

From Sudbury Municipal Road 55 (middle Junction) easterly to Highway 69 for 13.3 km

GWP 5825-05-00

- Review input received from PIC 3
- Consider plan refinements and confirm Recommended Plan
- Prepare report
- File report for public review period to receive environmental clearance for project
- MTO can schedule detail design when environmental clearance is received

# **PLANNING, PRELIMINARY DESIGN AND ENVIRONMENTAL ASSESSMENT STUDY**

Highway 17 Sudbury Southwest By-Pass Four-Laning

From Sudbury Municipal Road 55 (middle Junction) easterly to Highway 69 for 13.3 km

GWP 5825-05-00

February 27, 2008

One Team. Infinite Solutions.



Ministry of  
Transportation